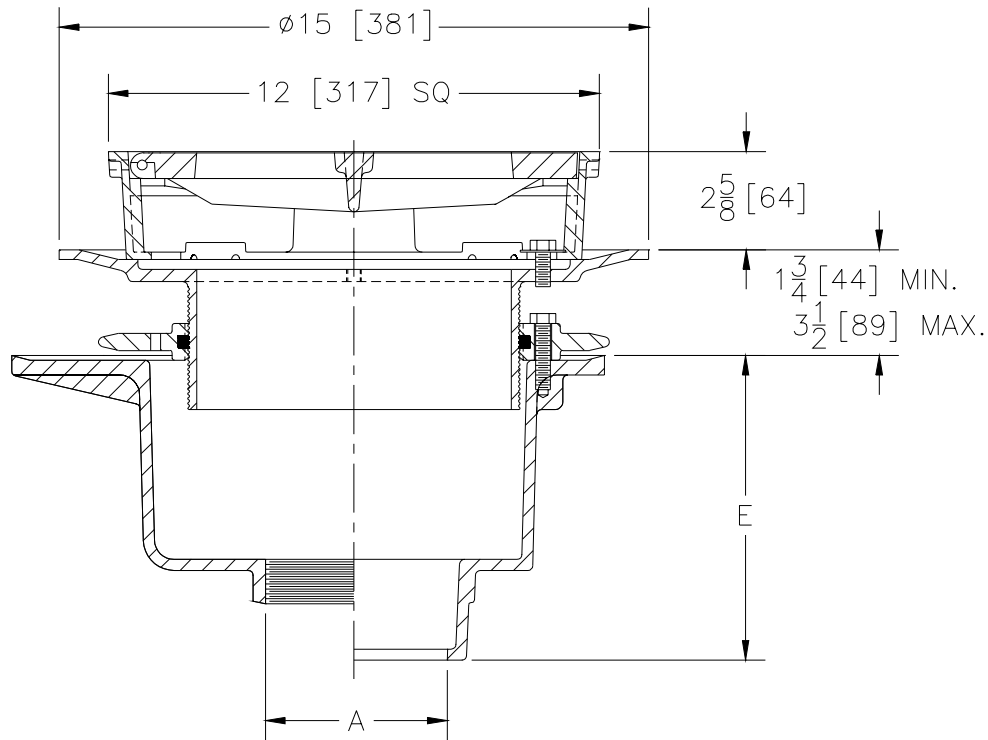




Z-512-77
12" HEAVY DUTY DRAIN W/ ADJUSTABLE
EXTENSION AND SQUARE TOP

TAG _____

Dimensions Subject to Manufacturing Tolerances



A Pipe Size In.	Approx. Wt. Lbs.	Grate Open Area Sq. In.
3,4[50,75]	44[21]	30[194]

ENGINEERING SPECIFICATION: ZURN Z-512-77 12" Square top heavy duty drain, Dura-Coated cast iron deep sump body with bottom outlet, adjustable extension, collar with "O" ring, seepage pan and combination flashing clamp and square frame with heavy duty grate.

OPTIONS (Check/specify appropriate options)

OUTLET (Specify type)

- _____ **IC** Inside Caulk
- _____ **IG** IC w/Sealtrol Gskt.
- _____ **IP** Threaded
- _____ **IP** Threaded
- _____ **NL** Neo-Loc

PIPE SIZE (Specify size)

- _____ 3",4"
- _____ 3",4"
- _____ 3"
- _____ 4"
- _____ 3",4"

'E' BODY HT. DIMENSION

- 7-3/4"
- 7-3/4"
- 6"
- 6-1/4"
- 7-3/8"

PREFIXES

- _____ **Z-** D.C.C.I. Body and Grate*
- _____ **ZN-** D.C.C.I. Body with Polished Bronze Grate (Add 3/16" to 2-1/8" Dim.)
- _____ **ZB-** D.C.C.I. Body with Polished Nickel Bronze Grate (Add 3/16" to 2-1/8" Dim.)

SUFFIXES

- _____ **-DG** Duresist Grate
- _____ **-G** Galvanized Cast Iron
- _____ **-S** Secondary Strainer
- _____ **-V** Back Water Valve
- _____ **-VP** Vandal Proof Secured Top
- _____ **-90** 90° Side Outlet

REV.	DATE: 05/1/97	C.N. NO. 77825
DWG. NO. P-14468 PRODUCT NO. Z-512-77		

*REGULARLY FURNISHED UNLESS OTHERWISE SPECIFIED