

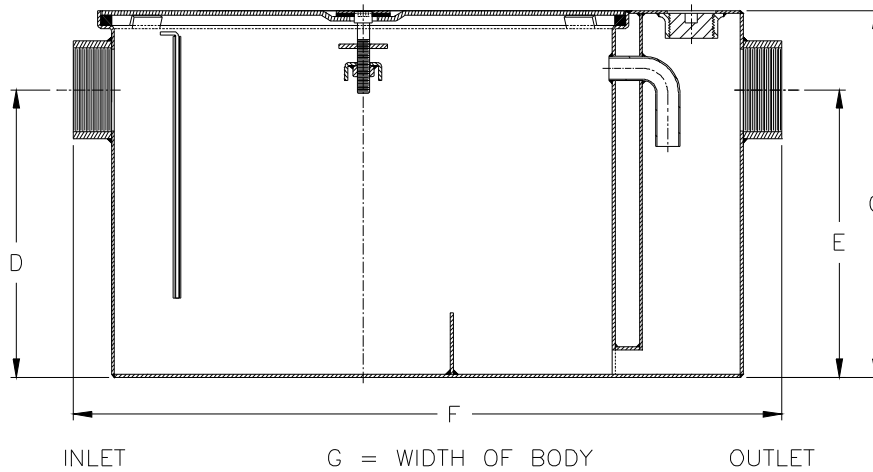


Z1170-139
SIZE 800 GREASE INTERCEPTOR
W/ 4" INLET AND OUTLET

SPECIFICATION SHEET

TAG _____

Dimensional Data (inches and [mm]) are Subject to Manufacturing Tolerances and Change Without Notice



NOTE: Interceptor is not PDI approved.

Size	Inlet/ Outlet Size*	Flow Rate G.P.M. [L]	Capacity		Approx. Wt. Lbs. [kg]	Dimensions in Inches			
			Water Gal. [L]	Grease Lbs. [kg]		C	D/E	F	G
800	4 [102]	50 [189]	40 [151]	100 [45]	180 [82]	21-1/2 [546]	16-1/2 [419]	36 [914]	24-1/2 [622]

ENGINEERING SPECIFICATION: ZURN Z1170-139

Acid Resistant Coated interior and exterior fabricated steel grease interceptor, PDI, rated at 50 GPM and 100 Lbs. grease capacity, with internal air relief by-pass, bronze cleanout plug, removable pressure equalizing/flow diffusing inlet baffle, fixed bottom outlet baffle, and visible double wall trap seal. Gasketed non-skid secured cover complete with center tie down assembly, with Z1108 flow control fitting. Regularly furnished with a high inlet and outlet connection. Note: Location of outlet from bottom of interceptor cannot be changed.

PREFIXES

- _____ Z Acid Resistant Coated Fabricated Steel*
- _____ ZS All Type 304 Fabricated Stainless Steel

SUFFIXES

- _____ -AL Aluminum Cover
- _____ -DI Dual High/Low Inlet.
- _____ -E Acid Resistant Coated Interior and exterior fabricated steel extension section. (Specify 'C' Dim. required) for recessed installation.
- _____ -HD Heavy Duty Cover rated at 10,000 lbs. maximum safe live load. A 3 [76] minimum extension height is required when Heavy Duty Cover (-HD) option is specified.
- _____ -K Anchor flange 1-3/4 [44] down from top and 2 [51] wide. A 3 [76] minimum extension height is required when anchor flange (-K) option is specified.
- _____ -KC Anchor flange 1-3/4 [44] down from top and 2 [51] wide with clamp collar. A 3 [76] minimum extension height is required when anchor flange (-K) option is specified.
- _____ -L Angle type (Z1108-L) flow control device with plunger.
- _____ -R Acid resistant coated interior and exterior fabricated steel recessing receiver for recessed installation is equipped with adjustable support brackets and gasketed non-skid cover with covered recessed lift handle.
- _____ -RE Acid resistant coated interior and exterior fabricated steel recessing receiver enclosed type for recessed installation. Furnished with adjustable support brackets and gasketed non-skid cover with covered recessed lift handle.
- _____ -T Cover recessed for tile/terrazzo. A 3 [76] minimum extension height is required. (Specify recess depth - 1/8 [3], 3/4 [19], or 1-1/4 [32]).

* Regularly furnished unless otherwise specified.