



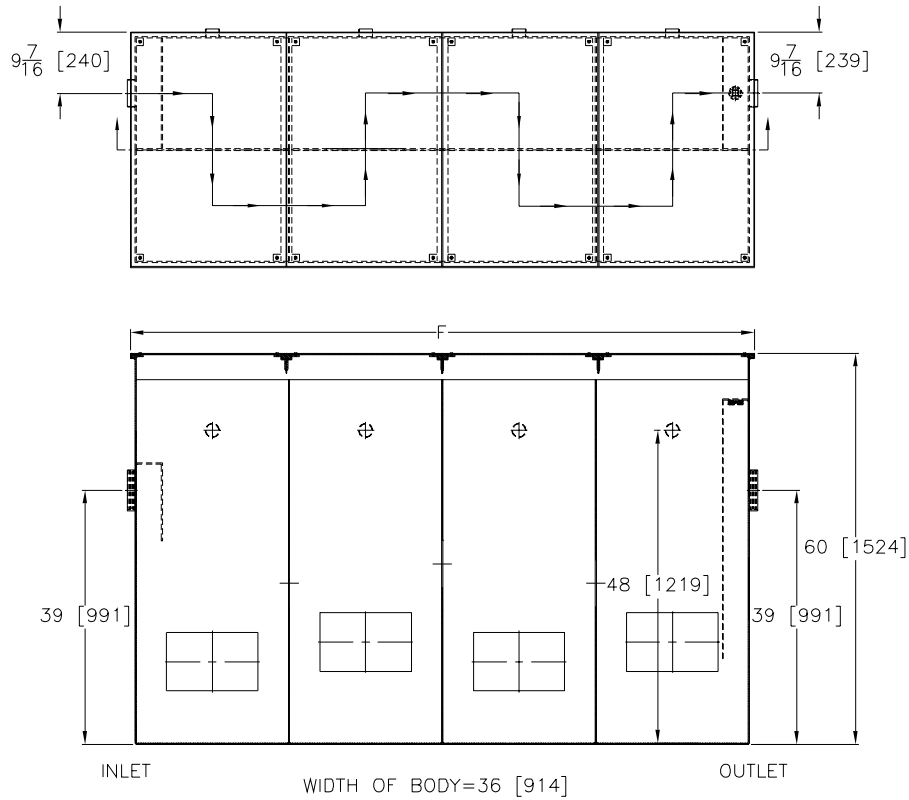
# Z1187-85

## SAND AND SEDIMENT INTERCEPTOR W/ 6 [152] INLET AND OUTLET

SPECIFICATION SHEET

TAG \_\_\_\_\_

Dimensional Data (inches and [ mm ]) are Subject to Manufacturing Tolerances and Change Without Notice



Size	Cubic Ft. [cm]	Approx. Wt.Lbs. [kg]	F-Dim in Inches
300	43 [1.2]	1600 [726]	60 [1524]
400	54 [1.5]	1750 [794]	72 [1829]
500	72 [2]	2100 [953]	96 [2438]
600	81 [2.3]	2500 [1135]	108 [2743]
700	90 [2.5]	2700 [1226]	120 [3048]
800	108 [3]	3000 [1362]	144 [3658]
1000	135 [3.8]	3640 [1652]	180 [4572]

**ENGINEERING SPECIFICATION ZURN Z1187-85**

Acid Resistant Coated fabricated steel sand and sediment separator, \_\_\_cu. ft. capacity below invert of outlet, 6 [152] threaded inlet and outlet, four 2 [51] threaded individual vent connections, complete with heavy duty scoriated non-skid gasketed removable cover(s).

**OPTIONS** (Check/specify appropriate options)

**PREFIXES**

\_\_\_ Z Acid Resistant Coated Fabricated Steel\*

**SUFFIXES**

- \_\_\_ -E Integral extension assembly for recessed installation (Specify overall height required)
- \_\_\_ -K Anchor flange 1 3/4 [44] down from top and 2 [51] wide.  
No extension required to accommodate -K option.
- \_\_\_ -HD Extra heavy-duty reinforced cover for vehicular traffic.  
(Specify working load requirements)

\*REGULARLY FURNISHED UNLESS OTHERWISE SPECIFIED

REV.	DATE: 10/13/06	C.N. NO. 95733
DWG. NO. P-15340	PRODUCT NO. Z1187-85	