

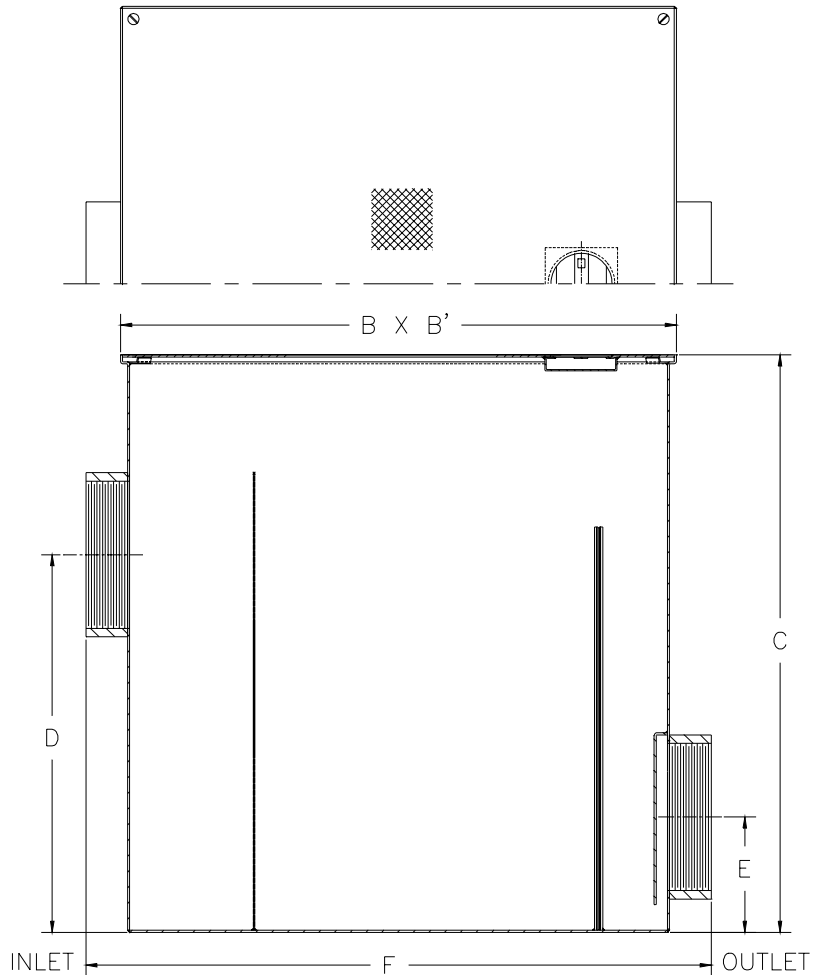


Z-1185-81 LINT INTERCEPTOR

SPECIFICATION SHEET

TAG _____

Dimensional Data (inches and [mm]) are Subject to Manufacturing Tolerances and Change Without Notice



| Size No. of Machines | Inlet/Outlet Size** | Flow Rate G.P.M. [L] | Approx. Wt. Lbs. [kg] | Dimensions In Inches | | | | | |
|----------------------------|------------------------|----------------------------|-----------------------------|----------------------|----------|----------|----------|--------------|--------------|
| | | | | B | B' | C | D | E | F |
| 7 | 6 [150] | 70 [265] | 155 [70] | 25 [635] | 25 [635] | 26 [660] | 17 [432] | 5 3/16 [132] | 28 1/8 [714] |

ENGINEERING SPECIFICATION: ZURN Z-1185-81 Acid Resistant Coated interior and exterior fabricated steel lint interceptor, non-skid secured cover, with stainless lint intercepting secondary screen assembly and permanent primary straining baffle. Regularly furnished with high inlet and low outlet.

OPTIONS (Check/specify appropriate options)

PREFIXES

___ Z- Acid Resistant Coated Fabricated Steel*

SUFFIXES

___ RS- Stainless Steel Screen Replacement Assembly

| | | |
|---|----------------------|-----------------------|
| REV. | DATE: 11/4/98 | C.N. NO. 81531 |
| DWG. NO. P-14679 PRODUCT NO. Z-1185-81 | | |

*REGULARLY FURNISHED UNLESS OTHERWISE SPECIFIED