



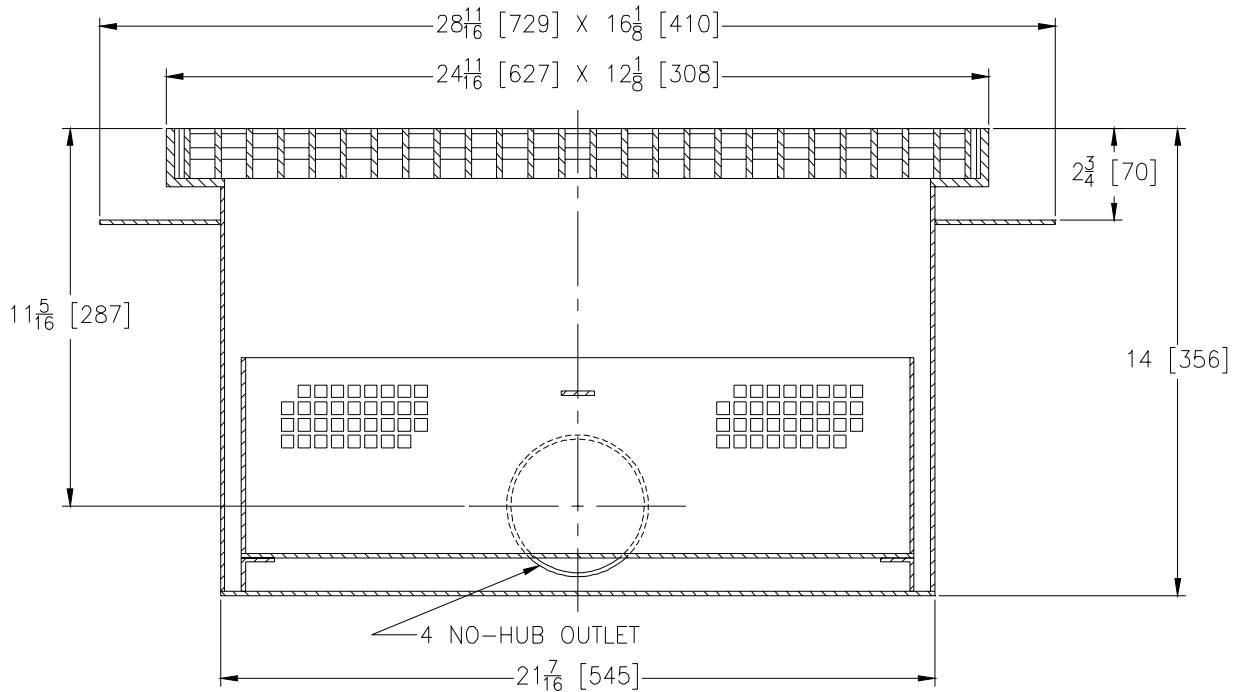
# Z1995-81

SPECIFICATION SHEET

## 24 11/16 X 12 1/8 [627 X 308] A.R.C. SANI-FLOR RECEPTOR 14 [356] SUMP DEPTH

TAG \_\_\_\_\_

Dimensional Data (inches and [ mm ]) are Subject to Manufacturing Tolerances and Change Without Notice



A- Pipe Size In.	Approx Wt. Lbs. [kg]	Grate Open Area Sq. In. [cm <sup>2</sup> ]
4 [102]	100 [45]	202 [1304]

**ENGINEERING SPECIFICATION:** ZURN Z1995-81 Sani-Flor Receptor 24 11/16 x 12 1/8 x 14 [627 x 308 x 356] deep fabricated steel body with integral anchor flange, side outlet, white acid resisting epoxy coated, stainless steel slotted loose set heavy duty bar grate and removable stainless steel sediment bucket.

**OPTIONS** (Check/specify appropriate options)

**PIPE SIZE**

4 [102]

(Specify size/type) **OUTLET**

\_\_\_ NH No-Hub

**PREFIXES**

\_\_\_ Z Acid Resistant Coated Fabricated Steel Body with White A.R.C. Interior\*

**SUFFIXES**

\_\_\_ -KC Anchor Flange with Seepage Holes and Clamp Collar

REV.	DATE: 5/21/04	C.N. NO. 92243
DWG. NO. P-15059 PRODUCT NO. Z1995-81		

\*REGULARLY FURNISHED UNLESS OTHERWISE SPECIFIED