

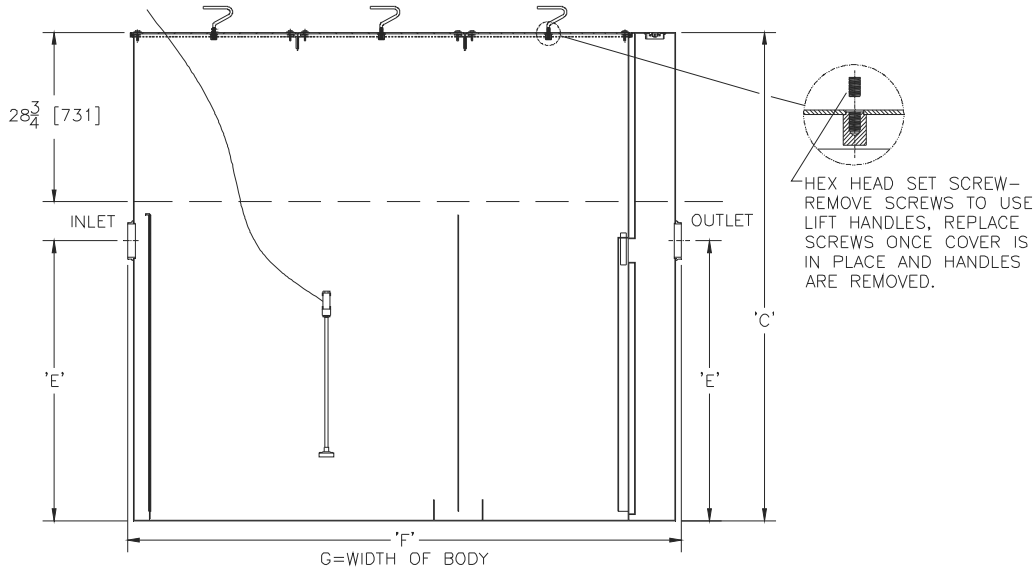


# Z1172-UN-79

## LARGE CAPACITY GREASE INTERCEPTOR W/ CUSTOM USER NOTIFICATION SYSTEM, 28-3/4 [730] EXTENSION, & TAG \_\_\_\_\_ HEAVY-DUTY COVER

SPECIFICATION SHEET

Dimensional Data (inches and [ mm ]) are Subject to Manufacturing Tolerances and Change Without Notice



Size	Inlet/Outlet Size in [mm]	Flow Rate GPM [LPM]	Capacity		Approx. wt. lbs [kg]	Dimensions in inches [mm]			
			Water gal. [L]	Grease lbs [kg]		C	D/E	F	G
1700	6 [152]	400 [1512]	1095 [4139]	800 [363]	2440 [1108]	83 [2108]	47-5/8 [1210]	94 [2388]	67 [1702]

### ENGINEERING SPECIFICATION: ZURN Z1172-UN-79

Large capacity Acid Resistant Coated interior and exterior fabricated steel grease interceptor, rated at 400 GPM [1512 LPM] and 800 Lbs. [363 kg] grease capacity, with internal air relief by-pass, bronze cleanout plug and visible double wall trap seal with removable pressure equalizing/flow diffusing baffle. Gasketed heavy-duty non-skid secured traffic cover rated at 10,000 lbs [4536 kg] maximum load with removable lift handles, complete with flow control fitting. Comes complete with GREASEwatch Monitoring System that will report analog data from 3 channels (top layer or grease, bottom sludge, and total % solids) every 24 hours. Comes with 28-3/4" [731 mm] extension providing an invert of 38-1/2 [978mm] from the top of the floor to the bottom of the inside of the pipe.

### OPTIONS (Check/specify appropriate options)

#### PREFIXES

- \_\_\_ Z Acid Resistant Coated Fabricated Steel\*
- \_\_\_ ZS All Type 304 Fabricated Stainless Steel

Note:  
Size 1700 requires 3 covers.

#### SUFFIXES

- \_\_\_ -AL Aluminum Cover
- \_\_\_ -L Angle type (Z1108-L) flow control device.
- \_\_\_ -PW Plug Wrench

#### Note:

1. Location of inlet from bottom of interceptor cannot be changed.

\* Regularly furnished unless otherwise specified.