



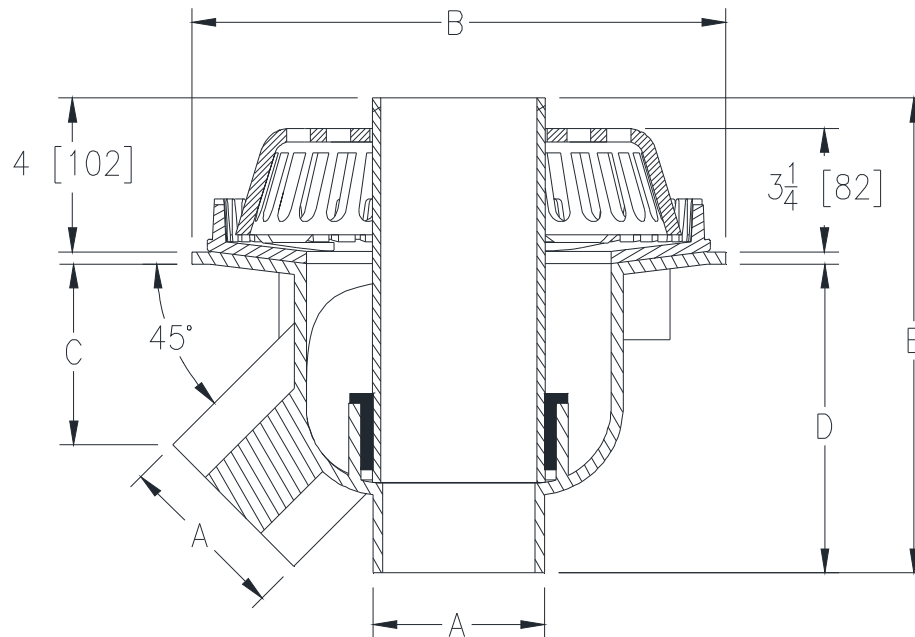
FROET™ 100C-LP

BI-FUNCTIONAL DEEP SUMP DUAL OUTLET
ROOF DRAIN WITH LOW PROFILE DOME

SPECIFICATION SHEET

TAG _____

Dimensional Data (inches and [mm]) are Subject to Manufacturing Tolerances and Change Without Notice



A Pipe Size In. [mm]	B In. [mm]	C In. [mm]	D In. [mm]	E In. [mm]	Approx. Wt. Lbs. [kg]	Dome Open Area Sq. In. [cm ²]
2 [51]	10-1/4 [260]	2-13/16 [71]	5 [127]	11-5/8 [295]	21 [6]	48 [310]
3 [76]	14 [356]	4-7/8 [124]	6-7/8 [175]	13-1/2 [343]	47 [21]	90 [581]
4 [102]	14 [356]	4-7/8 [124]	8 [203]	14-5/8 [371]	53 [24]	90 [581]
5 [127]	18 [457]	5-1/2 [30]	10-1/4 [260]	16-7/8 [429]	83 [38]	127 [819]
6 [152]	18 [457]	5-1/2 [30]	11-1/4 [286]	17-7/8 [454]	89 [40]	127 [819]
8 [203]	25 [635]	8-1/4 [210]	13-3/4 [349]	20-3/8 [518]	122 [55]	203 [1310]

ENGINEERING SPECIFICATION: ZURN Froet™ 100C-LP

Froet™ bi-functional roof drain with 45° primary outlet connection. Powder coated cast iron deep sump body with combination membrane flashing clamp/gravel guard, overflow pipe (2", 3", 4", 5", 6", 8" [51mm, 76mm, 102mm, 127mm, 152mm, 203mm]) with low profile 3-1/4" [82mm] high cast iron dome and 4" [102mm] high cast iron overflow.

OPTIONS (Check/specify appropriate options)

PIPE SIZE

2, 3, 4, 5, 6, 8 [51, 76, 102, 127, 152, 203]

(Specify size) **OUTLET**

_____ NH No-Hub

PREFIXES

_____ Z D.C.C.I. Body with Cast Iron Low Profile Dome*

SUFFIXES

_____C	Underdeck Clamp	_____ER1.5	Elevation Ring (1.5" Insulation)
_____CFW	Control Flow Weir	_____ER2	Elevation Ring (2" Insulation)
_____DP	Top-Set® Deck Plate	_____R	Roof Sump Receiver
_____DU	Cast Iron Dome on Overflow Pipe	_____VEP	Vent Pipe
_____E	Static Extension (2", 4", 6")	_____84	Stainless Steel Perforated Gravel Guard

* Regularly furnished unless otherwise specified.