

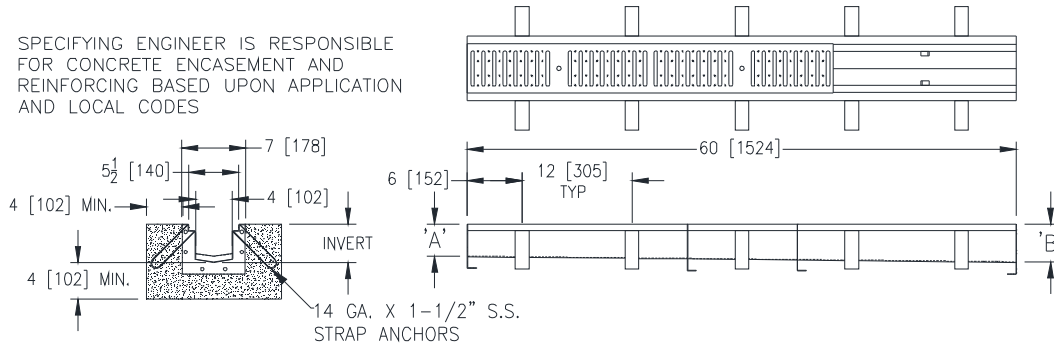


Z890-99

7 [178] WIDE REVEAL TRENCH DRAIN SYSTEM W/ STRAP LOOP ANCHORS

Dimensional Data (inches and [mm]) are Subject to Manufacturing Tolerances and Change Without Notice

SPECIFYING ENGINEER IS RESPONSIBLE FOR CONCRETE ENCASEMENT AND REINFORCING BASED UPON APPLICATION AND LOCAL CODES



ENGINEERING SPECIFICATION: Zurn Z890-99

Channels are 60" [1524mm] long, 7" [178mm] wide and have a 4" [102mm] throat. Modular channel sections are made of 16 ga. fabricated Stainless Steel conforming to ASTM A-240 (type 304). Channels have a bolted, flanged connection between channel sections that will not separate during the installation, gaskets available. Channels weigh less than 2.31 lbs. [1.05kg] per linear foot, have a smooth, 1-1/2" [38mm] radiused self cleaning bottom with a Manning's coefficient of .009 and 1.04% or neutral 0% built in slope. Channels have feet for patty pour or leveling studs standard to secure trench in its final location and 14 GA. x 1-1/2" [38mm] stainless steel strap loop anchors at 12" [305mm] spacing for anchoring. Channels are provided with standard FS grates that lock down to frame. Zurn 6" [152mm] wide reveal Fabricated Stainless Steel Grate conforming to ASTM specification A-240, (type 304), is rated class A per the DIN EN1433 top load classification. Supplied in 40" [1016mm] nominal lengths with 5/16" [8mm] wide slots, and 3/4" [19mm] bearing depth. Grate has an open area of 12.00 sq. in per ft. [7,742 sq. mm per meter]. Channels shall be produced in the U.S.A.

PREFIX OPTIONS (Check/specify appropriate options)

___ Z Five-foot, Type 304 Stainless Steel*

SUFFIX OPTIONS (Check/specify appropriate options)

Outlet Adapters Add/Each

- ___ -E1 Closed End Cap
- ___ -E2 2 [51] No-Hub End Outlet
- ___ -E3 3 [76] No-Hub End Outlet
- ___ -E4 4 [102] No-Hub End Outlet
- ___ -U2 2 [51] No-Hub Bottom Outlet
- ___ -U3 3 [76] No-Hub Bottom Outlet
- ___ -U4 4 [102] No-Hub Bottom Outlet

Grate Options (Load Classifications are per DIN EN1433)

- ___ -BDC Black Acid Resistant Epoxy Coated Ductile Grate - Class C
- ___ -BDE Black Acid Resistant Epoxy Coated Ductile Grate - Class E
- ___ -DC Ductile Iron Solid Cover - Class C
- ___ -DGC Ductile Iron Slotted Grate - Class C
- ___ -DGE Ductile Iron Slotted Grate - Class E
- ___ -DGE-NA Ductile Iron Slotted Grate - Class E - North American
- ___ -GG Fiberglass Grate - Class A
- ___ -HPD Heel-Proof Ductile Slotted Grate - Class B
- ___ -HPDE Heel-Proof Ductile Slotted Grate - Class E
- ___ -HPP Heel-Proof Polyethylene Grate - Class A
- ___ -LD Ductile Iron Longitudinal Slotted Grate - Class B
- ___ -RFSC Reinforced Slotted Stainless Steel Grate - Class C
- ___ -RPSC Reinforced Perforated Stainless Steel Grate - Class C
- ___ -RPSRC Reinforced Perforated Stainless Steel Reversed Punch Grate - Class C

Decorative Grate Options (Load Classifications are per DIN EN1433)

- ___ -BCD Bronze Circular Decorative Grate - Class A
- ___ -BDD Bronze Diagonal Decorative Grate - Class A
- ___ -DCD Ductile Iron Circular Decorative Grate - Class C
- ___ -DDD Ductile Iron Diagonal Decorative Grate - Class A
- ___ -DOG Ductile Iron Decorative Grate - Class B
- ___ -DWW Ductile Wave Decorative Grate - Class A
- ___ -HPB Heel-Proof Bronze Slotted Grate - Class A
- ___ -HPS Heel-Proof Stainless Steel Slotted Grate - Class A
- ___ -SBG Stainless Steel Bar Grate - Class E
- ___ -SCD Stainless Steel Circular Decorative Grate - Class B
- ___ -SDD Stainless Steel Diagonal Decorative Grate - Class B
- ___ -SMG Stainless Steel Mesh Grate - Class B
- ___ -SOG Stainless Steel Decorative Grate - Class B

MADE in the U.S.A. (Load Classifications are per DIN EN1433)

- ___ -BDE Black Acid Resistant Epoxy Coated Ductile Grate - Class E
- ___ -DGC-USA Ductile Iron Slotted Grate - Class C
- ___ -DGE-USA Ductile Iron Slotted Grate - Class E
- ___ -FS Fabricated Stainless Steel Slotted Grate - Class A *
- ___ -PPC Plastic Perforated Grate - Class C
- ___ -PS Perforated Stainless Steel Grate - Class A
- ___ -SBGS Serrated Stainless Steel Bar Grate CUSTOM - Class B

Trench No.	Dimensions in Inches [mm]		Flow		
	'A' Shallow Inv.	'B' Deep Inv.	(cfs)	(gpm)	(lps)
89001-99	3.50 [89]	4.13 [106]	0.216	97	6
89002-99	4.13 [105]	4.75 [121]	0.276	122	8
89002N-99	4.75 [121]	4.75 [121]	-	-	-
89003-99	4.75 [121]	5.38 [137]	0.336	151	10
89004-99	5.38 [137]	6.00 [152]	0.399	179	11
89004N-99	6.00 [152]	6.00 [152]	-	-	-
89005-99	6.00 [152]	6.63 [168]	0.461	207	13
89006-99	6.63 [168]	7.25 [184]	0.524	235	15
89006N-99	7.25 [184]	7.25 [184]	-	-	-
89007-99	7.25 [184]	7.88 [200]	0.586	263	17
89008-99	7.88 [200]	8.50 [216]	0.651	292	18
89008N-99	8.50 [216]	8.50 [216]	-	-	-
89009-99	8.50 [216]	9.13 [232]	0.715	321	20
89010-99	9.13 [232]	9.75 [248]	0.778	349	22
89010N-99	9.75 [248]	9.75 [248]	-	-	-
89011-99	9.75 [248]	10.38 [264]	0.842	378	24
89012-99	10.38 [264]	11.00 [279]	0.907	407	26
89012N-99	11.00 [279]	11.00 [279]	-	-	-
89013-99	11.00 [279]	11.63 [295]	0.971	436	28
89014-99	11.63 [295]	12.25 [311]	1.036	465	29
89014N-99	12.25 [311]	12.25 [311]	-	-	-
89015-99	12.25 [311]	12.88 [327]	1.101	494	31
89016-99	12.88 [327]	13.50 [343]	1.165	523	33
89016N-99	13.50 [343]	13.50 [343]	-	-	-
89017-99	13.50 [343]	14.13 [359]	1.23	552	35
89018-99	14.13 [359]	14.75 [375]	1.295	581	37
89018N-99	14.75 [375]	14.75 [375]	-	-	-
89019-99	14.75 [375]	15.38 [391]	1.359	610	39
89020-99	15.38 [391]	16.00 [406]	1.424	639	40

Decorative MADE in the U.S.A. (Load Classifications are per DIN EN1433)

- ___ -BZ Bronze Decorative Grate - Class A
- ___ -NBZ-USA Nickel Bronze Decorative Grate - Class A
- ___ -PDE-USA Ductile Iron Perforated ADA Grate - Class E
- ___ -PSR Perforated Stainless Steel Raised Grate - Class A
- ___ -SWG Stainless Steel Wire Grate - Class A

Miscellaneous Options

- ___ -DB Drop-In Bucket Strainer
- ___ -K Anchor Flange
- ___ -KC Clamp Collar and Pan
- ___ -VP Vandal-Proof Lockdown

* Regularly furnished unless otherwise specified.