



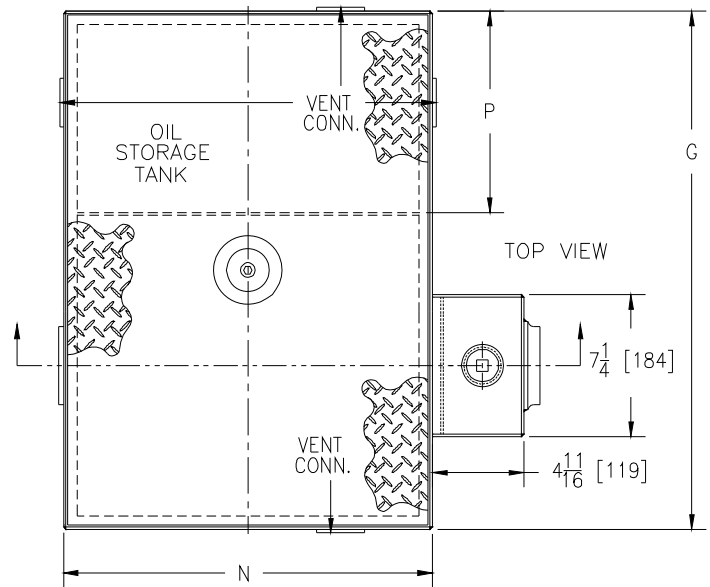
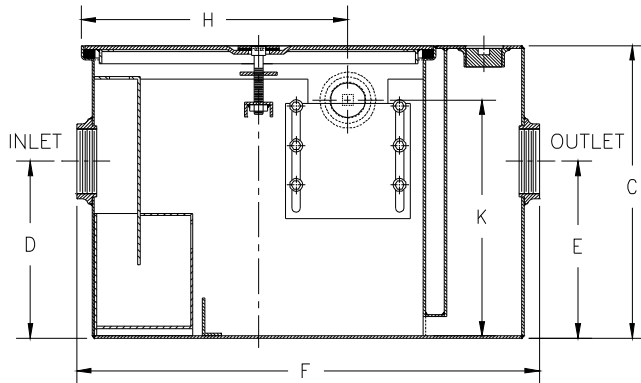
Z1186-ST-105

OIL INTERCEPTOR
 SIZE 500 W/ INTEGRAL STORAGE TANK & 4" [102] INLET/
 OUTLET

SPECIFICATION SHEET

TAG® _____

Dimensional Data (inches and [mm]) are Subject to Manufacturing Tolerances and Change Without Notice



SIZE	Inlet/Outlet Size	Flow Rate G.P.M.	Water Capacity Gal.[L]	Approx. Wt. Lbs.[kg]	P
500	4 [102]	20 [76]	10 [38]	115 [52]	10-1/8 [257]

Dimensions in inches [mm]							
SIZE	C	D/E	F	G	H	K	N
500	15-1/2 [394]	9-3/8 [238]	25-1/16 [637]	26-1/2 [673]	14-3/16 [360]	12-1/2 [318]	18-7/8 [479]

ENGINEERING SPECIFICATION: ZURN Z1186-ST-105 Acid Resistant Coated interior and exterior fabricated steel oil interceptor, with bronze cleanout plug and visible double wall trap seal, removable combination pressure equalizing/flow diffusing baffle and sediment bucket, oil drawoff, vent connections, secured gasketed non-skid cover, complete with flow control fitting and left hand integral storage tank. Regularly furnished with inlet and outlet in high position. Note: location of outlet from bottom of interceptor cannot be changed.

OPTIONS (Check/specify appropriate options)

PREFIXES

___ Z Acid Resistant Coated Fabricated Steel*

SUFFIXES

- ___ -E Acid Resistant Coated interior and exterior fabricated steel section. (Specify 'C' Dim. required) for recessed installation
- ___ -HD Heavy duty traffic cover rated at 10,000 lbs. maximum safe live load.
- ___ -K Anchor flange 1 3/4 [44] down from top and 2 [51] wide. A 3 [76] minimum extension height is required when anchor flange (-K) option is specified. (Specify 'C' Dim. height required.)
- ___ -KC Anchor flange 1 3/4 [44] down from top and 2 [51] wide with clamp collar.

* Regularly furnished unless otherwise specified.