

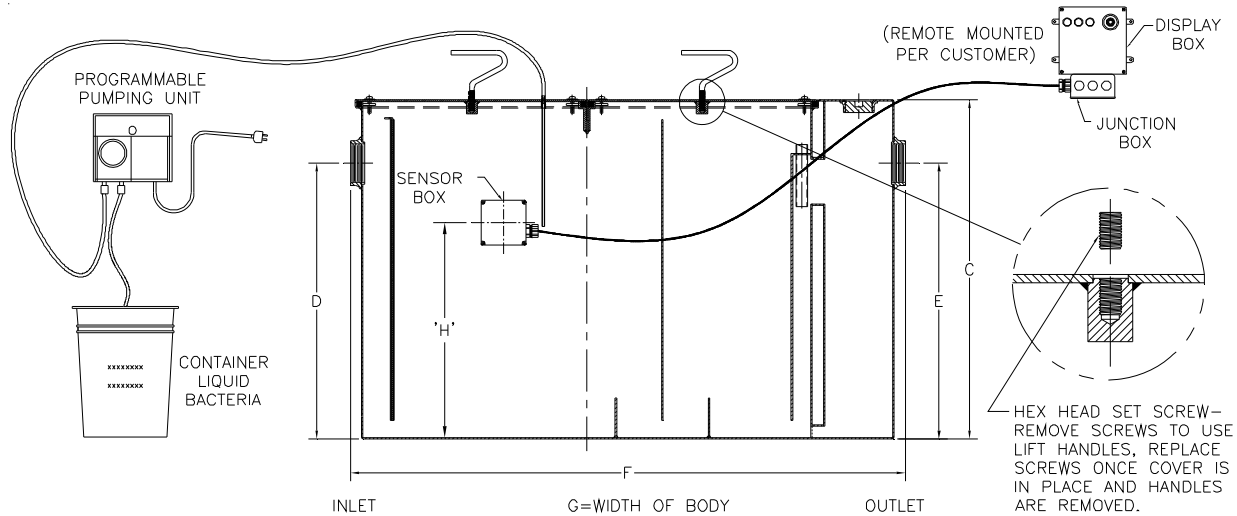


# Z1172-117

## LARGE CAPACITY GREASE INTERCEPTOR

TAG \_\_\_\_\_

Dimensional Data (inches and [ mm ]) are Subject to Manufacturing Tolerances and Change Without Notice



Size	Inlet/Outlet Size	Flow Rate G.P.M. [L]	Capacity		Approx. Wt. Lbs. [kg]	Dimensions in Inches [mm]				
			Water Gal. [L]	Grease Lbs. [kg]		C	D/E	F	G	H
900	3 [76]	75 [284]	65 [246]	150 [68]	316 [143]	22 3/4 [578]	18 1/2 [470]	36 [914]	28 5/8 [727]	11 1/4 [286]
1000		100 [378]	110 [416]	200 [91]	408 [185]	27 [686]	23 [584]	42 3/4 [1086]	33 5/8 [854]	16 1/8 [410]
1100		125 [472]	150 [567]	250 [114]	749 [340]	30 1/8 [765]	24 1/2 [622]	49 1/4 [1251]	40 [1016]	16 5/16 [414]
1200	4 [102]	150 [567]	195 [737]	300 [136]	856 [389]	30 3/4 [781]	25 1/4 [641]	56 [1422]	41 5/8 [1057]	18 1/16 [459]
1300		200 [756]	270 [1021]	400 [182]	1016 [461]	35 1/2 [902]	29 7/8 [759]	61 [1549]	43 5/8 [1108]	21 7/8 [556]
1400	5 [127]	250 [945]	465 [1758]	500 [227]	1384 [628]	41 [1041]	36 [914]	71 [1803]	51 5/8 [1311]	28 9/16 [725]
1500		300 [1134]	665 [2514]	600 [272]	1770 [804]	46 1/4 [1175]	39 5/8 [1006]	80 [2032]	58 5/8 [1489]	32 1/2 [826]
1600	6 [152]	350 [1323]	865 [3278]	700 [318]	2096 [951]	50 1/2 [1283]	43 7/8 [1114]	87 [2210]	63 5/8 [1616]	35 7/8 [911]
1700		400 [1512]	1095 [4139]	800 [363]	2440 [1108]	54 1/4 [1378]	47 5/8 [1210]	94 [2388]	67 [1702]	39 3/4 [1010]
1800		450 [1701]	1280 [4838]	900 [409]	2710 [1230]	55 1/4 [1403]	48 5/8 [1235]	100 [2540]	72 [1829]	40 7/8 [1038]
1900		500 [1890]	1440 [5443]	1000 [454]	2857 [1297]	57 1/4 [1454]	51 5/8 [1311]	104 [2642]	74 [1880]	43 5/8 [1108]

**ENGINEERING SPECIFICATION: ZURN Z1172-117**

Large capacity Acid Resistant Coated interior and exterior fabricated steel grease interceptor, rated at \_\_\_ GPM and \_\_\_ Lbs. grease capacity, with internal air relief by-pass, bronze cleanout plug and visible double wall trap seal with removable pressure equalizing/flow diffusing baffle. Gasketed non-skid secured cover with removable lift handles, complete with flow control fitting. Furnished with 110vac programmable pumping unit, pump mounting hardware, 30 [9144] feet of poly tubing and 5 [19] gallons of grease eating bacteria. Complete with a fiberglass sensor box containing an electronic oil level sensor (specify right or left side)\*, a fiberglass display box with one green power light, one yellow & red dual oil level lights, audio alarm and junction box. Regularly furnished with inlet and outlet in high position.

**OPTIONS** (Check/specify appropriate options)

**PREFIXES**

- \_\_\_ Z Acid Resistant Coated Fabricated Steel\*
- \_\_\_ ZS All Type 304 Fabricated Stainless Steel

Note:  
 Sizes 900 and 1000 require 1 cover.  
 Sizes 1100 thru 1600 require 2 covers.  
 Sizes 1700 thru 1900 require 3 covers.

**SUFFIXES**

- \_\_\_ -AL Aluminum Cover
- \_\_\_ -L Angle type (Z1108-L) flow control device.

**Note:**

- \* 1. Factory installed sensor box is mounted on the left or right hand side of the unit when facing inlet (must be specified).
2. Power supply 120V GFCI.
3. Recommended Installations: Sitting on the floor or recessed in a pit only. (A pit installation requires that a drain or sump pump be installed to keep the pit relatively dry).

**REV. A    DATE: 10/30/07    C.N. NO. 97557**  
**DWG. NO. P-15013    PRODUCT NO. Z1172-117**

\*REGULARLY FURNISHED UNLESS OTHERWISE SPECIFIED