



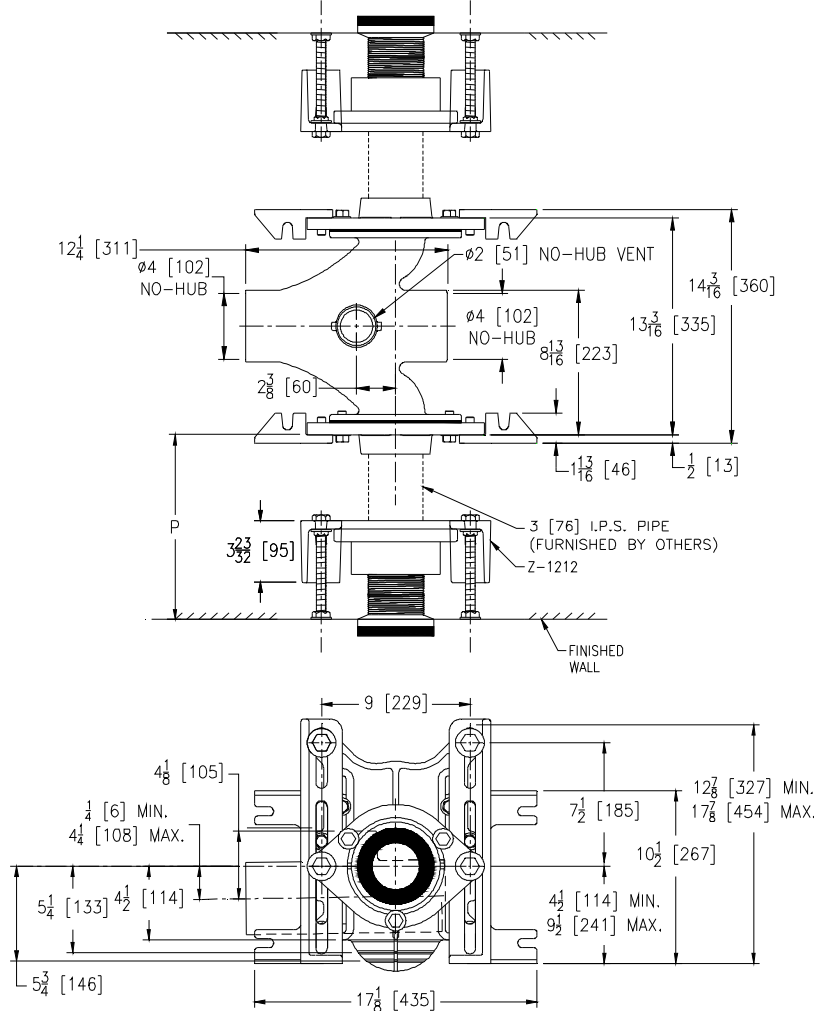
Z1201-ND4-A

EZCARRY® ADJUSTABLE HORIZONTAL HIGH
PERFORMANCE BACK-TO-BACK SIPHONJET NO-HUB WATER
CLOSET CARRIER SYSTEM WITH AUXILIARY SUPPORT

SPECIFICATION SHEET

TAG _____

Dimensional Data (inches and [mm]) are Subject to Manufacturing Tolerances and Change Without Notice



Product Number	Approx. Wt. lbs [kg]
Z1201-ND4-A	148 [67]

Note:

1. P= Greater than 18 [457]
2. Feet bolted to floor using min. 1/2 [13] dia. anchors.

ENGINEERING SPECIFICATION: ZURN Z1201-ND4-A

EZCarry® horizontal siphon jet water closet carrier system with high performance waterway and 4" [102mm] no-hub connections. System includes Dura-Coated cast iron double main fitting with hydro-mechanically optimized sweep and extended 2" [51mm] vent, adjustable gasketed faceplates, universal floor mounted pre-fab slotted foot supports, fixture bolts, trim, stud protectors, bonded "Neo-Seal" gaskets, and corrosion resistant, adjustable 3" [76mm] dia. X 6" [152mm] couplings with integral test caps designed to increase flow velocity and line carry. Complete with Z1212 auxiliary support systems for extended chase.

OPTIONS (Check/specify appropriate options)

Z1201-ND4-A 4 [102] No-Hub Back-to-Back Inlet (Double)

PREFIXES

___ Z D.C.C.I. System with Zurn ZZ Adjustable Coupling*

SUFFIXES

___ -B	Adapter for Blowout Type Fixture Support	___ -G	Galvanized Cast Iron
___ -CC	Corrosion Resistant Cast Iron Coupling (2-1/4 [57] to 12 [305])	___ -RYK	Unistrut Pre-Fab Foot Support
___ -CL	Custom Length Standard Coupling with Integral Test Cap (Specify Length 4, 8, 10, 12 [102, 203, 254, 305])	___ -RYK17	One Piece Unistrut Pre-Fab Foot
___ -F	Floor Mounted, Back Outlet Fixture Support	___ -VP	Vandal-Proof Trim
		___ -45	Finishing Frame for Siphon Jet System
		___ -50	Flush Valve Supply Support for Water Closets

* Regularly furnished unless otherwise specified.