



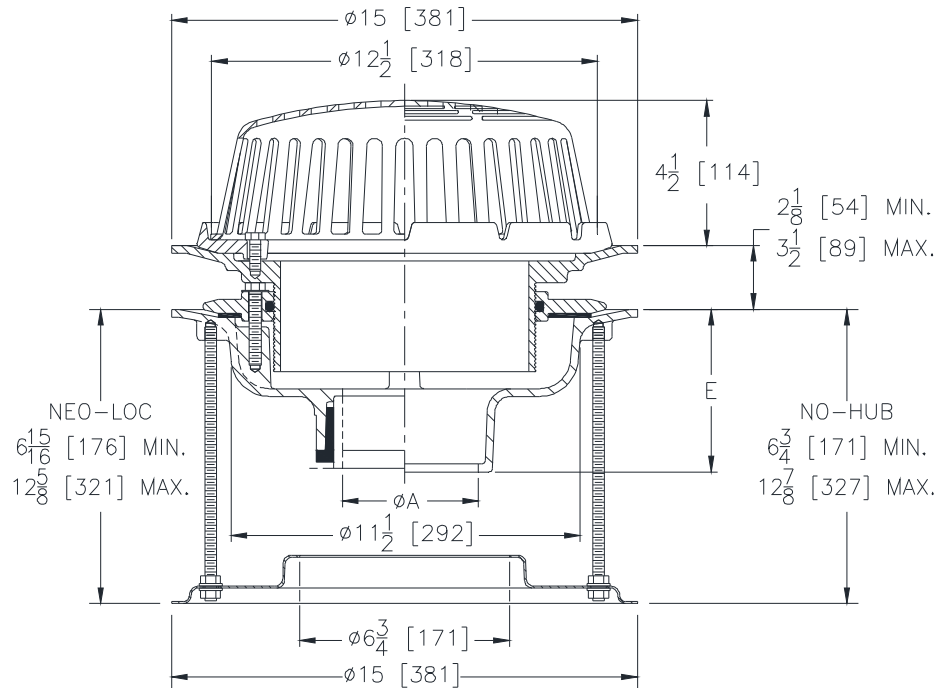
# Z100-294

15 [381] DIAMETER MAIN ROOF DRAIN WITH  
ADJUSTABLE EXTENSION & STABILIZER  
ASSEMBLY FOR 6 [152] OUTLET

SPECIFICATION SHEET

TAG \_\_\_\_\_

Dimensional Data (inches and [ mm ]) are Subject to Manufacturing Tolerances and Change Without Notice



A- Pipe Size In. [mm]	Approx. Wt. Lbs. [kg]	Dome Open Area Sq. In. [cm <sup>2</sup> ]
6 [152]	48 [22]	103 [665]

### ENGINEERING SPECIFICATION: ZURN Z100-294

15" [381mm] Diameter roof drain. Dura-Coated cast iron body with combination membrane flashing clamp/gravel guard, adjustable extension, secondary clamping collar with o-ring, low silhouette Poly-Dome strainer, and stabilizer assembly for 6" [152mm] outlet.

### OPTIONS (Check/specify appropriate options)

#### PIPE SIZE

6 [152]  
6 [152]

#### (Specify size/type) OUTLET

\_\_\_\_\_ NH No-Hub  
\_\_\_\_\_ NL Neo-Loc

#### E BODY HT. DIM.

5-1/4 [133]  
5-7/16 [138]

#### PREFIXES

\_\_\_\_\_ Z D.C.C.I. Body with Poly-Dome\*  
\_\_\_\_\_ ZA D.C.C.I. Body with Aluminum Dome  
\_\_\_\_\_ ZC D.C.C.I. Body with Cast Iron Dome  
\_\_\_\_\_ ZRB D.C.C.I. Body with Plain Bronze Dome

#### SUFFIXES

_____ -AR Acid Resistant Epoxy Coated Finish	_____ -SC Secondary Clamping Collar
_____ -AW 3/4 [19] to 4 [102] Adj. Water Level Regulator	_____ -SS Stainless Steel Mesh Screen Over Dome
_____ -BS Bronze Mesh Screen Over Dome	_____ -ST Dome with Solid Top (ZA, ZC, & ZRB Only)
_____ -DX Dex-o-tex Flange	_____ -VP Vandal-Proof Secured Top
_____ -E Static Extension 1 [25] thru 4 [102] (Specify Ht.)	_____ -W2 2 [51] Internal Water Dam
_____ -FG Flush Grate	_____ -W3 3 [76] Internal Water Dam
_____ -G Galvanized Cast Iron	_____ -W4 4 [102] Internal Water Dam
_____ -GD Galvanized Cast Iron Dome (ZC only)	_____ -84 Stainless Steel Perforated Gravel Guard
_____ -HD 6-3/4 [171] High Aluminum Dome Strainer (148 Sq. In. [955 cm <sup>2</sup> ] Open Area)	_____ -85 Stainless Steel Perforated Extension
_____ -R Roof Sump Receiver	_____ -89 2 [51] High External Water Dam

\* Regularly furnished unless otherwise specified.

Zurn Industries, LLC | Specification Drainage Operation  
1801 Pittsburgh Avenue, Erie, PA U.S.A. 16502 · Ph. 855-663-9876, Fax 814-454-7929  
In Canada | Zurn Industries Limited  
3544 Nashua Drive, Mississauga, Ontario L4V 1L2 · Ph. 905-405-8272, Fax 905-405-1292  
[www.zurn.com](http://www.zurn.com)

Rev. -  
Date: 12/04/14  
C.N. No. 132014  
Prod. | Dwg. No. Z100-294