

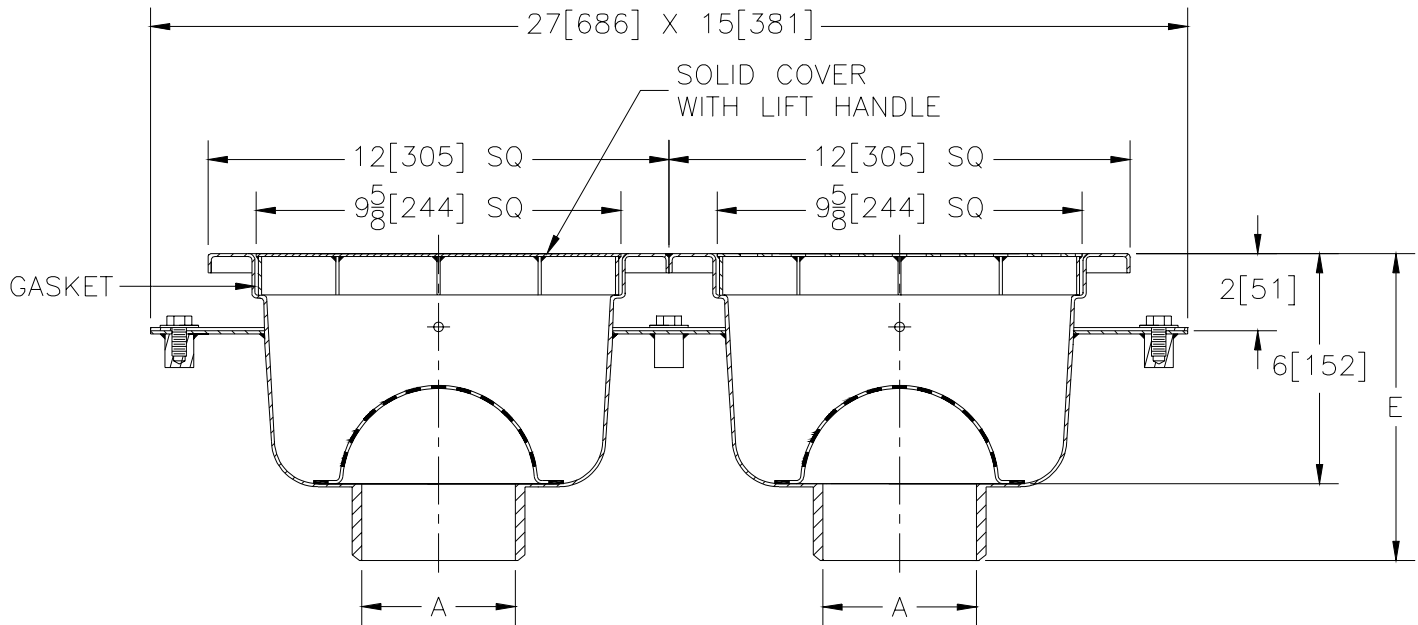


Z-1750-104

12 X 12 [305 x 305] SANI-FLOR RECEPTOR 6 [152] SUMP DEPTH

TAG _____

Dimensional Data (inches and [mm]) are Subject to Manufacturing Tolerances and Change Without Notice



A- Pipe Size In.	Approx. Wt. Lbs. [kg]	Grate Open Area Sq. In. [cm ²]
2-3-4 [50-75-100]	30 [14]	23 [148]

ENGINEERING SPECIFICATION: ZURN Z-1750-104
two 12 x 12 x 6 [305 x 305 x 152] deep, 14 gage, All Type 304 (CF8) Stainless Steel medium duty Sani-Flor receptors with seepage pan, clamp collar, interchangeable solid gasketed cover with lift handle and loose set full grate with 1/2 [13] square openings and anti-splash interior dome strainer.

OPTIONS (Check/specify appropriate options)

PIPE SIZE

2 thru 4 [50 thru 100]

(Specify size/type) **OUTLET**

___ BW Butt Weld

'E' BODY HT. DIM.

8 1/16 [205]

PREFIXES

- ___ Z- Type 304 (CF8) Stainless Steel Body*
- ___ ZM- Type 316 (CF8M) Stainless Steel

SUFFIXES

- ___ -HP Heelproof Grate
- ___ -P 1/2 [13] Trap Primer Connection
- ___ -Y Sediment Bucket
- ___ -YS Suspended Sediment Bucket

*REGULARLY FURNISHED UNLESS OTHERWISE SPECIFIED

REV.	DATE: 6/ 16/97	C.N. NO. 78021
DWG. NO. P-14487 PRODUCT NO. Z-1750-104		