



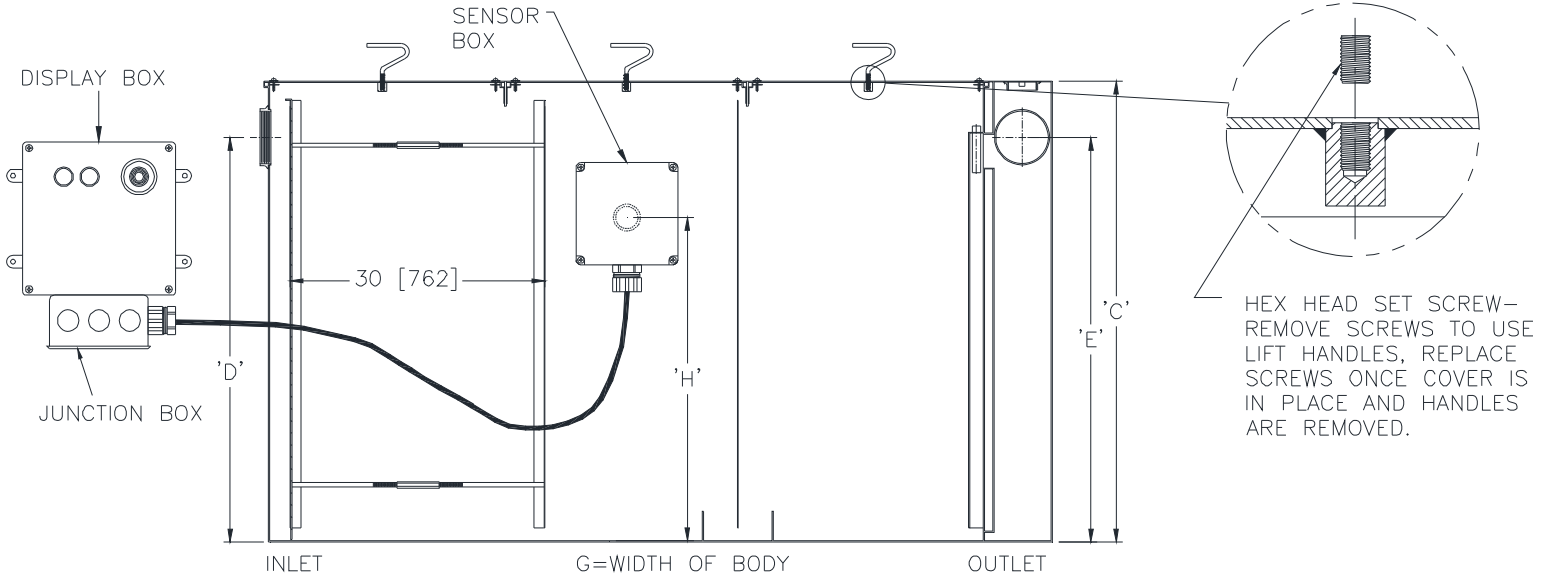
Z1172-UN-80

LARGE CAPACITY GREASE INTERCEPTOR WITH FALL-BACK BAFFLE, SIDE OUTLET, AND USER NOTIFICATION SYSTEM

SPECIFICATION SHEET

TAG _____

Dimensional Data (inches and [mm]) are Subject to Manufacturing Tolerances and Change Without Notice



Size	Inlet/Outlet Size in [mm]	Flow Rate GPM [LPM]	Water Cap. Gal [L]	Grease Cap. Lbs [kg]	No. of Covers	Approx Wt. lbs [kg]	Dimensions in inches [mm]				
							C	D/E	F	G	H
1700	6 [152]	400 [1512]	1095 [4139]	800 [363]	3	2440 [1108]	54-1/4 [1378]	47-5/8 [1210]	94 [2388]	67 [1702]	39-3/4 [1010]

ENGINEERING SPECIFICATION: ZURN Z1172-UN-80

Large capacity Acid Resistant Coated interior and exterior fabricated steel grease interceptor, rated at 400 GPM and 800 Lbs. grease capacity, with internal air relief by-pass, bronze cleanout plug (which can be used as a sampling port) and visible double wall trap seal with removable pressure equalizing/flow diffusing baffle. Gasketed non-skid secured cover with removable lift handles, complete with flow control fitting, fall-back baffle, side outlet, and user notification system. Regularly furnished with inlet and outlet in high position.

OPTIONS (Check/specify appropriate options)

PREFIXES

- ___ Z Acid Resistant Coated Fabricated Steel*
- ___ ZS All Type 304 Fabricated Stainless Steel

SUFFIXES

- ___ -AL Aluminum Cover
- ___ -L Angle type (Z1108-L) flow control device.
- ___ -PW Plug Wrench

* Regularly furnished unless otherwise specified.