



Z415-B-SR

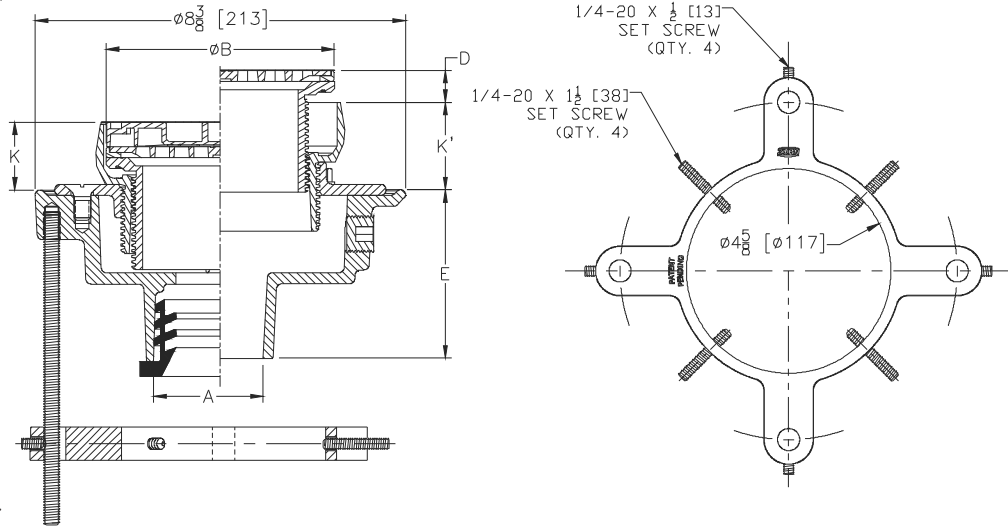
BODY ASSEMBLY WITH "TYPE B" STRAINER AND EZ1™ TECHNOLOGY WITH STABILIZER RING

SPECIFICATION SHEET

TAG _____

**PATENT
PENDING**

Dimensional Data (inches and [mm]) are Subject to Manufacturing Tolerances and Change Without Notice



Note:
Minimum K Dimension is Only Possible with -LR Option when using 6" [152] or 8" [203] Strainer

Dimensions In Inches [mm]								Approx. Wt. Lbs. [kg]	Strainer Open Area Sq. In [cm ²]
A Pipe Size	B Strainer Dia.	D		K		K'			
		Min.	Max.	Min.	Max.	Min.	Max.		
2,3 [51,76]	5 [127]	0	1-1/4 [32]	1-1/2 [38]	2-23/32 [69]	2-1/32 [51]	3-7/32 [82]	16 [7]	6-1/4 [40]
2,3,4 [51,76,102]	6 [152]	0	1-1/4 [32]	1-1/2 [38]	2-9/16 [65]	1-31/32 [50]	3-5/32 [80]	19 [9]	9 [58]
3,4 [76,102]	8 [203]	0	1-7/32 [31]	1-7/8 [48]	2-29/32 [74]	2-13/32 [61]	3-1/2 [89]	24 [11]	20 [129]
6 [152]	8 [203]	0	1-7/32 [31]	1-7/8 [48]	2-29/32 [74]	2-13/32 [61]	3-1/2 [89]	26 [12]	20 [129]

ENGINEERING SPECIFICATION: ZURNZ415-B-SR

Floor and shower drain, Dura-coated cast iron body with bottom outlet, combination invertible membrane clamp and adjustable collar with seepage slots and top assembly. EZ1™ drainage series is engineered to simplify product installation, comprised of concrete shield, up to 1-1/4" [32mm] of vertical post pour adjustment, pre-packaged shims for tilt correction and integrated, self-contained "Type B" light duty strainer with rough-in cover for protection during concrete pour. Complete with Dura-Coated cast iron floor drain stabilizer ring with four 1/4-20 x 1/2" [13mm] threaded rods and four 1/4-20 x 1-1/2" [38mm] securing screws to outlet piping.

OPTIONS (Check/specify appropriate options)

PIPE SIZE

- 2,3,4 [51,76,102]
- 2,3,4 [51,76,102]
- 2 [51]
- 3 [76]
- 4 [102]
- 6 [152]
- 2,3,4 [51,76,102]
- 2,3,4 [51,76,102]

(Specify size/type) OUTLET

- ___ IC Inside Caulk
- ___ IG Inside Gasket
- ___ IP Threaded
- ___ IP Threaded
- ___ IP Threaded
- ___ IP Threaded
- ___ NH No-Hub
- ___ NL Neo-Loc

'E' BODY HT. DIM.

- 4-13/16 [122]
- 4-13/16 [122]
- 2-7/16 [62]
- 2-3/4 [70]
- 2-13/16 [71]
- 2-7/8 [73]
- 3-13/16 [97]
- 3-7/8 [98]

PREFIXES

- ___ ZB D.C.C.I. Body Assembly w/ Polished Bronze Top
- ___ ZN D.C.C.I. Body Assembly w/ Polished Nickel Bronze Top*
- ___ ZS D.C.C.I. Body Assembly w/ Polished Stainless Steel Top

SUFFIXES

- ___ -AR Acid Resisting Epoxy Coated Cast Iron
- ___ -EF 3/4 [19] Extension Frame
- ___ -G Galvanized Cast Iron
- ___ -LR Low Rough-In (For 6 [152] and 8 [203] Strainers Only)
- ___ -P Trap Primer Connection (Specify 1/2* [13] or 3/4 [19])
- ___ -TC Neo-Loc Test Cap Gasket (2,3,4 [51,76,102] NL Outlet Only)
- ___ -TSP Trap Seal Protection Device (Size Matches Drain Outlet Selected) (See Z1072)
- ___ -U 2 to 3-1/4 [51 to 83] High Extension Adapter
- ___ -VP Vandal-Proof Secured Top
- ___ -Y Sediment Bucket

* Regularly furnished unless otherwise specified.