



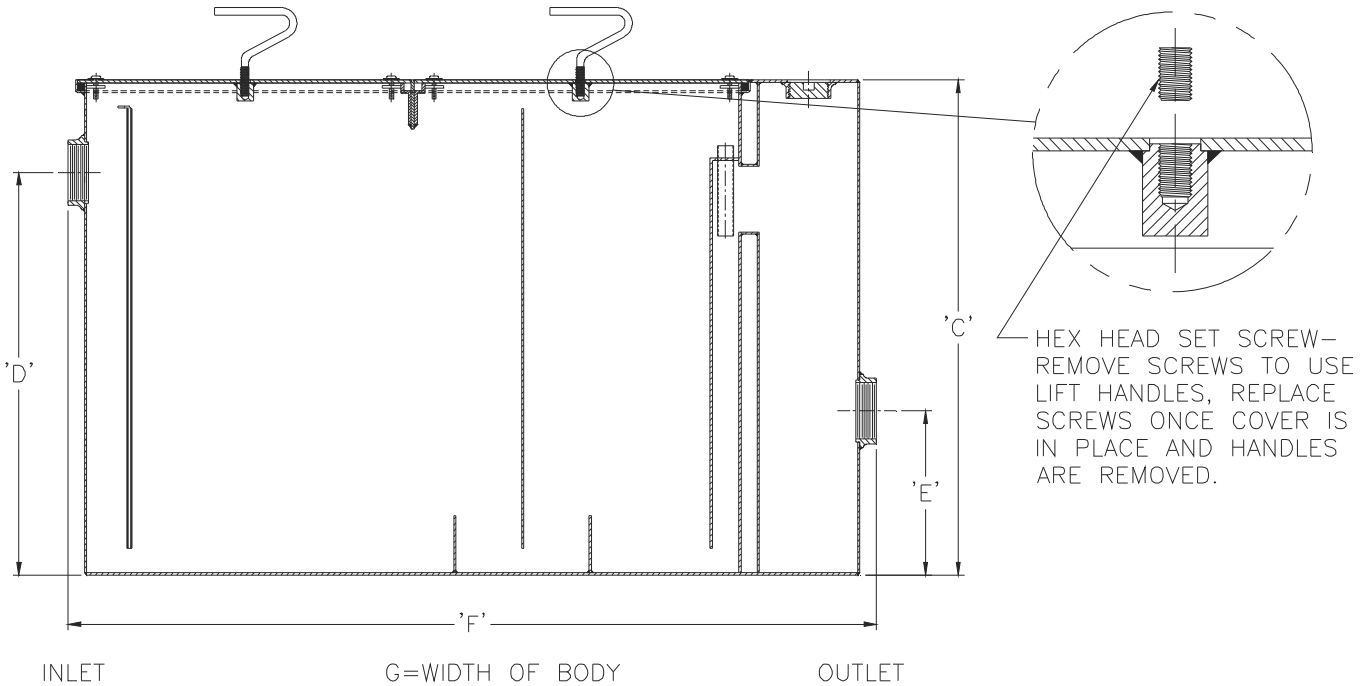
Z1172-176

LARGE CAPACITY GREASE INTERCEPTOR WITH LOW OUTLET

SPECIFICATION SHEET

TAG _____

Dimensional Data (inches and [mm]) are Subject to Manufacturing Tolerances and Change Without Notice



Size	Inlet/Outlet Size	Flow Rate G.P.M. [L.P.M.]	Capacity		No. of Covers	Approx. Wt. Lbs. [kg]	Dimensions in Inches [mm]				
			Water Gal. [L]	Grease Lbs. [kg]			C	D	E	F	G
1000	3 [76]	100 [378]	110 [416]	200 [91]	1	408 [185]	27 [686]	23[584]	4 [102]	42-3/4 [1086]	33-5/8 [854]

ENGINEERING SPECIFICATION: ZURN Z1172-176

Large capacity Acid Resistant Coated interior and exterior fabricated steel grease interceptor, rated at 100 GPM [378 L.P.M.] and 200 Lbs. [91 Kg.] grease capacity, with internal air relief by-pass, bronze cleanout plug (which can be used as a sampling port) and visible double wall trap seal with removable pressure equalizing/flow diffusing baffle. Gasketed non-skid secured cover with removable lift handles, complete with flow control fitting. Regularly furnished with inlet in high position, and outlet in low position.

OPTIONS (Check/specify appropriate options)

PREFIXES

- ___ Z Acid Resistant Coated Fabricated Steel*
- ___ ZS All Type 304 Fabricated Stainless Steel

SUFFIXES

- ___ -AL Aluminum Cover
- ___ -E Acid Resistant Coated Interior and exterior fabricated steel extension section. (Specify 'C' Dim. required) for recessed installation.
- ___ -ER Acid resistant coated interior and exterior fabricated retro fit steel extension section (Specify extension height required), with PVC cleanout extension kit.
- ___ -HD Heavy duty traffic cover rated at 10,000 lbs. [4536 kg] maximum safe live load. An increase 'C' dim. is required when -HD option is specified. (See -HD option specification sheet)
- ___ -K Anchor flange 1-3/4 [44] down from top and 2 [51] wide. (A 3 [76] minimum Extension Height is required when Anchor Flange (-K) Option is specified.)
- ___ -KC Anchor flange 1-3/4 [44] down from top and 2 [51] wide with clamp collar. (A 3 [76] minimum Extension Height is required when Anchor Flange (-KC) Option is specified.)
- ___ -L Angle type (Z1108-L) flow control device.
- ___ -PW Plug Wrench
- ___ -RE Recessing receiver enclosed type for recessed installation. Furnished with gasketed non-skid cover with removable lift handles. (Sizes 900 & 1000 Only)

* Regularly furnished unless otherwise specified.