



# ZE1201-ND4-80

17 [431] ONE PIECE RYK FOOT SUPPORT ELONGATED  
 BARRELL FITTING 36 [914] EZCARRY® ADJUSTABLE  
 HORIZONTAL HIGH PERFORMANCE SIPHON JET NO-HUB  
 WATER CLOSET CARRIER SYSTEM

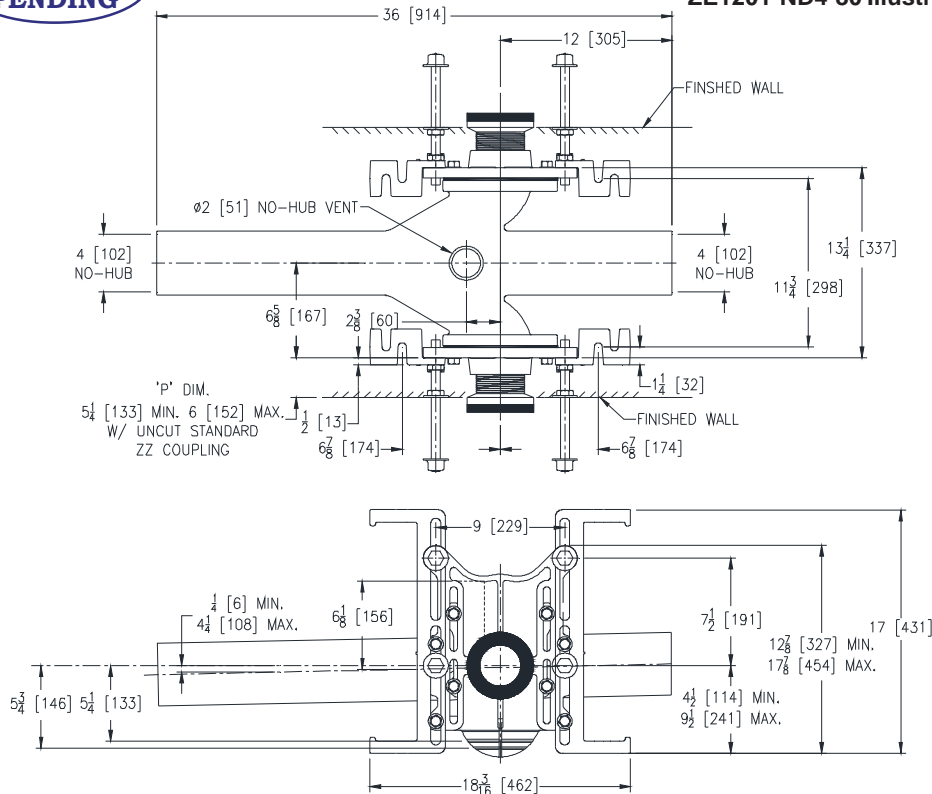
SPECIFICATION SHEET

TAG \_\_\_\_\_

Dimensional Data (inches and [mm]) are Subject to Manufacturing Tolerances and Change Without Notice

**PATENT  
 PENDING**

**ZE1201-ND4-80 Illustrated**



Product Number	Approx. Wt. lbs [kg]
ZE1201-ND4-80	103 [47]

**Note:**

1. Min. 'P' Dim. obtainable=2 [51] with cut standard coupling.
2. Feet bolted to floor using min. 1/2 [13] diameter anchors.

**ENGINEERING SPECIFICATION: ZURN ZE1201-ND4-80**

EZCarry® horizontal siphon jet water closet carrier system, with Dura-Coated cast iron double elongated fitting, 4" [102 mm] no-hub connections, 36" [914 mm] barrel for stall to stall direct connection, and extended 2" [51 mm] vent. Corrosion resistant, adjustable 3" [76 mm] diameter X 6" [152 mm] couplings with integral test caps, designed to increase flow velocity and line carry, and labor saving "Neo-Seal" bonded gaskets optimize flow performance while reducing installation steps. Complete system includes adjustable, gasketed faceplates; floor mounted 17" [432 mm] one piece RYK foot supports; fixture bolts, trim, and stud protectors. EZCarry® narrow wall system complies with all applicable requirements of ASME A112.6.1M up to a 500lbs [227kg] static load.

**OPTIONS** (Check/specify appropriate options)

\_\_\_ ZE1201-ND4-80 4 [102] No-Hub Back-to-Back Inlet (Double)

**PREFIXES**

\_\_\_ ZE D.C.C.I. System with Zurn ZZ Adjustable Coupling\*  
 \_\_\_ ZQE D.C.C.I. System with NPT Faceplate, Non-Adjustable Coupling

**SUFFIXES**

___ -A	Auxiliary Support Assembly (For 'P' Dim. Greater than 18 [457])	___ -F	Floor Mounted, Back Outlet Fixture Support
___ -CC	Corrosion Resistant Cast Iron Coupling (2-1/4 to 12 [57 to 305])	___ -G	Galvanized Cast Iron
___ -CE	EZ-Set™ Coupling (Available 6 [152], 12 [305] or longer when specified. Minimum length=5 [127])	___ -M	Auxiliary Foot Support (for 'P' Dim. 10 thru 18 [254 thru 457])
___ -CL	Custom Length Standard Coupling with Integral Test Cap (Specify Length 4, 8, 10, 12 [102, 203, 254, 305])	___ -VP	Vandal-Proof Trim
___ -CS	2-1/4 [57] Polymer Coupling with Integral Test Cap (ZZ Coupling Only)	___ -45	Finishing Frame for Siphon Jet System
		___ -50	Flush Valve Supply Support for Water Closets

\* Regularly furnished unless otherwise specified.

Zurn Industries, LLC | Specification Drainage Operation  
 1801 Pittsburgh Avenue, Erie, PA U.S.A. 16502 · Ph. 855-663-9876, Fax 814-454-7929  
 In Canada | Zurn Industries Limited  
 3544 Nashua Drive, Mississauga, Ontario L4V 1L2 · Ph. 905-405-8272, Fax 905-405-1292  
[www.zurn.com](http://www.zurn.com)

Rev. -  
 Date: 03/23/2018  
 C.N. No. 139771  
 Prod. | Dwg. No. ZE1201-ND4-80