



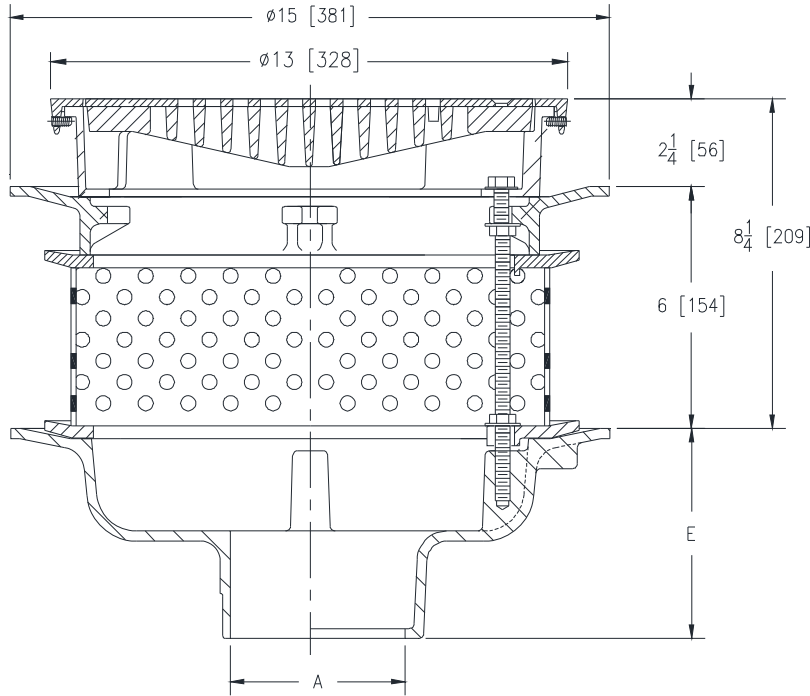
Z504-82

12 [305] HEAVY-DUTY** DRAIN W/ GREY ACID RESISTANT COATED CAST IRON, PERFORATED EXTENSION, & STAINLESS STEEL VENEER FRAME & GRATE

SPECIFICATION SHEET

TAG _____

Dimensional Data (inches and [mm]) are Subject to Manufacturing Tolerances and Change Without Notice



A- Pipe Size In. [mm]	Approx. Wt. Lbs. [kg]	Grate Open Area Sq. In. [cm ²]
3,4,6 [76,102,152]	50 [23]	30 [194]

ENGINEERING SPECIFICATION: ZURN Z504-82

12" [305 mm] Diameter top drain grey acid resisting epoxy coated cast iron body with bottom outlet, perforated extension, flat clamping collar, secondary seepage pan and combination membrane flashing clamp and frame for heavy-duty slotted grate** and stainless steel veneer frame and grate.

OPTIONS (Check/specify appropriate options)

PIPE SIZE

- 2, 3, 4, 6, 8 [51, 76,102,152,203]
- 2, 3, 4, 6, 8 [51, 76,102,152,203]
- 2, 3, 4, 6, 8 [51, 76,102,152,203]
- 2,3,4 [51,76,102]

(Specify size/type) **OUTLET**

- _____ IC Inside Caulk
- _____ IP Threaded
- _____ NH No-Hub
- _____ NL Neo-Loc

E BODY HT. DIM.

- 5-1/4 [133]
- 3-3/4 [95]
- 5-1/4 [133]
- 4-5/8 [117]

PREFIXES

- _____ ZS D.C.C.I. Body with Polished Stainless Steel Grate (Add 3/16 [5] to 2 [51] Dim.)*

SUFFIXES

- _____ -DG Duresist Grate
- _____ -F Extension Frame
- _____ -HT Square Hinged Grate
- _____ -SC Solid Cover
- _____ -T Square Top
- _____ -TS Top Secured With Slotted Screws
- _____ -VP Vandal Proof Secured Top

**Note: Heavy-Duty rated only if top frame is properly supported and encased in concrete

* Regularly furnished unless otherwise specified.