

# Z100-360



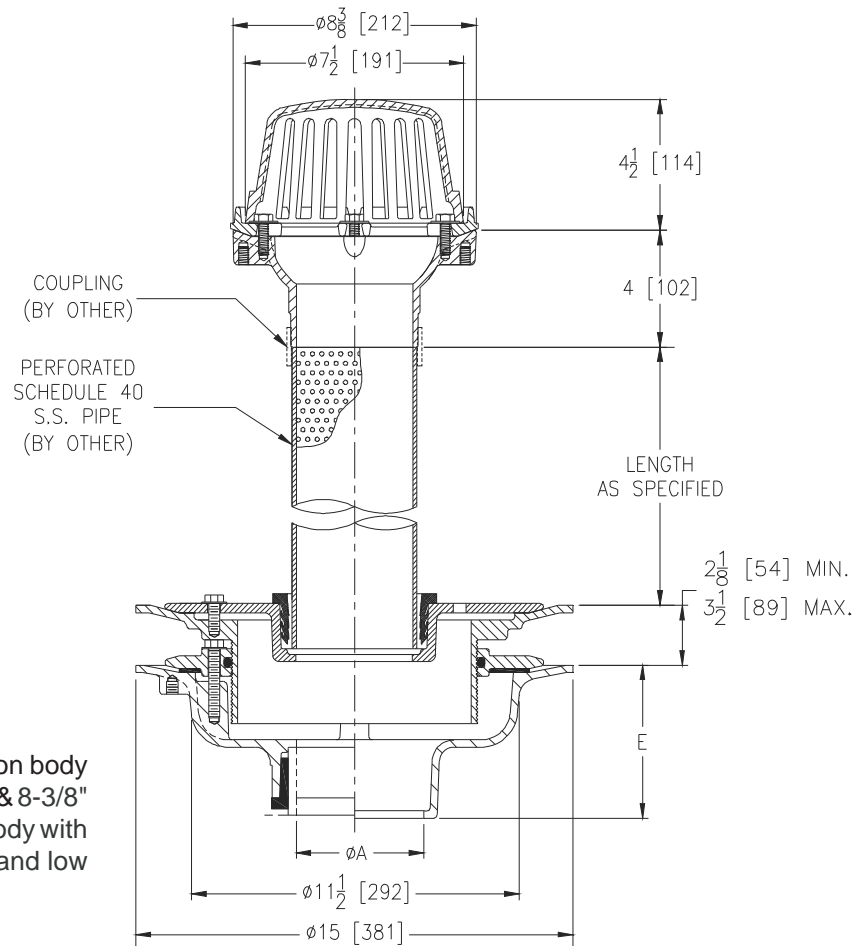
15 [381] DIAMETER MAIN ROOF DRAIN W/ ADJUSTABLE EXTENSION,  
CLAMP COLLAR WITH WEEP HOLES & 8-3/8 [213]  
DIAMETER ROOF DRAIN W/ LOW SILHOUETTE DOME

**SPECIFICATION SHEET**

TAG \_\_\_\_\_

Dimensional Data (inches and [ mm ]) are Subject to Manufacturing Tolerances and Change Without Notice

A- Pipe Size Inches [mm]	Minimum Weight Lbs. [kg]	Dome Open Area Sq. In. [cm <sup>2</sup> ]
2,3,4 [51,76,102]	40 [18]	43 [277]
6 [152]	41 [19]	
8 [203]	42 [19]	



## ENGINEERING SPECIFICATION: ZURN Z100-360

15" [381 mm] Diameter roof drain. Dura-Coated cast iron body with adjustable extension, clamp collar with weep holes & 8-3/8" [213 mm] Diameter roof drain, Dura-Coated cast iron body with combination membrane flashing clamp/gravel guard and low silhouette Poly-Dome.

### OPTIONS (Check/specify appropriate options)

#### PIPE SIZE

2,3,4,6,8 [51,76,102,152,203]  
2,3,4,6,8 [51,76,102,152,203]  
2,3,4,6,8 [51,76,102,152,203]  
2,3,4 [51,76,102]

#### (Specify size/type) OUTLET

\_\_\_\_\_ IC Inside Caulk  
\_\_\_\_\_ IP Threaded  
\_\_\_\_\_ NH No-Hub  
\_\_\_\_\_ NL Neo-Loc

#### E BODY HT. DIM.

5-1/4 [133]  
3-3/4 [95]  
5-1/4 [133]  
4-5/8 [117]

### PREFIXES

\_\_\_\_\_ Z D.C.C.I. Body with Poly-Dome (4-1/4 [108] Dome Height)\*

### SUFFIXES

_____ -AC	Angular Underdeck Clamp	_____ -SS	Stainless Mesh Screen Over Dome (Top Drain)
_____ -C	Underdeck Clamp	_____ -TC	Neo-Loc Test Cap Gasket (2,3,4 [51,76,102] NL Bottom Outlet Only)
_____ -DP	Top-Set® Deck Plate (Replaces both the -C and -R)	_____ -VP	Vandal-Proof Secured Top (Top Drain)
_____ -DR	Top-Set® Drain Riser	_____ -XJ	Vertical Expansion Joint (See Z190)
_____ -DX	Dex-o-tex Flange	_____ -90	90° Threaded Side Outlet Body (2 thru 6 [51 or 152])
_____ -E	Static extension 1 thru 4 (Specify Height)		
_____ -G	Galvanized Cast Iron		
_____ -R	Roof Sump Receiver		

\* Regularly furnished unless otherwise specified.