



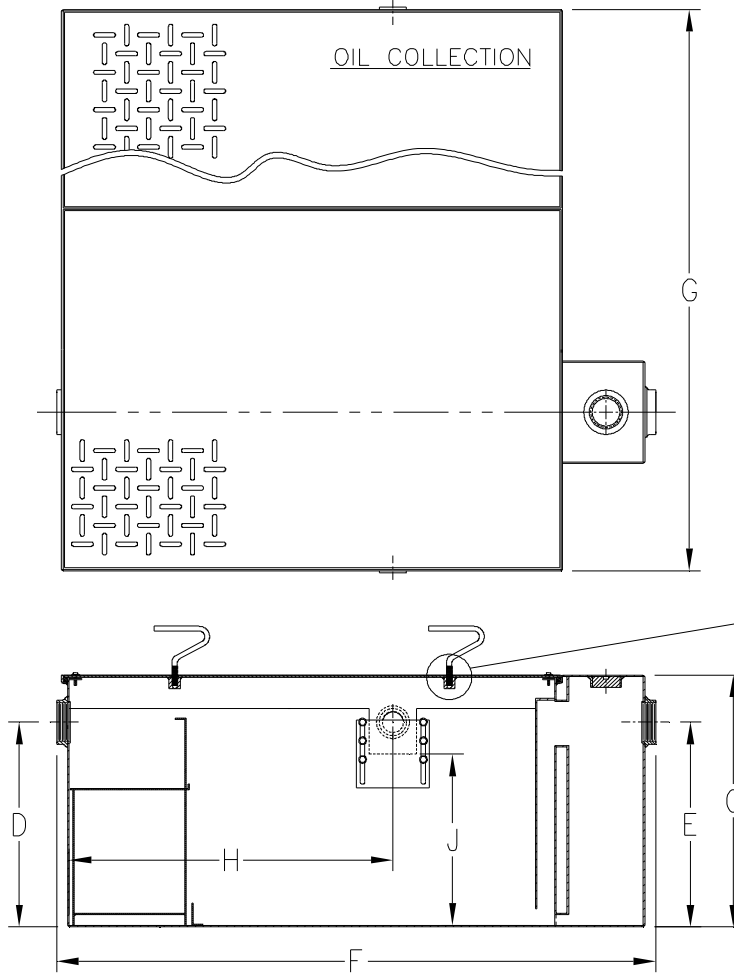
Z1188-ST-75

LARGE CAPACITY OIL INTERCEPTOR W/ INTEGRAL STORAGE TANK & 4 [102] INLET/OUTLET

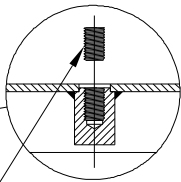
SPECIFICATION SHEET

TAG _____

Dimensional Data (inches and [mm]) are Subject to Manufacturing Tolerances and Change Without Notice



Flow Rate GPM [L] Min.	Oil Storage Tank Cap. Gal. [L]	No. of Covers	
		Trap	Tank
75 [284]	125 [473]	1	1


 — HEX HEAD SET SCREW—
 REMOVE SCREWS TO USE
 LIFT HANDLES, REPLACE
 SCREWS ONCE COVER IS
 IN PLACE AND HANDLES
 ARE REMOVED.

Flow Rate GPM [L] Min.	Inlet/ Outlet Size**	Water Capacity Gal. [L]	Approx. Wt. Lbs. [kg]	Dimensions in Inches					
				C	D/E	F	G	H	J
75 [284]	4 [102]	88 [333]	615 [279]	22 3/4 [578]	19 [483]	51 3/8 [1305]	65 3/8 [1661]	29 1/4 [743]	15 1/2 [394]

ENGINEERING SPECIFICATION: ZURN Z1188-ST-75 Acid Resistant Coated interior and exterior fabricated steel oil interceptor, with bronze cleanout plug and visible double wall trap seal, removable combination pressure equalizing/flow diffusing baffle and sediment bucket, oil draw-off, vent connections, secured gasketed non-skid cover, complete with flow control fitting and left hand integral storage tank. Regularly furnished with inlet and outlet in high position. Note: location of outlet from bottom of interceptor cannot be changed.

OPTIONS (Check/specify appropriate options)

PREFIXES

___ Z Acid Resistant Coated Fabricated Steel*

SUFFIXES

- ___ -E Integral Acid Resistant Coated interior and exterior fabricated steel extension section. (Specify 'C' Dim. required) for recessed installation.
- ___ -K Anchor flange 1 3/4 [44] down from top and 2 [51] wide. A 3 [76] minimum extension height is required when anchor flange (-K) option is specified. (Specify 'C' Dim. height required.)
- ___ -KC Anchor flange 1 3/4 [44] down from top and 2 [51] wide with clamp collar.
- ___ -STR Storage tank on right hand side when facing the inlet.

REV.	DATE: 3/26/07	C.N. NO. 96396
DWG. NO. P-15399		PRODUCT NO. Z1188-ST-75

*REGULARLY FURNISHED UNLESS OTHERWISE SPECIFIED