



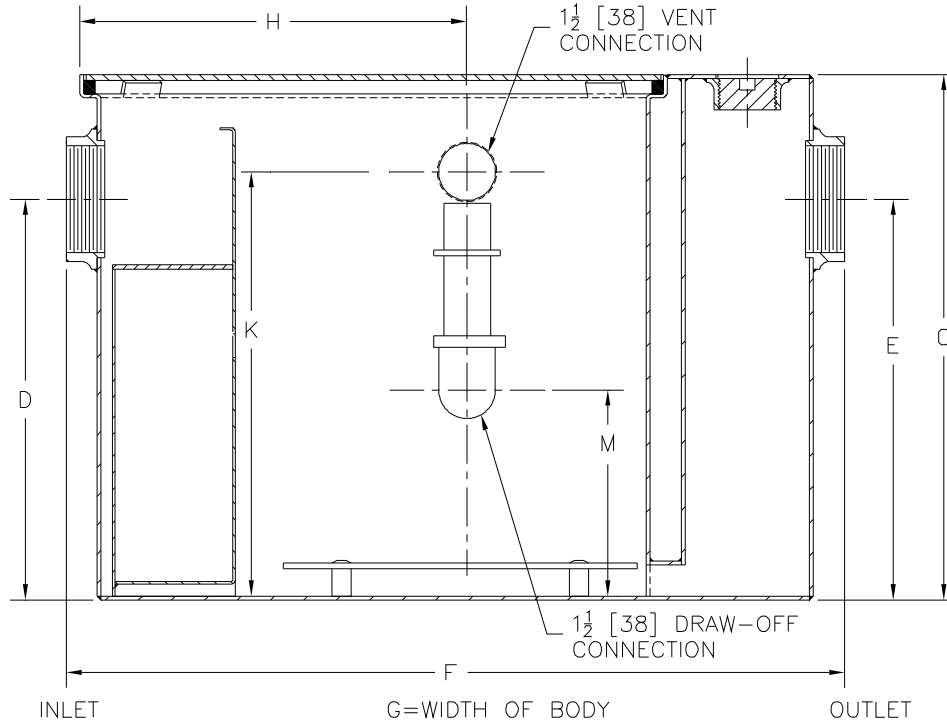
Z1186-127

CUSTOM OIL INTERCEPTOR WITH INLET / OUTLET AT 26 [660]

SPECIFICATION SHEET

TAG _____

Dimensional Data (inches and [mm]) are Subject to Manufacturing Tolerances and Change Without Notice



Size	Inlet/ Outlet Size **	Flow Rate GPM [L]	Water Cap. Gal. [L]	Approx. Wt. Lbs. [kg]	Dimensions In Inches						
					C	D/E	F	G	H	K	M
700	3 [76]	35 [132]	65 [246]	210 [95]	33 1/4 [845]	26 [660]	32 1/4 [819]	28 3/4 [730]	16 3/8 [416]	30 1/4 [768]	18 3/16 [462]

ENGINEERING SPECIFICATION: ZURN Z1186-127 Acid Resistant Coated interior and exterior fabricated steel oil interceptor, bronze cleanout plug and visible double wall trap seal, removable combination pressure equalizing/flow diffusing baffle and sediment bucket, horizontal baffle, adjustable oil draw-off and vent connections either side, secured gasketed non-skid cover, complete with flow control fitting. Regularly furnished with inlet and outlet in high position.

Note: Location of outlet from bottom of interceptor cannot be changed.

OPTIONS (Check/specify appropriate options)

PREFIXES

___ Z Acid Resistant Coated Fabricated Steel*

SUFFIXES

___ -K Anchor flange 1 3/4 [44] down from top and 2 [51] wide. A 3 [76] minimum extension height is required when anchor flange (-K) option is specified. (Specify 'C' Dim. height required.)

___ -KC Anchor flange 1 3/4 [44] down from top and 2 [51] wide with clamp collar.

** Inlet and outlet sizes shown indicate standard operating sizes and flow control setting. Size #700 will have 4 [102] connections reduced to 3 [76] as standard.

REV. A	DATE: 7/15/08	C.N. NO. 98806
DWG. NO. P-15554 PRODUCT NO. Z1186-127		

*REGULARLY FURNISHED UNLESS OTHERWISE SPECIFIED