



Z626-76

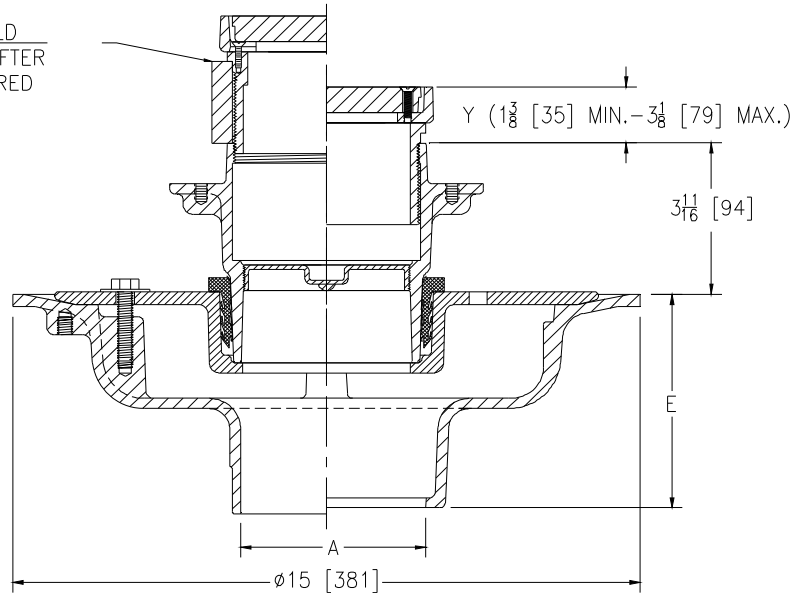
ADJUSTABLE ISOLATION DECK CLEANOUT WITH ANCHOR FLANGE

SPECIFICATION SHEET

TAG _____

Dimensional Data (inches and [mm]) are Subject to Manufacturing Tolerances and Change Without Notice

THREAD SHIELD
REMOVABLE AFTER
SLAB IS POURED



A Pipe Size	Approx. Wt. Lbs. [kg]
2, 3, 4 [51, 76, 102]	44 [20]
5, 6 [127, 152]	

ENGINEERING SPECIFICATION: ZURN Z626-76

Adjustable Isolation Deck Cleanout with Anchor Flange, Dura-Coated cast iron upper and lower bodies, clamp collar with weep holes, neoprene flex gasket, ABS cleanout plug, isolation ferrule with 5 [127] diameter round Dura-Coated cast iron adjustable cleanout top.

OPTIONS (Check/specify appropriate options)

PIPE SIZE	(Specify size/type)	OUTLET	'E' BODY HT. DIM.
2 thru 6 [51 thru 152]	_____	IC Inside Caulk	5-1/4 [133]
2 thru 4, 6 [51 thru 102, 152]	_____	IG Inside Gasket	5-1/4 [133]
2 thru 6 [51 thru 152]	_____	IP Threaded	3-3/4 [95]
2 thru 6 [51 thru 152]	_____	NH No-Hub	5-1/4 [133]
2 thru 4 [51 thru 102]	_____	NL Neo-Loc	4-5/8 [117]

PREFIXES

- _____ Z Dura Coated Cast Iron*
- _____ ZB D.C.C.I. w/ Polished Bronze Light-Duty Top
(Deduct 1/2 [13] from 'Y' Dim.)
- _____ ZN D.C.C.I. w/ Polished Nickel Bronze Light-Duty Top
(Deduct 1/2 [13] from 'Y' Dim.)
- _____ ZS D.C.C.I. w/ Polished Stainless Steel Heavy-Duty Top
(Add 3/16 [5] to 'Y' Dim.)

SUFFIXES

- _____ -BP Bronze Plug
- _____ -C Underdeck Clamp (Lower Body)
- _____ -G Galvanized Cast Iron
- _____ -HD Heavy Duty Veneer top (Add 1/8" to 'Y' Dim.)
- _____ -KC Clamp Collar on Anchor Flange
- _____ -LH Less Weep Holes in Clamp Collar
- _____ -R Sump Receiver (Lower Body)
- _____ -VP Vandal-Proof Secured Top

REV. A	DATE: 6/2/11	C.N. NO. 121364
DWG. NO. 306082	PRODUCT NO. Z626-76	

*REGULARLY FURNISHED UNLESS OTHERWISE SPECIFIED

ZURN INDUSTRIES, LLC. ♦ SPECIFICATION DRAINAGE OPERATION ♦ 1801 Pittsburgh Ave. ♦ Erie, PA 16514

Phone: 814/455-0921 ♦ Fax: 814/454-7929 ♦ World Wide Web: www.zurn.com

In Canada: ZURN INDUSTRIES LIMITED ♦ 3544 Nashua Drive ♦ Mississauga, Ontario L4V1L2 ♦ Phone: 905/405-8272 Fax: 905/405-1292