

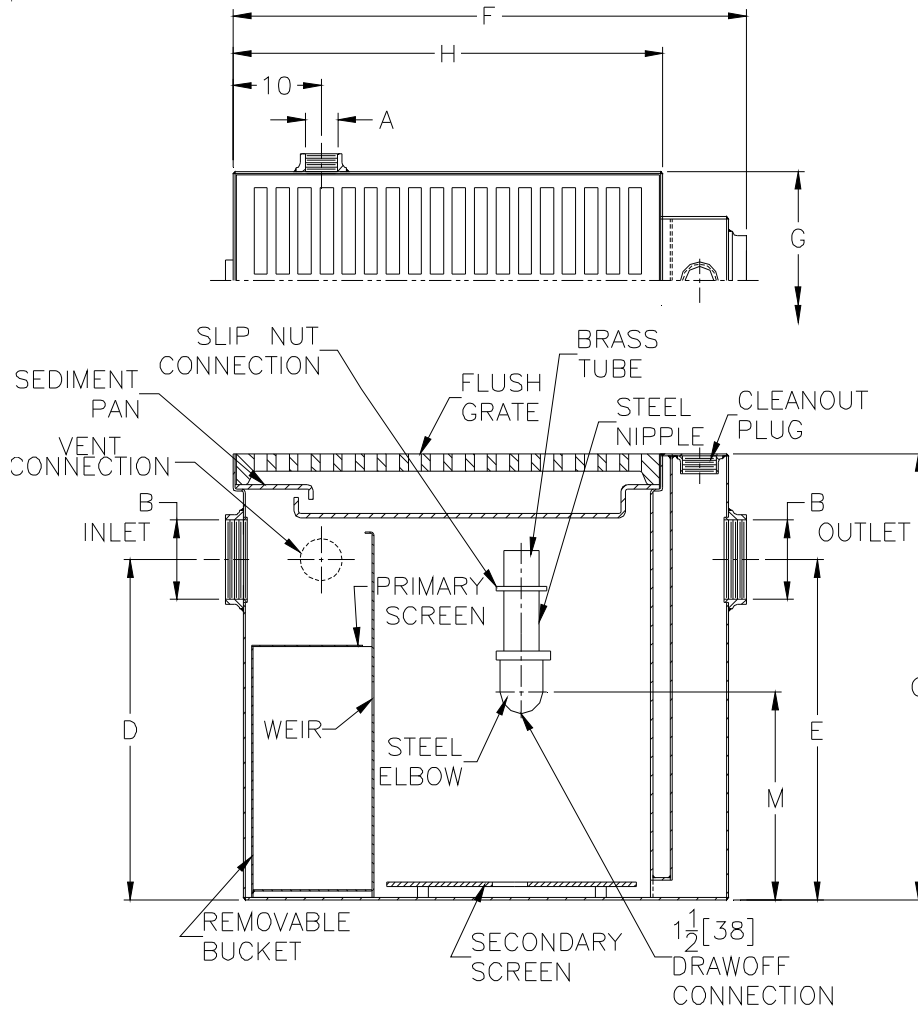


Z1189-84

OIL/SEDIMENT INTERCEPTOR W/ADJUSTABLE OIL DRAWOFF

TAG _____

Dimensional Data (inches and [mm]) are Subject to Manufacturing Tolerances and Change Without Notice



Size	Sludge Capacity Lbs. [kg]	Grate Open Area [cm ²]	No. of Grates	No. of Plans	Approx. Wt. Lbs. [kg]	A Vent Size	B Pipe Size	Dimension In Inches						
								C	D	E	F	G	H	M
200	200 [91]	393 [2535]	4	1	410 [186]	2 [51]	4 [75]	41 [1041]	35 [890]	30 [762]	41 1/8 [1044]	24 3/8 [619]	36 3/8 [924]	24 [610]
300	300 [136]	524 [3380]	4	1	500 [227]	2 [51]	4 [75]	41 [1041]	35 [890]	30 [762]	53 1/8 [1349]	24 3/8 [619]	48 3/8 [1229]	24 [610]

ENGINEERING SPECIFICATION: ZURN Z1189-84 Acid Resistant Coated fabricated steel interceptor, with heavy duty Dura-Coated cast iron grate, bronze cleanout plug, visible double-wall trap seal, removable sediment bucket, horizontal baffle, adjustable oil drawoff and internal vent connection.

PREFIXES

___ Z- Acid Resistant Coated Fabricated Steel*

SUFFIXES

- ___ -DG Duresist Grate
- ___ -E Acid Resistant Coated Interior and exterior fabricated steel extension section. (Specify 'C' Dim. required)
- ___ -K Anchor flange 1 3/4 [44] down from top and 2 [51] wide.
- ___ -KC Anchor flange 1 3/4 [44] down from top and 2 [51] wide with seepage holes and clamp collar
- ___ -SC Heavy-duty solid traffic cover rated at (10,000 lbs. [4536kg.] maximum safe live load)

REV.	DATE: 10/11/10	C.N.NO. 111826
DWG. NO. 302793		PRODUCT NO. Z1189-84

*REGULARLY FURNISHED UNLESS OTHERWISE SPECIFIED