



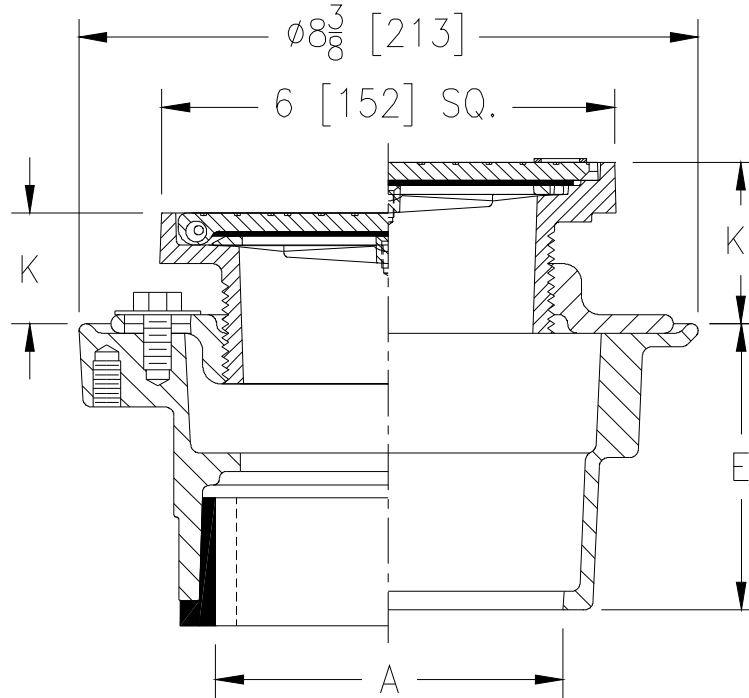
# Z415SC-GC-LR

BODY ASSEMBLY W/ "TYPE SC" STRAINER &  
GASKETED COVER WITH LIFT RING

SPECIFICATION SHEET

TAG \_\_\_\_\_

Dimensional Data (inches and [ mm ]) are Subject to Manufacturing Tolerances and Change Without Notice



Dimensions in In [mm]					Approx. Wt. Lbs. [kg]
A - Pipe Size	K		K'		
	Min.	Max.	Min.	Max.	
2,3,4 [51,76,102]	1-3/16 [30]	1-15/16 [49]	1-3/4 [44]	2-7/8 [73]	16 [7]

**ENGINEERING SPECIFICATION: ZURN ZN415SC-GC-LR**  
Floor and shower drain, Dura-Coated cast iron body with bottom outlet, combination invertible membrane clamp, adjustable collar with "TYPE SC" polished nickel bronze strainer with flashing clamp device and adjustable strainer top with gasketed solid scoriated hinged cover and lift ring.

**OPTIONS** (Check/specify appropriate options)

**PIPE SIZE**

(Specify size/type) **OUTLET**

**'E' BODY HT. DIM.**

2,3,4 [51,76,102]

\_\_\_ NH No-Hub

3-13/16 [97]

2,3,4 [51,76,102]

\_\_\_ NL Neo-Loc

3-7/8 [98]

**PREFIXES**

- \_\_\_ ZB D.C.C.I. Body Assembly w/Polished Bronze Top
- \_\_\_ ZN D.C.C.I. Body Assembly w/Polished Nickel Bronze Top\*

**SUFFIXES**

- \_\_\_ -AR Acid Resisting Epoxy Coated Cast Iron
- \_\_\_ -CP Chrome-Plated Top
- \_\_\_ -G Galvanized Cast Iron
- \_\_\_ -P Trap Primer Connection (Specify 1/2 [13] or 3/4 [19])
- \_\_\_ -SA Stabilizer Assembly (See Z1035)
- \_\_\_ -SQ Stabilizer Q-deck (See Z1035-Q)
- \_\_\_ -SR Stabilizer Ring
- \_\_\_ -TC Neo-Loc Test Cap Gasket  
(2,3,4 [51,76,102] NL Outlet Only)
- \_\_\_ -TS Top Secured with Slotted Screw
- \_\_\_ -U 1-3 [25-76] High Extension Adapter
- \_\_\_ -V Backwater Valve
- \_\_\_ -VP Vandal-Proof Secured Top
- \_\_\_ -Y Sediment Bucket

\* Regularly furnished unless otherwise specified.