



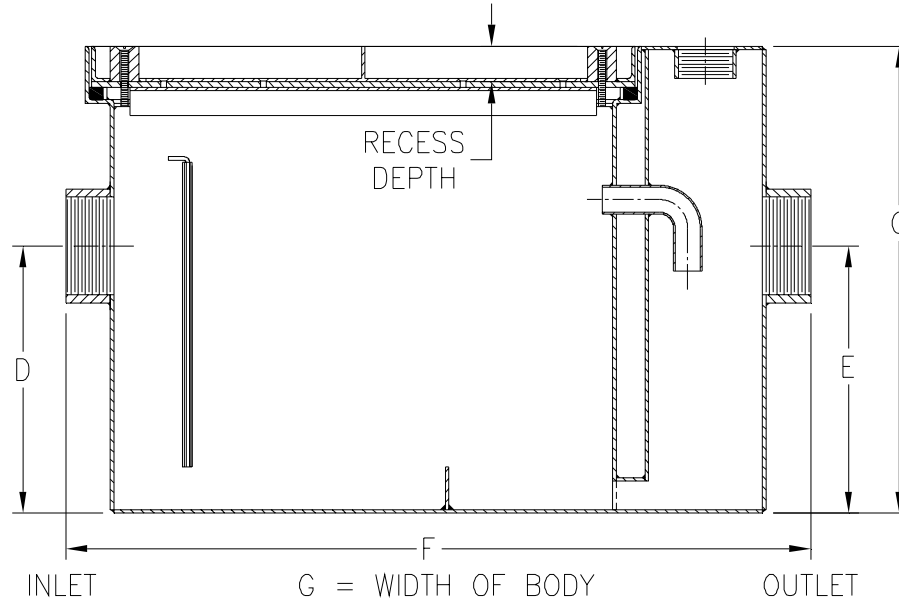
# Z1170-T

## GREASE INTERCEPTOR WITH COVER RECESSED FOR TILE / TERRAZZO

SPECIFICATION SHEET

TAG \_\_\_\_\_

Dimensional Data (inches and [ mm ]) are Subject to Manufacturing Tolerances and Change Without Notice



Size	Inlet/ Outlet Size**	Flow Rate G.P.M. [L]	Capacity		Approx. Wt. Lbs. [kg.]	Dimensions in Inches				
			Water Gal. [L]	Grease Lbs. [kg]		C for 1/8 [3] Recess	C for 3/4 [19] or 1 1/4 [32] Recess	D/E	F	G
100	2 [51]	4 [15]	3 [11]	8 [4]	57 [26]	10 [254]	13 [330]	7 1/4 [184]	20 3/8 [518]	9 7/8 [251]
200	2 [51]	7 [26]	5 [19]	14 [6]	68 [31]	11 1/4 [286]	14 1/4 [362]	8 1/8 [206]	21 3/4 [552]	11 7/8 [302]
300	2 [51]	10 [38]	6 [23]	20 [9]	81 [37]	11 3/4 [298]	14 3/4 [375]	8 1/4 [210]	25 1/8 [638]	14 [356]
400	3 [76]	15 [57]	10 [38]	30 [14]	98 [44]	13 3/8 [340]	16 3/8 [416]	9 3/8 [238]	27 1/8 [689]	16 3/4 [425]
500	3 [76]	20 [76]	16 [60]	40 [18]	124 [56]	15 [381]	18 [457]	11 3/4 [298]	30 [762]	17 1/4 [438]
600	3 [76]	25 [94]	21 [79]	50 [23]	149 [68]	17 [432]	20 [508]	12 1/2 [318]	32 1/4 [819]	19 7/8 [505]
700	3 [76]	35 [132]	30 [113]	70 [32]	176 [80]	18 3/4 [476]	21 3/4 [552]	14 1/4 [362]	34 1/8 [867]	22 1/2 [572]
800	3 [76]	50 [189]	40 [151]	100 [45]	205 [93]	21 1/2 [546]	24 1/2 [622]	16 [406]	36 [914]	24 1/2 [622]

**ENGINEERING SPECIFICATION:** ZURN Z1170-T Acid Resistant Coated interior and exterior fabricated steel grease interceptor, PDI, rated at \_\_\_\_ GPM and \_\_\_\_ Lbs. grease capacity, with internal air relief by-pass, bronze cleanout plug, removable pressure equalizing/flow diffusing inlet baffle, fixed bottom outlet baffle, and visible double wall trap seal. Gasketed cover recessed for tile/terrazzo complete with removable T-handles and Z1108 flow control fitting. Regularly furnished with a high inlet and outlet connection. Note: Location of outlet from bottom of interceptor cannot be changed.

**PREFIXES**

- \_\_\_ Z Acid Resistant Coated Fabricated Steel\*
- \_\_\_ ZS All Type 304 Fabricated Stainless Steel

**SUFFIXES**

- \_\_\_ -DI Dual High/Low Inlet.
- \_\_\_ -E Acid Resistant Coated Interior and exterior fabricated steel extension section. (Specify 'C' Dim. required) for recessed installation.
- \_\_\_ -K Anchor flange 1 3/4 [44] down from top and 2 [51] wide. A 3 [76] minimum extension height is required when anchor flange (-K) option is specified. (Specify 'C' Dim. height required.)
- \_\_\_ -KC Anchor flange 1 3/4 [44] down from top and 2 [51] wide with clamp collar. A 3 [76] minimum extension height is required when anchor flange (-K) option is specified.
- \_\_\_ -L Angle type (Z1108-L) flow control device with plunger.

\*\* Inlet and outlet sizes shown indicate standard operating sizes and flow control setting. Size #300 will have 3 [76] connections reduced to 2 [51] and sizes #600 thru #800 will have 4 [102] connections reduced to 3 [76] as standard. If changed, flow control must be adjusted accordingly.

<b>REV.</b>	<b>DATE: 8/14/07</b>	<b>C.N. NO. 97141</b>
<b>DWG. NO. 83377</b>		<b>PRODUCT NO. Z1170-T</b>

\*REGULARLY FURNISHED UNLESS OTHERWISE SPECIFIED