



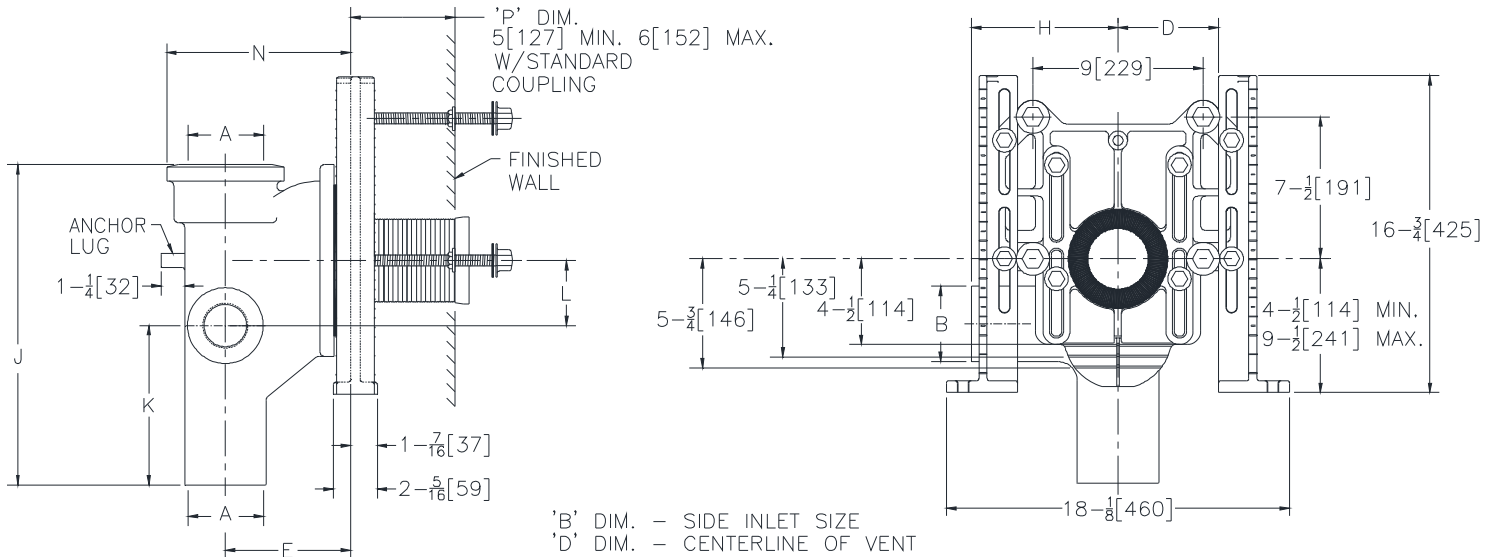
Z1204-1H

ADJUSTABLE VERTICAL SIPHON JET-HUB & SPIGOT WITH SIDE INLET

SPECIFICATION SHEET

TAG _____

Dimensional Data (inches and [mm]) are Subject to Manufacturing Tolerances and Change Without Notice



Note:

1. Min. 'P' Dim. Obtainable = 2 [51] with cut standard coupling.
2. Feet bolted to floor using min. 1/2 [13] diameter bolts and back slots on carrier feet.
3. Back anchor foot required for secure installation.

Product No.	Dimensions in Inches [mm]										Approx. Wt. Lbs [kg]
	A	B	D	E	H	J	K	L		N	
								Min.	Max.		
Z1204-1HL4/1HR4	4 [102]	4 [102]	5 [127]	6-5/8 [168]	7-1/2 [191]	24 [610]	15-1/2 [394]	1-5/8 [41]	5-5/8 [143]	9-3/4 [248]	107 [49]

ENGINEERING SPECIFICATION: ZURN Z1204-1H()4

Adjustable, vertical siphon jet water closet "Rigid System" with 4" [102mm] Hub and Spigot connections. Complete with Dura-Coated cast iron right or left hand fitting, with 4" [102mm] side inlet, 2" [51mm] vent, adjustable gasketed face plate, universal floor mounted foot supports, corrosion resistant adjustable polymer coupling with integral test cap, fixture bolts, trim, stud protectors, rear anchor tie down, and bonded "Neo-Seal" gasket.

PRODUCT/DEFINITION

- ___ Z1204-1HR4 Hub & Spigot Stack, Single Inlet, (1) 4 [102] Right Hand Auxiliary Inlet, 2 [51] Right Hand Vent.
- ___ Z1204-1HL4 Hub & Spigot Stack, Single Inlet, (1) 4 [102] Left Hand Auxiliary Inlet, 2 [51] Right Hand Vent.

PREFIXES

- ___ Z D.C.C.I. System with Zurn "ZZ" Adjustable Coupling*
- ___ ZQ D.C.C.I. System with NPT Face Plate, Non Adjustable Coupling

SUFFIXES

- ___ -A Auxiliary Support Assembly (for 'P' Dim. Greater Than 18 [457])
- ___ -B Blowout Type Fixture Support
- ___ -CC Corrosion Resistant Cast Iron Coupling (6 - 12 [152 - 305])
- ___ -CL Coupling Length Other than Standard 6 [152] (Specify Length Required)
- ___ -F Floor Mounted Back Outlet, Fixture Support
- ___ -JL 2 [51] Left Hand Auxiliary Inlet
- ___ -JR 2 [51] Right Hand Auxiliary Inlet
- ___ -M Auxiliary Foot Support (for 'P' Dim. 10 - 18 [254 - 457])
- ___ -PF Pre-Fab Foot
- ___ -PS Pre-Fab Slotted Foot
- ___ -RYK Unistrut Pre-Fab Foot
- ___ -VP Vandal-Proof Trim
- ___ -X3 3 [76] Foot Extension (See Z1200-FT-EXT-3)
- ___ -X4 4 [102] Foot Extension (See Z1200-FT-EXT-4)
- ___ -45 Finishing Frame for Siphon Jet System (See Z1200-FINFRAME-SJ)
- ___ -50 Flush Valve Supply Support for W.C. (See Z1200-SPLY-SPRT-WC)

* Regularly furnished unless otherwise specified.