



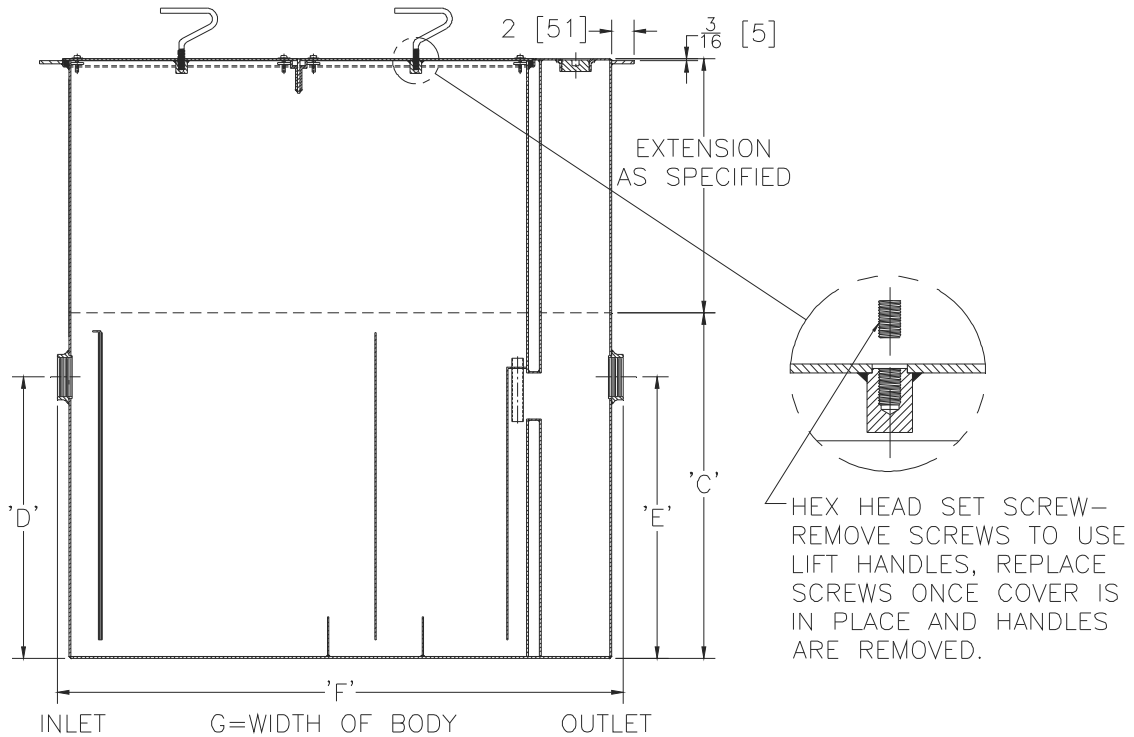
# Z1172-190

## LARGE CAPACITY GREASE INTERCEPTOR W/ EXTENSION AND LIQUID MEMBRANE FLANGE

SPECIFICATION SHEET

TAG \_\_\_\_\_

Dimensional Data (inches and [ mm ]) are Subject to Manufacturing Tolerances and Change Without Notice



\*\* Location of inlet must be maintained at the 'D' dimension listed for each size.

Size	Inlet/Outlet Size**	flow rate GPM [LPM]	Capacity		No. of Covers	Approx Wt. lbs [kg]	Dimensions in In [mm]			
			Water Gal [L]	Grease lbs [kg]			C#	D/E	F	G
900	4 [102]	75 [284]	65 [249]	150 [68]	1	316 [143]	22-3/4 [578]	19 [483]	36 [914]	28-5/8 [727]
1000		100 [378]	110 [416]	200 [91]		408 [185]	27 [686]	23-1/2 [597]	42-3/4 [1086]	33-5/8 [854]
1300		200 [756]	270 [1021]	400 [182]	2	1016 [461]	35-1/2 [902]	29-7/8 [759]	61 [1549]	43-5/8 [1108]

### ENGINEERING SPECIFICATION: ZURN Z1172-190

Large capacity Acid Resistant Coated interior and exterior fabricated steel grease interceptor, rated at \_\_\_ GPM and \_\_\_ Lbs. grease capacity, with internal air relief by-pass, bronze cleanout plug and visible double wall trap seal with removable pressure equalizing/flow diffusing baffle, liquid membrane flange, and sediment tray. Gasketed non-skid secured cover with removable lift handle, complete with flow control fitting. Regularly furnished with inlet and outlet in high position.

### OPTIONS (Check/specify appropriate options)

#### PREFIXES

- \_\_\_ Z Acid Resistant Coated Fabricated Steel\*
- \_\_\_ ZS All type 304 Fabricated Stainless Steel.

#### SUFFIXES

- \_\_\_ -AL Aluminum Cover
- \_\_\_ -HD Heavy duty traffic cover rated at 10,000 lbs. [4536 Kg.] maximum safe live load.
- \_\_\_ -L Angle type (Z1108-L) flow control device.

\* Regularly furnished unless otherwise specified.