



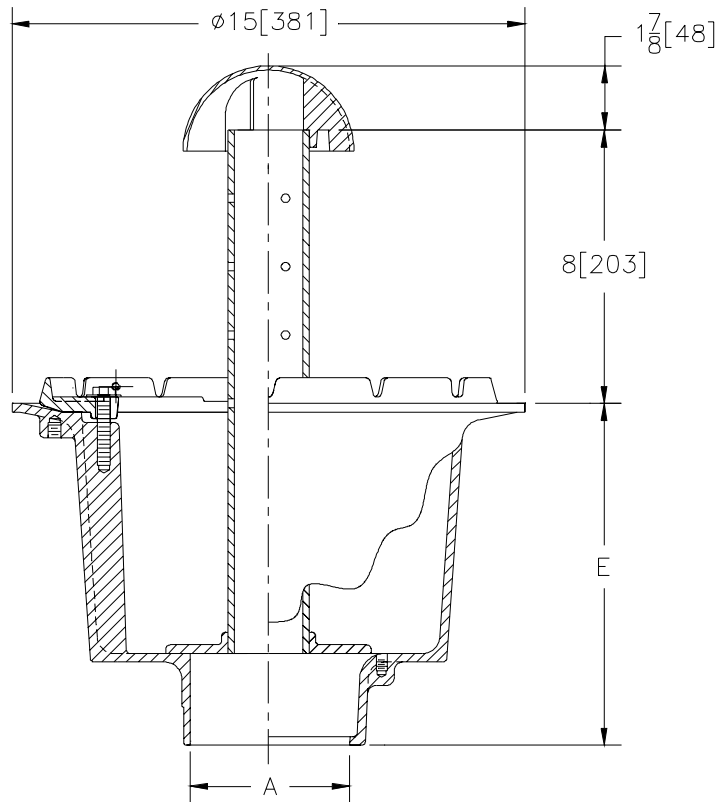
Z-349-76

DEEP SUMP TERRACE PLANTING AREA DRAIN

SPECIFICATION SHEET

TAG _____

Dimensional Data (inches and [mm]) are Subject to Manufacturing Tolerances and Change Without Notice



A-Pipe Size Inches	Approx. Wt. Lbs. [kg]
3-4[75-100]	46[21]
6-8[150-200]	

ENGINEERING SPECIFICATION: ZURN Z-349-76 Terrace Planting area Drain, Dura-Coated cast iron deep sump body, perforated overflow standpipe with dome and combination membrane flashing clamp/gravel guard.

OPTIONS (Check/specify appropriate options)

PIPE SIZE	(Specify size/type)	OUTLET	'E' BODY HT. DIM.
3,4,6[75,100,150]	_____	IC Inside Caulk	10 [254]
3,4,6,8[75,100,150,200]	_____	NH No-Hub	10 [254]

PREFIXES

_____ Z- D.C.C.I Body w/Standpipe and Dome*

SUFFIXES

- _____ -C Underdeck Clamp
- _____ -G Galvanized Cast Iron
- _____ -SS Stainless Mesh Screen Over Standpipe

REV.	DATE: 03/07/96	C.N. NO. 74318
DWG. NO. P-14304 PRODUCT NO. Z-349-76		

*REGULARLY FURNISHED UNLESS OTHERWISE SPECIFIED