

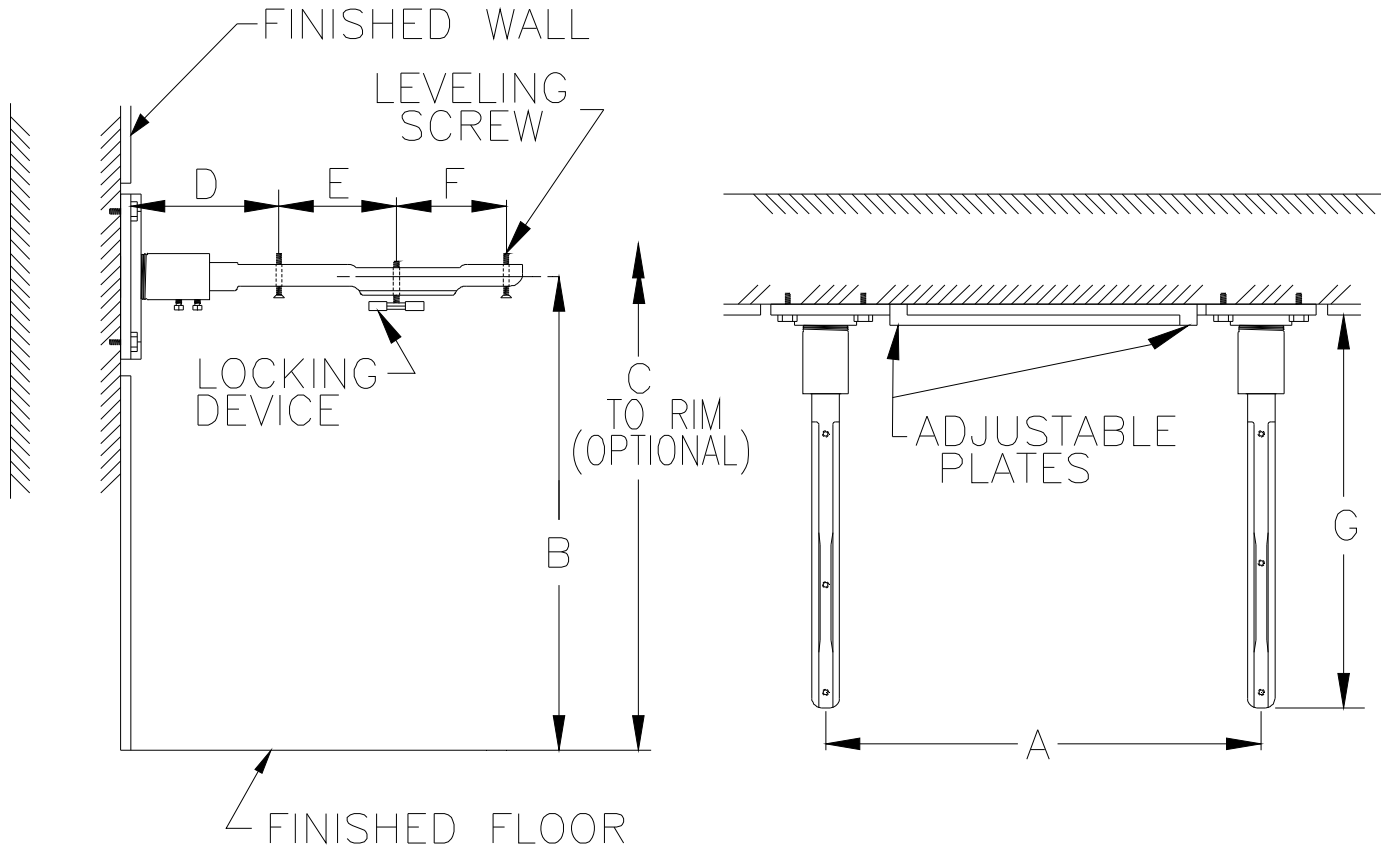


Z1254-75

ADJUSTABLE CONCEALED ARM SYSTEM WALL SUPPORTED

TAG _____

Dimensional Data (inches and [mm]) are Subject to Manufacturing Tolerances and Change Without Notice



Product No.	Approx. Wt. Lbs. [kg]
Z1254-75	18 [8]

ENGINEERING SPECIFICATION: ZURN Z1254-75 Lavatory support with concealed arms. Complete with adjustable Dura-Coated support plates with arm sleeves, concealed arms, and mounting fasteners.

OPTIONS (Check/specify appropriate options)

PREFIXES

___ Z Dura-Coated System with Concealed Arms*

SUFFIXES

- ___ -E2 Concealed Arm Escutcheons 2 [51] Long
- ___ -E4 Concealed Arm Escutcheons 4 [102] Long
- ___ -E6 Concealed Arm Escutcheons 6 [152] Long
- ___ -SL Sleeve Length Over 4 [101] (Specify Length)
- ___ -79 Paraplegic Rough-in

*REGULARLY FURNISHED UNLESS OTHERWISE SPECIFIED

REV.	DATE: 09/03/10	C.N. NO. 111666
DWG. NO. 302216		PRODUCT NO. Z1254-75