



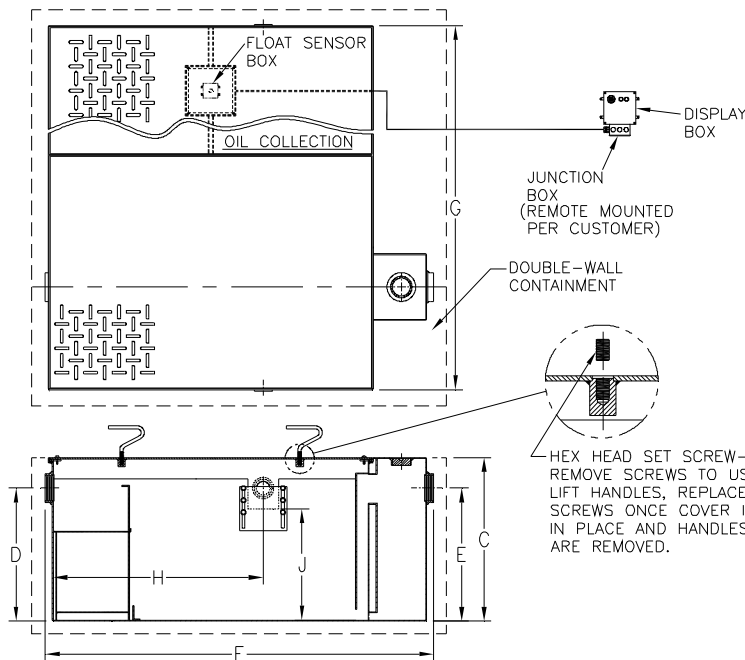
Z1188-ST-81

SPECIFICATION SHEET

LG. CAPACITY OIL INTERCEPTOR W/INTEGRAL STORAGE TANK, DOUBLE WALL CONTAINMENT TANK & HIGH LEVEL SENSOR

TAG _____

Dimensional Data (inches and [mm]) are Subject to Manufacturing Tolerances and Change Without Notice



Flow Rate GPM [L] Min.	Oil Storage Tank Cap. Gal. [L]	No. of Covers	
		Trap	Tank
75 [284]	125 [473]	1	1
100 [379]	250 [946]	1	1
125 [473]	250 [946]	2	2
150 [568]	250 [946]	2	2
200 [757]	400 [1514]	2	2
250 [946]	400 [1514]	2	2
300 [1136]	400 [1514]	2	2
350 [1325]	700 [2650]	2	2
400 [1514]	700 [2650]	2	2
450 [1703]	700 [2650]	2	2
500 [1893]	700 [2650]	2	2

Flow Rate GPM [L] Min.	Inlet/ Outlet Size**	Water Capacity Gal. [L]	Approx. Wt. Lbs. [kg]	Dimensions in Inches					
				C	D/E	F	G	H	J
75 [284]	3 [76]	88 [333]	615 [279]	22 3/4 [578]	18 1/2 [470]	51 3/8 [1305]	65 3/8 [1661]	29 1/4 [743]	15 1/2 [394]
100 [379]	3 [76]	159 [602]	800 [363]	27 [686]	23 [584]	60 3/8 [1534]	82 3/8 [2092]	35 1/4 [895]	19 3/4 [502]
125 [473]	3 [76]	208 [787]	1450 [658]	30 1/8 [765]	24 1/2 [622]	64 1/4 [1632]	84 5/8 [2150]	36 [914]	21 [533]
150 [568]	4 [102]	235 [890]	1640 [743]	30 3/4 [781]	25 1/4 [641]	68 1/4 [1734]	82 3/4 [2102]	38 11/16 [983]	21 5/8 [549]
200 [757]	4 [102]	333 [1261]	1950 [885]	35 1/2 [901]	29 7/8 [759]	71 3/8 [1813]	92 3/4 [2356]	43 1/2 [1105]	26 3/8 [670]
250 [946]	5 [127]	445 [1685]	2650 [1202]	41 [1041]	36 [914]	75 1/2 [1918]	95 5/8 [2429]	40 3/4 [1035]	32 1/2 [825]
300 [1136]	5 [127]	664 [2514]	3400 [1542]	46 1/4 [1175]	39 5/8 [1006]	82 3/8 [2092]	92 3/8 [2346]	48 1/16 [2221]	37 3/4 [959]
350 [1325]	6 [152]	1006 [3808]	4000 [1814]	50 1/2 [1283]	43 7/8 [1114]	103 1/8 [2619]	104 3/4 [2661]	61 15/16 [1573]	40 3/8 [1026]
400 [1514]	6 [152]	1266 [4792]	4700 [2132]	54 1/4 [1378]	47 5/8 [1210]	110 1/8 [2797]	102 5/8 [2607]	66 9/16 [1691]	44 1/8 [1121]
450 [1703]	6 [152]	1575 [5962]	5200 [2359]	55 1/4 [1403]	48 5/8 [1235]	123 1/8 [3127]	102 7/8 [2613]	75 1/4 [1911]	44 5/8 [1133]
500 [1893]	6 [152]	1695 [6416]	5500 [2495]	57 1/4 [1454]	51 5/8 [1311]	124 1/8 [3153]	103 5/8 [2632]	73 15/16 [1878]	48 1/8 [1222]

ENGINEERING SPECIFICATION: ZURN Z1188-ST-81

Acid Resistant Coated interior and exterior fabricated steel oil interceptor with fiberglass sensor box containing an electronic oil level sensor, fiberglass display box with audio and visual alarms and junction box. Complete with bronze cleanout plug and visible double wall trap seal, removable combination pressure equalizing/flow diffusing baffle and sediment bucket, oil draw-off, vent connections, secured gasketed non-skid cover, flow control fitting and left hand integral storage tank and double wall containment tank. Regularly furnished with inlet and outlet in high position. Note: location of outlet from bottom of interceptor cannot be changed.

OPTIONS (Check/specify appropriate options)

PREFIXES

___ Z Acid Resistant Coated Fabricated Steel*

SUFFIXES

- ___ -E Integral Acid Resistant Coated interior and exterior fabricated steel extension section. (Specify 'C' Dim. required) for recessed installation.
- ___ -HD Heavy-Duty Traffic Cover rated at 10,000 lbs. [4536 kg.] maximum safe live load.
- ___ -K Anchor flange 1 3/4 [44] down from top and 2 [51] wide. A 3 [76] minimum extension height is required when anchor flange (-K) option is specified. (Specify 'C' Dim. height required.)
- ___ -KC Anchor flange 1 3/4 [44] down from top and 2 [51] wide with clamp collar.
- ___ -STR Storage tank on right hand side when facing the inlet.

Note:

1. Double wall construction will extend the overall length and width of the unit by 3 [76] per side and increase the overall depth by 3 [76].

*REGULARLY FURNISHED UNLESS OTHERWISE SPECIFIED

REV.	DATE: 03/18/09	C.N. NO. 99822
DWG. NO. P-15678	PRODUCT NO. Z1188-ST-81	

ZURN INDUSTRIES, LLC. ♦ SPECIFICATION DRAINAGE OPERATION ♦ 1801 Pittsburgh Ave. ♦ Erie, PA 16514

Phone: 814/455-0921 ♦ Fax: 814/454-7929 ♦ World Wide Web: www.zurn.com

In Canada: ZURN INDUSTRIES LIMITED ♦ 3544 Nashua Drive ♦ Mississauga, Ontario L4V1L2 ♦ Phone: 905/405-8272 Fax: 905/405-1292