



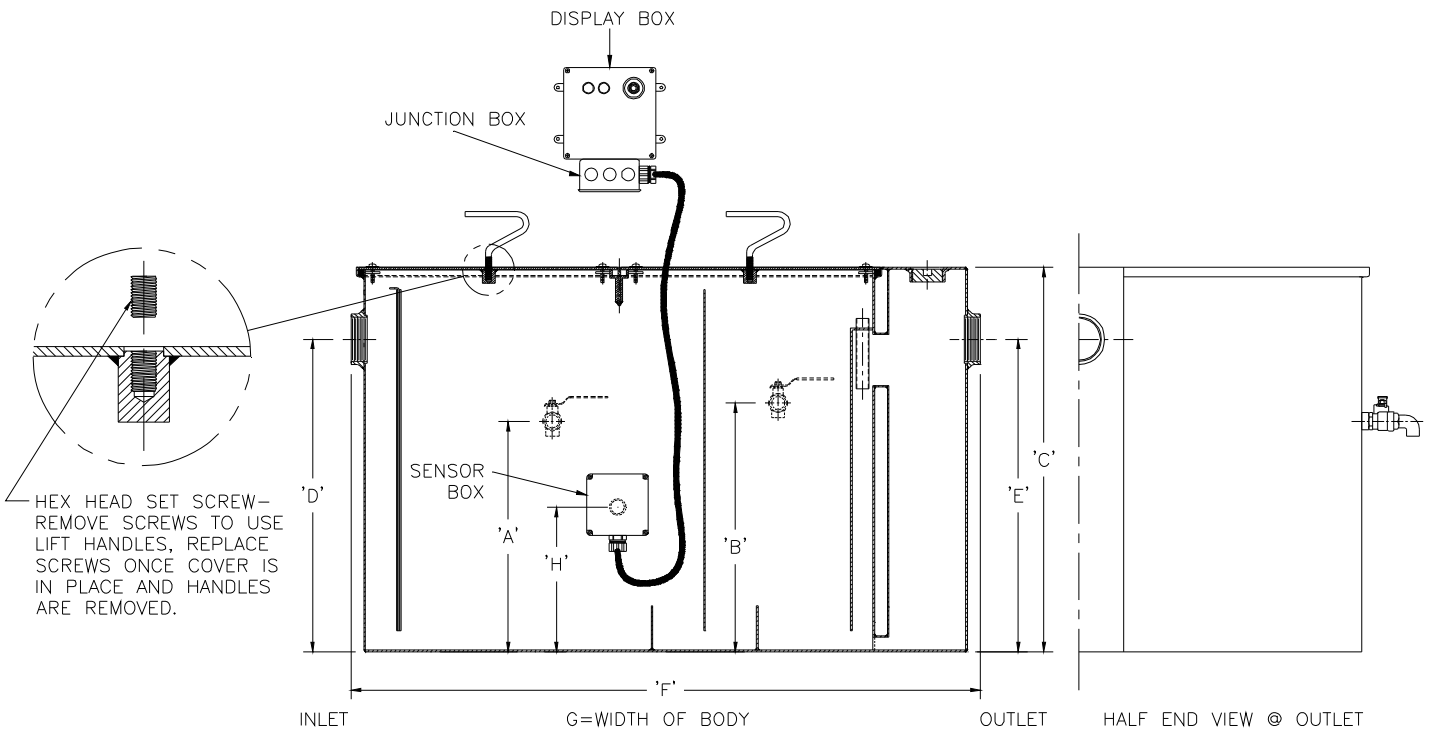
Z1172-171

LARGE CAPACITY GREASE INTERCEPTOR WITH DRAW-OFF VALVES AND USER NOTIFICATION SYSTEM

SPECIFICATION SHEET

TAG _____

Dimensional Data (inches and [mm]) are Subject to Manufacturing Tolerances and Change Without Notice



Size	Inlet/Outlet Size	Flow Rate G.P.M. [L]	Capacity		No. of Covers	Approx. Wt. Lbs. [kg]	Dimensions in Inches						
			Water Gal. [L]	Grease Lbs. [kg]			A	B	C	D/E	F	G	H
1000	3 [76]	100 [379]	110 [416]	200 [91]	1	408 [185]	15-11/16 [399]	17-1/2 [445]	27 [686]	23 [584]	42-3/4 [1086]	33-5/8 [854]	16-1/8 [410]
1200	4 [102]	150 [567]	195 [737]	300 [136]	2	856 [389]	18-1/16 [459]	19-1/2 [496]	30-3/4 [781]	25-1/4 [641]	56 [1422]	41-5/8 [1057]	18-1/16 [459]
1300	4 [102]	200 [756]	270 [1021]	400 [182]	2	1016 [461]	21-7/8 [556]	24 [610]	35-1/2 [902]	29-7/8 [759]	61 [1549]	43-5/8 [1108]	21-7/8 [556]
1500	5 [127]	300 [1134]	665 [2514]	600 [272]	2	1770 [804]	31-1/2 [800]	33-5/8 [854]	46-1/4 [1175]	39-5/8 [1006]	80 [2032]	58-3/8 [1489]	32-1/2 [826]
1900	6 [152]	500 [1890]	1440 [5443]	1000 [454]	3	2857 [1297]	42-1/2 [1080]	44-3/4 [1137]	57-1/4 [1454]	51-5/8 [1311]	104 [2642]	74 [1880]	43-5/8 [1108]

ENGINEERING SPECIFICATION: ZURN Z1172-171

Large capacity Acid Resistant Coated interior and exterior fabricated steel grease interceptor, rated at ___ GPM and ___ Lbs. grease capacity, with internal air relief by-pass, bronze cleanout plug, visible double wall trap seal, removable pressure equalizing/flow diffusing baffle, and dual side 3/4 NPS grease draw-off valves located in both grease separation chambers. Gasketed non-skid secured cover with removable lift handles. Complete with flow control fitting. Regularly furnished with inlet and outlet in high position, draw off valves located on right hand side as viewed from outlet end, and user notification system.

OPTIONS (Check/specify appropriate options)

PREFIXES

- ___ Z Acid Resistant Coated Fabricated Steel*
- ___ ZS All Type 304 Fabricated Stainless Steel

SUFFIXES

- ___ -AL Aluminum Cover
- ___ -L Angle type (Z1108-L) flow control device.

* Regularly furnished unless otherwise specified.