



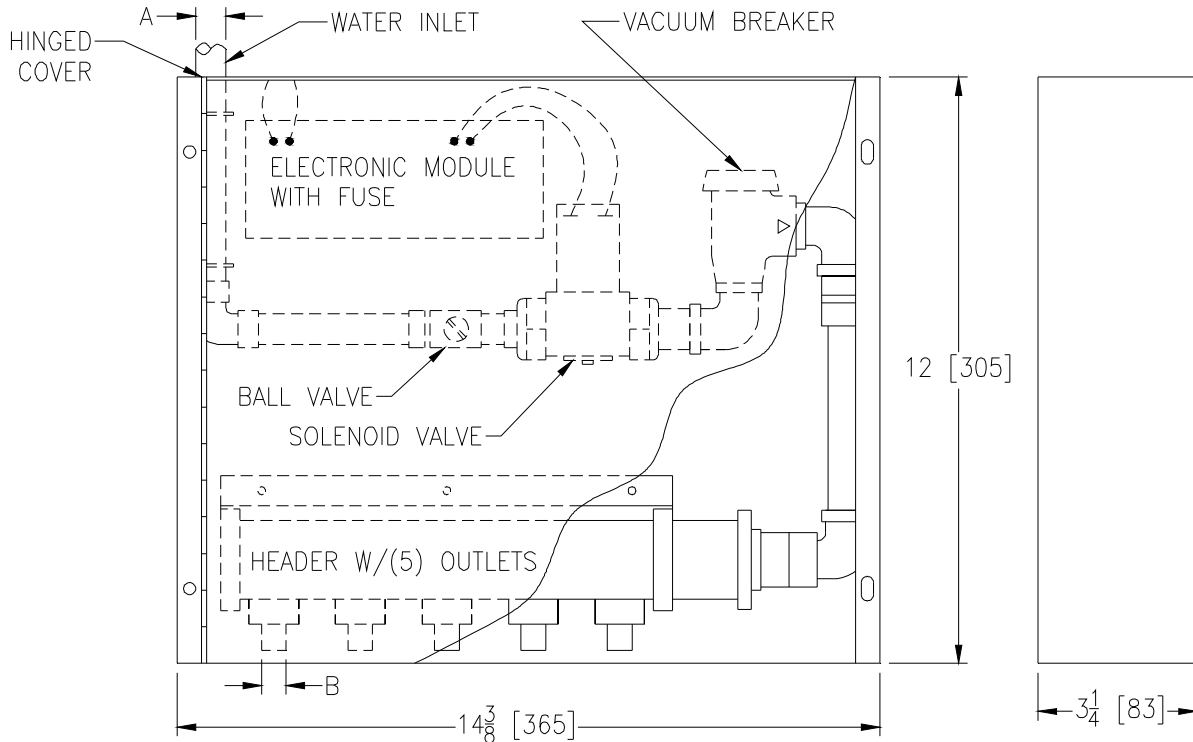
Z1020-86

ELECTRONIC TRAP PRIMER WITH STAINLESS STEEL HOUSING & HINGED COVER

SPECIFICATION SHEET

TAG _____

Dimensional Data (inches and [mm]) are Subject to Manufacturing Tolerances and Change Without Notice



Dimensions in Inches [mm]		Approx. Wt. Lbs. [kg]
A	B	
1/2 [13]	1/2 [13]	12 [5]

ENGINEERING SPECIFICATION: ZURN Z1020-86

Electronic trap primer programmed as standard to provide a six second water injection to traps every twenty-four hours*, 1/2" [13mm] solder copper inlet connection, brass ball type stop valve, slow closing 24 VAC solenoid valve with integral strainer, 120 - 24 VAC transformer, brass atmospheric vacuum breaker, PEX waterway, and anti-scaling multi-port manifold with five 1/2" [13mm] Male PEX outlet connections. (For copper connection outlets -CW option must be specified.) Complete with stainless steel housing and hinged cover.

Min. Pressure: 3 psi
 Working Pressure: 20 to 100 psig
 Default Settings:
 -Frequency: 24 hours
 -Injection Time: 6 seconds.
 -Volume: 2 oz. min. per port

OPTIONS (Check/specify appropriate options)

SUFFIXES

- ___ -CW Copper Waterway (with 1/2 [13] Female I.P.S. Connection)
- ___ -DU4 Additional Distribution Units with Copper Waterway (Specify Quantity) (Contact Zurn for Sizing Specifications)
- ___ -VP Vandal-Proof Secured Cover with Vandal-Proof Driver
- ___ -10 Ten Outlets

* Regularly furnished unless otherwise specified.