



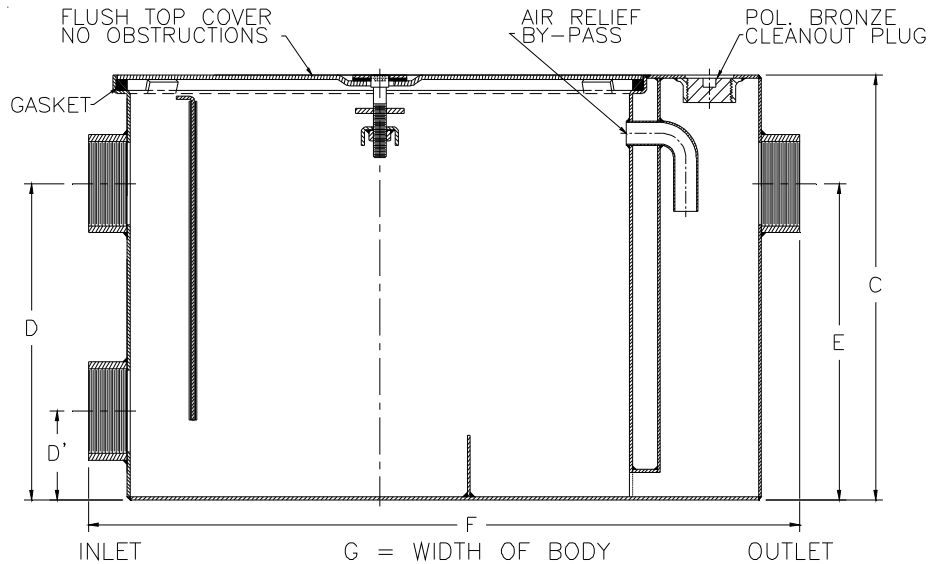
Z1170-162

SIZE 500 GREASE INTERCEPTOR W/ CUSTOM DUAL HIGH/LOW INLET

SPECIFICATION SHEET

TAG _____

Dimensional Data (inches and [mm]) are Subject to Manufacturing Tolerances and Change Without Notice



Size	Inlet/ Outlet Size**	Flow Rate G.P.M. [LPM]	Capacity		Approx. Wt. Lbs. [kg]	Dimensions in Inches [mm]				
			Water Gal. [L]	Grease Lbs. [kg]		C	D/E	D'	F	G
500	3 [76]	20 [76]	16 [60]	40 [18]	99 [45]	15 [381]	11-3/4 [298]	4-1/2 [114]	30 [762]	17-1/4 [438]

ENGINEERING SPECIFICATION: ZURN Z1170-162

Acid Resistant Coated interior and exterior fabricated steel grease interceptor, PDI, rated at 20 GPM and 40 Lbs. grease capacity, with internal air relief by-pass, bronze cleanout plug and visible double wall trap seal with removable combination pressure equalizing/flow diffusing baffle. Gasketed non-skid secured cover complete with Z1108 flow control fitting. Furnished with a custom dual high/low inlet and outlet connection.

PREFIXES

- ___ Z Acid Resistant Coated Fabricated Steel*
- ___ ZS All Type 304 Fabricated Stainless Steel

SUFFIXES

- ___ -E Acid Resistant Coated Interior and exterior fabricated steel extension section. (Specify 'C' Dim. required) for recessed installation.
- ___ -HD Heavy-Duty Cover rated at 10,000 lbs. [4536 kg.] maximum safe live load. A 3 [76] minimum extension height is required when Heavy-Duty Cover (-HD) option is specified.
- ___ -K Anchor flange 1-3/4 [44] down from top and 2 [51] wide. A 3 [76] minimum extension height is required when anchor flange (-K) option is specified. (Specify 'C' Dim. height required.)
- ___ -KC Anchor flange 1-3/4 [44] down from top and 2 [51] wide with clamp collar. A 3 [76] minimum extension height is required when anchor flange (-K) option is specified.
- ___ -L Angle type (Z1108-L) flow control device.
- ___ -R Recessing receiver for recessed installation is equipped with adjustable support brackets and gasketed non-skid cover with covered recessed lift handle.
- ___ -RE Recessing receiver enclosed type for recessed installation. Furnished with adjustable support brackets and gasketed non-skid secured cover with covered recessed lift handle.
- ___ -T Cover recessed for tile/terrazzo. A 3 [76] minimum extension height is required. (Specify 'C' Dim. and required recess depth - 1/8 [3], 3/4 [19], or 1-1/4 [32]).

** Inlet and outlet sizes shown indicate standard operating sizes and flow control setting.

* Regularly furnished unless otherwise specified.

Zurn Industries, LLC | Specification Drainage Operation
 1801 Pittsburgh Avenue, Erie, PA U.S.A. 16502 · Ph. 855-663-9876, Fax 814-454-7929
 In Canada | Zurn Industries Limited
 3544 Nashua Drive, Mississauga, Ontario L4V 1L2 · Ph. 905-405-8272, Fax 905-405-1292
www.zurn.com

Rev. -
 Date: 07/27/16
 C.N. No. 134860
 Prod. | Dwg. No. Z1170-162