

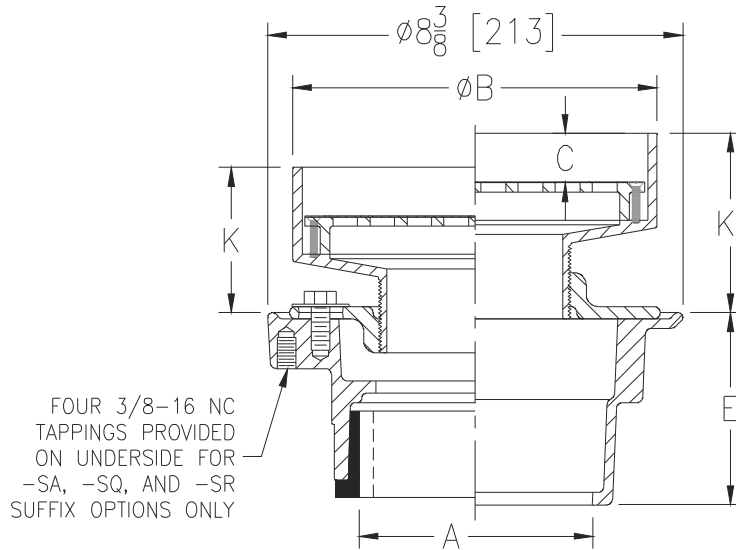


**Z415I-86**  
**BODY ASSEMBLY**  
**W/ "TYPE I" STRAINER & PROTECTIVE COVER**

**SPECIFICATION SHEET**

**TAG** \_\_\_\_\_

Dimensional Data (inches and [ mm ]) are Subject to Manufacturing Tolerances and Change Without Notice



Dimensions In Inches [mm]							Approx. Wt. Lbs. [kg]	Strainer Open Area Sq. In. [cm <sup>2</sup> ] <small>(After removal of protective cover)</small>
A -Pipe Size	B Strainer Dia.	C	K		K'			
			Min.	Max.	Min.	Max.		
2,3,4 [51,76,102]	7-3/8 [187]	1 [25]	2-9/16 [65]	3-3/8 [86]	2-7/8 [73]	4-1/8 [105]	19 [9]	13 [84]

**ENGINEERING SPECIFICATION: ZURNZN415I-86**

Floor and shower drain, Dura-Coated cast iron body with bottom outlet, combination invertible membrane clamp and adjustable collar with seepage slots and "TYPE I" polished nickel bronze strainer with raised flange & galvanized steel construction protective cover.

**OPTIONS** (Check/specify appropriate options)

**PIPE SIZE**

- 2,3,4 [51,76,102]
- 2,3,4 [51,76,102]
- 2 [51]
- 3 [76]
- 4 [102]
- 2,3,4 [51,76,102]
- 2,3,4 [51,76,102]

(Specify size/type) **OUTLET**

- \_\_\_\_\_ IC Inside Caulk
- \_\_\_\_\_ IG Inside Gasket
- \_\_\_\_\_ IP Threaded
- \_\_\_\_\_ IP Threaded
- \_\_\_\_\_ IP Threaded
- \_\_\_\_\_ NH No-Hub
- \_\_\_\_\_ NL Neo-Loc

**'E' BODY HT. DIM.**

- 3-7/8 [98]
- 3-7/8 [98]
- 2-3/8 [60]
- 2-5/8 [67]
- 2-7/8 [73]
- 3-7/8 [98]
- 3-3/4 [95]

**PREFIXES**

- \_\_\_\_\_ ZB D.C.C.I. Body Assembly w/ Polished Bronze Top
- \_\_\_\_\_ ZN D.C.C.I. Body Assembly w/ Polished Nickel Bronze Top\*

**SUFFIXES**

- |  |   |
|--|---|
| _____ -AR Acid Resisting Epoxy Coated Cast Iron                | _____ -TC Neo-Loc Test Cap Gasket<br>( 2,3,4 [51,76,102] NL Bottom Outlet Only) |
| _____ -G Galvanized Cast Iron                                  | _____ -U 1,2,3 [ 25,51,76] High Extension Adapter                               |
| _____ -P Trap Primer Connection (Specify 1/2 [13] or 3/4 [19]) | _____ -V Backwater Valve  |
| _____ -SA Stabilizer Assembly (See Z1035)                      | _____ -Y Sediment Bucket  |
| _____ -SQ Stabilizer Q-Deck (See Z1035-Q)                      | _____ -18 Leveling Ring (See Z400-18)   |
| _____ -SR Stabilizer Ring                                      | _____ -90 90° Threaded Side Outlet Body<br>Assembly (2 [51], 3 [76] Only)       |

\* Regularly furnished unless otherwise specified.