



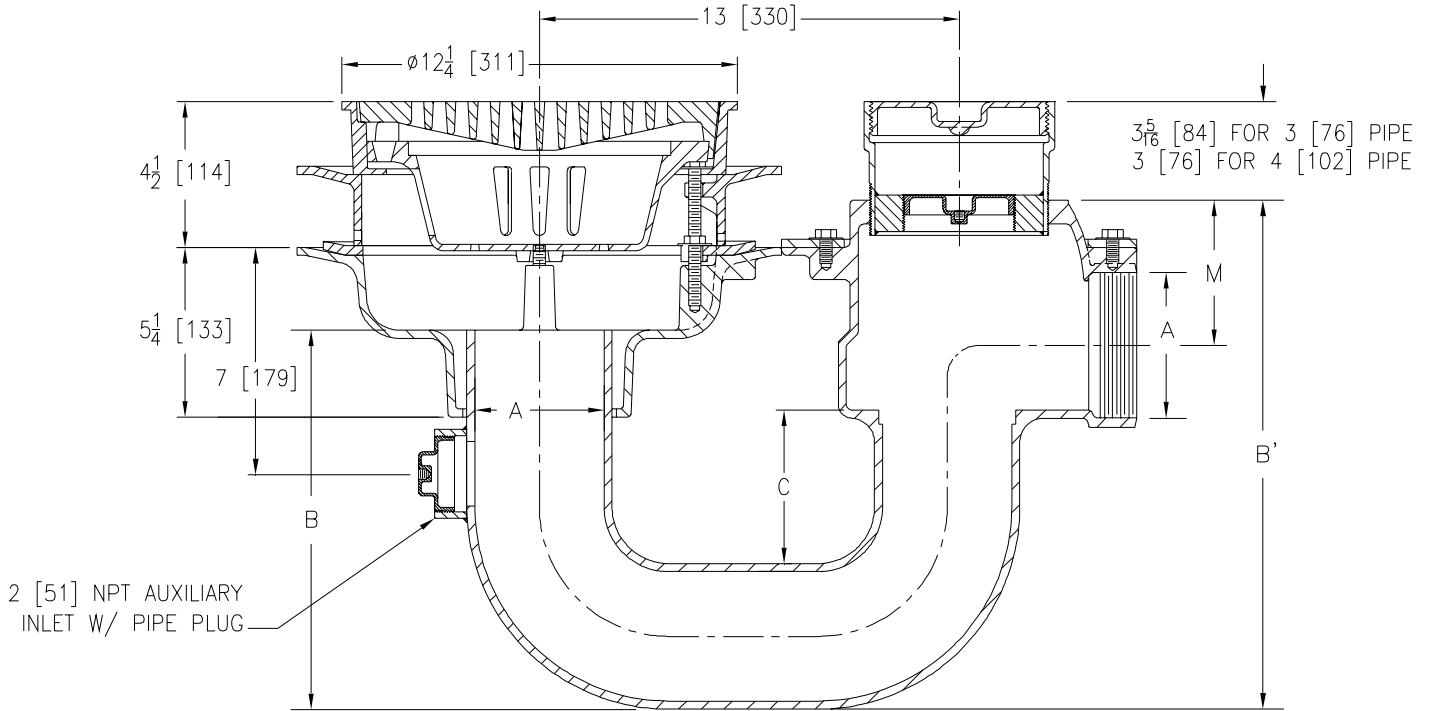
# Z761-77

## 12 1/4 [311] DIA. HEAVY-DUTY DRAIN W/ INTEGRAL TRAP & 2 [51] AUXILIARY INLET

SPECIFICATION SHEET

TAG \_\_\_\_\_

Dimensional Data (inches and [ mm ]) are Subject to Manufacturing Tolerances and Change Without Notice



A Pipe Size	Dimensions In Inches				Approx. Wt. Lbs. [kg]	Grate Open Area Sq. In. [cm <sup>2</sup> ]
	B	B'	C	M		
3 [76]	12 1/2 [318]	13 1/2 [343]	4 3/4 [121]	4 [102]	140 [64]	30 [194]
4 [102]	9 1/4 [235]	15 3/4 [400]	5 [127]	4 1/2 [114]	145 [66]	

**ENGINEERING SPECIFICATION** Z761-77 12 1/4 [311] Diameter top drain, Dura-Coated cast iron body with bottom outlet, seepage pan and combination membrane flashing clamp and frame for heavy-duty deep flange slotted grate with suspended sediment bucket, complete with threaded side outlet deep seal trap with seepage pan, adjustable cleanout with bronze plug, and 2 [51] threaded auxiliary inlet with bronze plug.

**OPTIONS** (Check/specify appropriate options)

**PIPE SIZE** (Specify size) **OUTLET**  
 3, 4 [76, 102] \_\_\_\_\_ IP Threaded

**PREFIXES**

- \_\_\_ Z D.C.C.I. Body and Grate\*
- \_\_\_ ZB D.C.C.I. Body with Polished Bronze Grate  
(Add 3/16 [5] to 4 1/2 [114] Dim. & 3/16 [5] to 12 1/4 [311] Dim.)
- \_\_\_ ZN D.C.C.I. Body with Polished Nickel Bronze Grate  
(Add 3/16 [5] to 4 1/2 [114] Dim. & 3/16 [5] to 12 1/4 [311] Dim.)

**SUFFIXES**

- \_\_\_ -C Clamp Collar
- \_\_\_ -DG Duresist Grate
- \_\_\_ -G Galvanized Cast Iron
- \_\_\_ -P Trap Primer Connection
- \_\_\_ -TS Top Secured With Slotted Screws
- \_\_\_ -V Backwater Valve
- \_\_\_ -VP Vandal-Proof Secured Top

<b>REV.</b>	<b>DATE:</b> 4/28/08	<b>C.N. NO.</b> 98406
<b>DWG. NO. P-15544 PRODUCT NO. Z761-77</b>		

\*REGULARLY FURNISHED UNLESS OTHERWISE SPECIFIED