



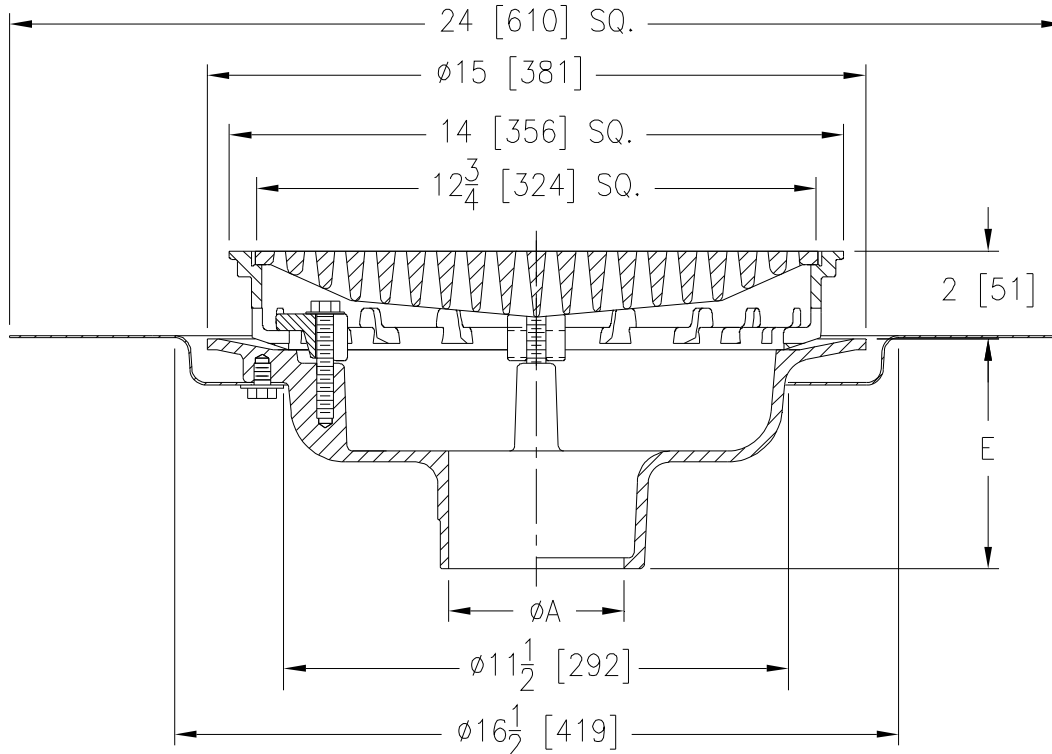
# Z150-DP

14 [356] SQUARE TOP PROM-DECK DRAIN W/ TOP-SET®  
DECK PLATE, HEEL PROOF GRATE, AND ROTATABLE  
FRAME

SPECIFICATION SHEET

TAG \_\_\_\_\_

Dimensional Data (inches and [ mm ]) are Subject to Manufacturing Tolerances and Change Without Notice



A Pipe Size in [mm]	Approx Wt. lbs [kg]	Grate Open Area in <sup>2</sup> [cm <sup>2</sup> ]
2,3,4 [51,76,102]	63 [29]	44 [284]
6 [152]		
8 [203]	64 [29]	

## ENGINEERING SPECIFICATION: ZURN Z150-DP

14" [356mm] Square top Prom-Deck drain, Dura-Coated cast iron body with rotatable square promenade frame with seepage openings, frame clamps, heavy-duty heel proof grate, and Top-Set® deck plate.

## OPTIONS (Check/specify appropriate options)

### PIPE SIZE

2,3,4,6[51,76,102,152]  
2,3,4,6,8[51,76,102,152,203]  
2,3,4,6,8[51,76,102,152,203]  
2,3,4[51,76,102]

### PREFIXES

\_\_\_ Z D.C.C.I. Body with Top\*  
\_\_\_ ZB D.C.C.I. Body with Polished Bronze Top (Add 3/16 [5] to 2 [51] Dim & 3/8 [10] to 14 [356] Dim.)  
\_\_\_ ZN D.C.C.I. Body with Polished Nickel Bronze Top (Add 3/16 [5] to 2 [51] Dim & 3/8 [10] to 14 [356] Dim.)

### SUFFIXES

\_\_\_ -AR Acid Resistant Epoxy Coated  
\_\_\_ -DG Duresist Grate  
\_\_\_ -DT Decorative Polished Top (ZN and ZB Only)  
\_\_\_ -E Static Extension 1 [25] thru 4 [102] (Specify Ht.)  
\_\_\_ -EA Adjustable Extension Assembly  
2-1/8 [54] thru 3-1/2 [89]  
\_\_\_ -G Galvanized Cast Iron  
\_\_\_ -S Secondary Strainer

### (Specify size/type) OUTLET

\_\_\_ IC Inside Caulk  
\_\_\_ IP Threaded  
\_\_\_ NH No-Hub  
\_\_\_ NL Neo-Loc

### E BODY HT. DIM.

5-1/4 [133]  
3-3/4 [95]  
5-1/4 [133]  
4-5/8 [117]

\_\_\_ -SC Secondary Clamping Collar  
\_\_\_ -TC Neo-Loc Test Cap Gasket  
(2,3,4 [51,76,102] NL Bottom Outlet Only)  
\_\_\_ -TS Top Secured with Slotted Screws  
\_\_\_ -VP Vandal Proof Secured Top  
\_\_\_ -XJ Vertical Expansion Joint (See Z190)  
\_\_\_ -Y Sediment Bucket  
\_\_\_ -85 Stainless Steel Perforated Extension  
\_\_\_ -90 90° Threaded Side Outlet Body

\* Regularly furnished unless otherwise specified.