



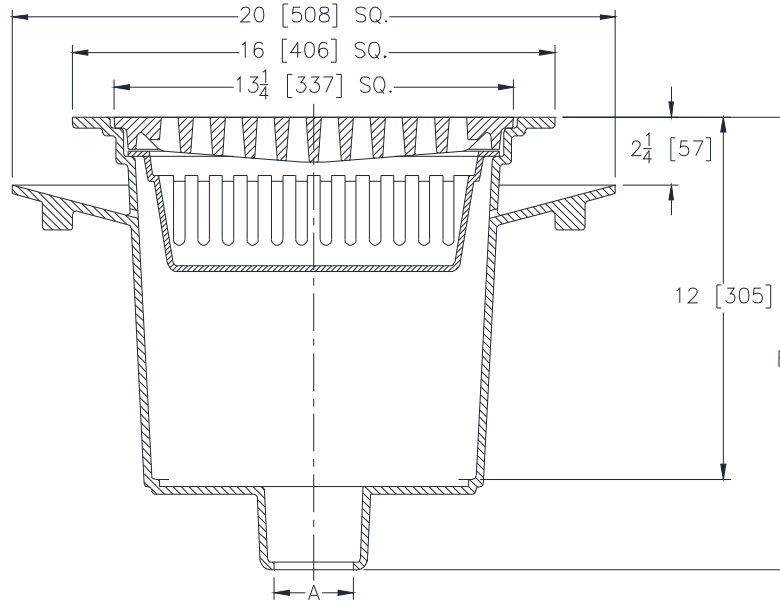
Z1926-23-31

16 X 16 [406 X 406] A.R.C. SANI-FLOR RECEPTOR
 12 [305] SUMP DEPTH WITH STAINLESS STEEL MESH
 LINER FOR ALUMINUM BUCKET

SPECIFICATION SHEET

TAG _____

Dimensional Data (inches and [mm]) are Subject to Manufacturing Tolerances and Change Without Notice



A- Pipe Size In. [mm]	Approx Wt. Lbs. [kg]	Grate Open Area Sq. In. [cm ²]
2, 3, 4, 5, 6, 8 [51, 76, 102, 127, 152, 203]	153 [69]	54 [348]

ENGINEERING SPECIFICATION: ZURN Z1926-23-31
 Sani-Flor Receptor 16" x 16" x 12" [406mm x 406mm x 305mm] deep cast iron body with seepage flange and square slotted heavy duty grate, with white acid resisting epoxy coated interior and top, and aluminum bucket with stainless steel mesh liner.

OPTIONS (Check/specify appropriate options)

PIPE SIZE	(Specify size/type)	OUTLET		'E' BODY HT. DIMENSION	
		Z	ZN	Z	ZN
3, 4, 6 [76, 102, 152]	_____	IC	Inside Caulk	15 [381]	15-3/16 [386]
2, 3, 4, 5, 6, 8 [51, 76, 102, 127, 152, 203]	_____	NH	No-Hub	15 [381]	15-3/16 [386]
2, 3, 4 [51, 76, 102]	_____	NL	Neo-Loc	14-1/4 [362]	14-7/16 [367]

PREFIXES

- _____ Z Cast Iron Body with White A.R.C. Interior*
- _____ ZN Cast Iron Body with White A.R.C. Interior, 16-3/4 [425] Square Nickel Bronze Frame and Full Grate

SUFFIXES

- _____ -C Clamping Collar
- _____ -P 1/2 [13] Trap Primer Connection
- _____ -TC Neo-Loc Test Cap Gasket (2, 3, 4 [51, 76, 102] NL Bottom Outlet Only)
- _____ -1 (Less) Grate
- _____ -2 1/2 Grate
- _____ -3 3/4 Grate
- _____ -4 Full Grate With 2 [51] Square Opening
- _____ -6 Grate w/6 [152] Dia. x 6 [152] High Funnel
- _____ -8 Grate w/8-7/8 x 3-5/8 x 3-3/4 [225 x 92 x 95] High Oval Funnel
- _____ -11 Vandal Proof Secured Grate
- _____ -15 Solid Loose Set Cover

* Regularly furnished unless otherwise specified.