



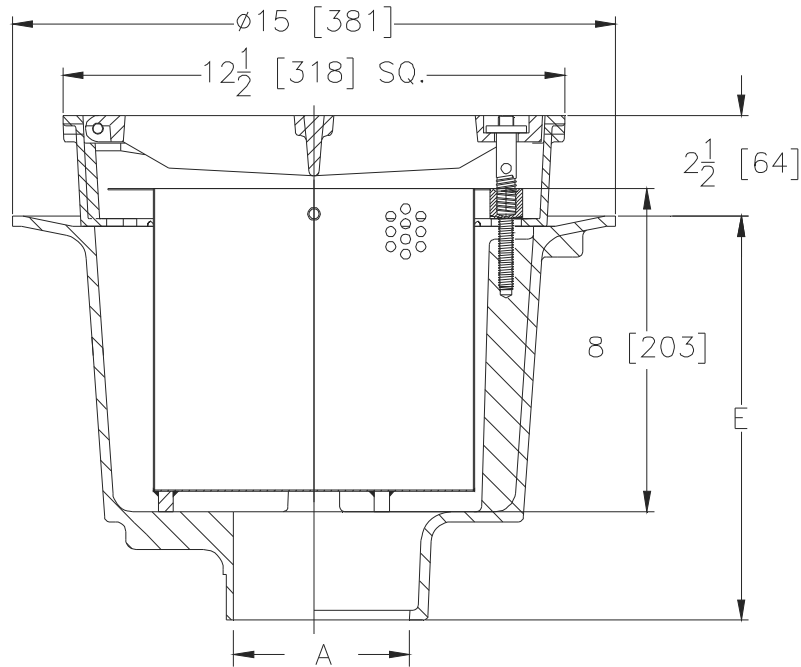
# Z539-97

12-1/2 [318] HEAVY DUTY DEEP SUMP CAST IRON DRAIN W/  
SQUARE HINGED LOCKING GRATE AND SEDIMENT BUCKET

SPECIFICATION SHEET

TAG \_\_\_\_\_

Dimensional Data (inches and [ mm ]) are Subject to Manufacturing Tolerances and Change Without Notice



A Pipe Size In.	Approx. Wt. Lbs. [kg]	Grate Open Area Sq. In. [cm <sup>2</sup> ]
3,4,6 [76,102,152]	68 [31]	40 [258]

**ENGINEERING SPECIFICATION: ZURN Z539-97**  
12-1/2 [318] Square top drain. Cast iron deep sump body with bottom outlet, seepage pan and combination membrane flashing clamp, hinged locking grate with fabricated stainless steel sediment bucket.

**OPTIONS** (Check/specify appropriate options)

**PIPE SIZE**

3,4,6 [76,102,152]  
3,4,6 [76,102,152]  
3,4,6 [76,102,152]

(Specify size/type) **OUTLET**

\_\_\_ IC Inside Caulk  
\_\_\_ IG Inside Caulk w/Sealtrol Gskt.  
\_\_\_ NH No-Hub

**'E' BODY HT. DIM.**

10 [254]  
10 [254]  
10 [254]

**PREFIXES**

\_\_\_ Z D.C.C.I. Body and Grate\*  
\_\_\_ ZB D.C.C.I. Body with Polished Bronze Top (Add 3/16 [5] to 2-1/2 [63] and 3/4 [19] to 12-1/2 [318] Dim.)  
\_\_\_ ZN D.C.C.I. Body with Polished Nickel Bronze Top (Add 3/16 [5] to 2-1/2 [63] and 3/4 [19] to 12-1/2 [318] Dim.)

**SUFFIXES**

\_\_\_ -TC Neo-Loc Test Cap Gasket  
(2 [51]-4 [102] NL Bottom Outlet Only)

\* Regularly furnished unless otherwise specified.