

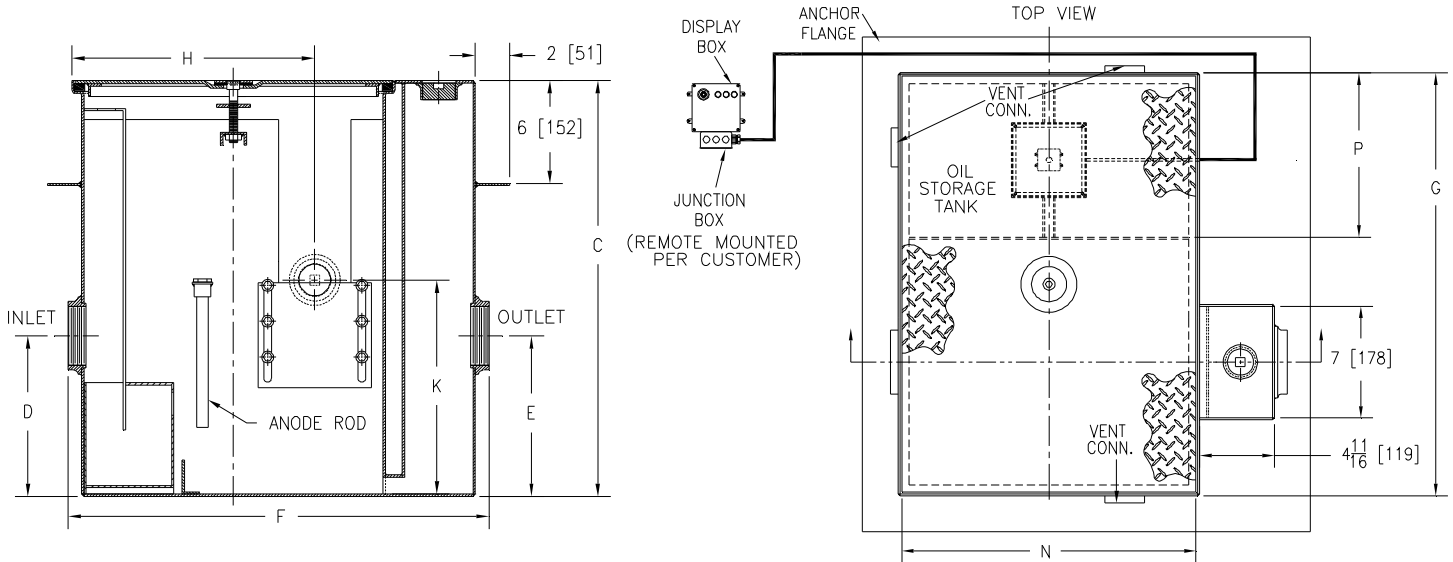


**Z1186-ST-89**  
**OIL INTERCEPTOR**  
**W/ INTEGRAL STORAGE TANK, EXTENSION, ANCHOR**  
**FLANGE, OIL LEVEL SENSOR, & ANODE ROD**

SPECIFICATION SHEET

TAG \_\_\_\_\_

Dimensional Data (inches and [ mm ]) are Subject to Manufacturing Tolerances and Change Without Notice



SIZE	Inlet/Outlet Size**	Flow Rate G.P.M.	Water Capacity Gal.[L]	Approx. Wt. Lbs.[kg]	P
800	3 [76]	50 [189]	30[114]	529 [240]	48 1/8 [1222]

SIZE	Dimensions in inches [mm]							Oil Storage Tank Capacity Gal.[L]	No. of Covers
	C	D/E	F	G	H	K	N		
800	24 1/4 [616]	14 3/16 [360]	49 7/16 [1256]	69 21/32 [1769]	26 1/4 [667]	21 1/4 [540]	43 [1092]	125 [473]	3

**ENGINEERING SPECIFICATION:** ZURN Z1186-ST-89 Acid Resistant Coated interior and exterior fabricated steel oil interceptor, with fiberglass sensor box containing a float oil level sensor, a fiberglass display box with one green power light, one red oil level light, audio alarm and junction box. Complete with bronze cleanout plug and visible double wall trap seal, removable combination pressure equalizing/flow diffusing baffle, sediment bucket, oil drawoff, and anchor flange (6 [152] down from top and 2 [51] wide), anode rod, vent connections, secured gasketed non-skid cover, flow control fitting, and left hand integral storage tank. Regularly furnished with inlet and outlet in high position. Note: location of outlet from bottom of interceptor cannot be changed.

**OPTIONS** (Check/specify appropriate options)

**PREFIXES**

\_\_\_\_\_ **Z** Acid Resistant Coated Fabricated Steel\*

**SUFFIXES**

\_\_\_\_\_ **-STR** Storage tank on right hand side when facing the inlet.

Note:

1. Power supply 120V GFCI.
2. Recommended Installations: Sitting on the floor or recessed in a pit only. (A pit installation requires that a drain or sump pump be installed to keep the pit relatively dry).
3. For pit installation see Form #IT66.

\*\* Inlet and outlet sizes shown indicate standard operating sizes and flow control settings. Size #800 will have 4 [100] connections reduced to 3 [76] as standard.

\*REGULARLY FURNISHED UNLESS OTHERWISE SPECIFIED

<b>REV. A</b>	<b>DATE: 10/4/07</b>	<b>C.N. NO. 97424</b>
<b>DWG NO. P-15420</b>	<b>PRODUCT NO. Z1186-ST-89</b>	