



Z100-317

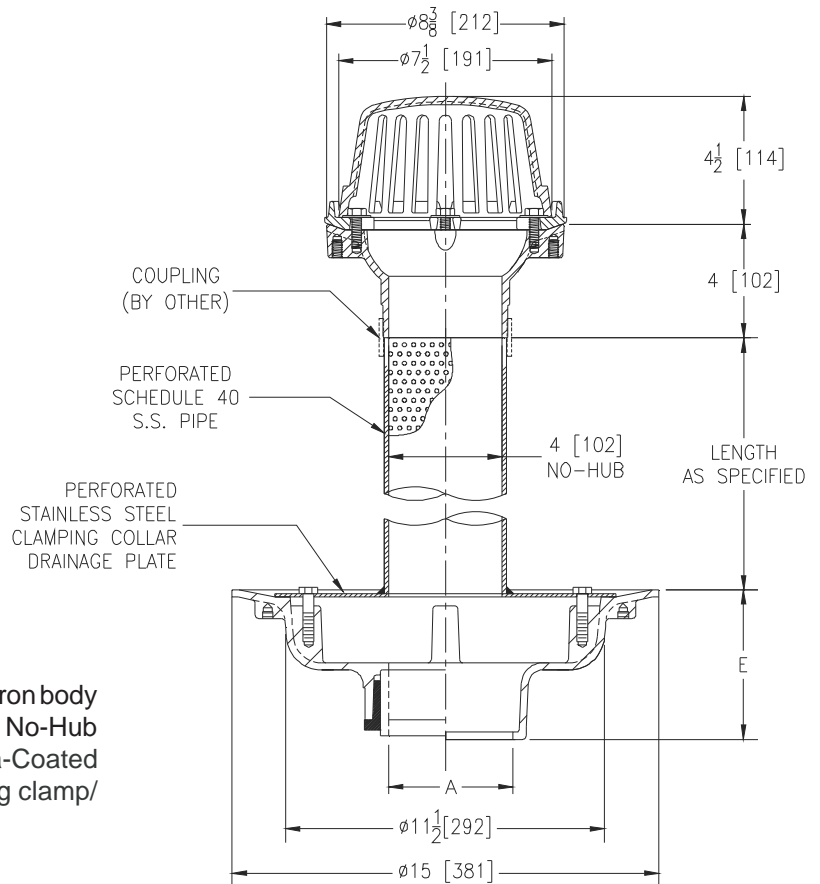
15 [381] DIAMETER MAIN ROOF DRAIN W/ STAINLESS STEEL PERFORATED PLATE, 4 [102] NO-HUB ADAPTER & 8-3/8 [213] DIAMETER ROOF DRAIN W/ LOW SILHOUETTE DOME

SPECIFICATION SHEET

TAG _____

Dimensional Data (inches and [mm]) are Subject to Manufacturing Tolerances and Change Without Notice

A- Pipe Size Inches [mm]	Minimum Weight Lbs. [kg]	Dome Open Area Sq. In. [cm ²]
2,3,4 [51,76,102]	40 [18]	43 [277]
5,6 [127,152]	41 [19]	
8 [203]	42 [19]	
10 [254]	44 [20]	



ENGINEERING SPECIFICATION: ZURN Z100-317

15" [381mm] Diameter roof drain. Dura-Coated cast iron body with stainless steel perforated plate with 4" [102mm] No-Hub adapter & 8-3/8" [213mm] Diameter roof drain, Dura-Coated cast iron body with combination membrane flashing clamp/ gravel guard and low silhouette Poly-Dome.

OPTIONS (Check/specify appropriate options)

PIPE SIZE

2,3,4,5,6, 8 [51,76,102,127,152,203]

2,3,4,5,6, 8 [51,76,102,127,152,203]

2,3,4,5,6, 8,10 [51,76,102,127,152,203,254]

2,3,4 [51,76,102]

(Specify size/type) OUTLET

_____ IC Inside Caulk
 _____ IP Threaded
 _____ NH No-Hub
 _____ NL Neo-Loc

E BODY HT. DIM.

5-1/4 [133]
 3-3/4 [95]
 5-1/4 [133]
 4-5/8 [117]

PREFIXES

_____ Z D.C.C.I. Body with Poly-Dome (4-1/4 [108] Dome Height)*

SUFFIXES

_____ -AC	Angular Underdeck Clamp	_____ -R	Roof Sump Receiver
_____ -C	Underdeck Clamp	_____ -SS	Stainless Mesh Screen Over Dome (Top Drain)
_____ -DP	Top-Set® Deck Plate (Replaces both the -C and -R)	_____ -TC	Neo-Loc Test Cap Gasket (2,3,4 [51,76,102] NL Bottom Outlet Only)
_____ -DR	Top-Set® Drain Riser	_____ -VP	Vandal-Proof Secured Top (Top Drain)
_____ -DX	Dex-o-tex Flange	_____ -XJ	Vertical Expansion Joint (See Z190)
_____ -E	Static extension 1 thru 4 (Specify Height)	_____ -90	90° Threaded Side Outlet Body (2 thru 6 [51 or 152])
_____ -EA	Adjustable Extension Assembly (2-1/8 thru 3-1/2)		
_____ -G	Galvanized Cast Iron		

* Regularly furnished unless otherwise specified.