



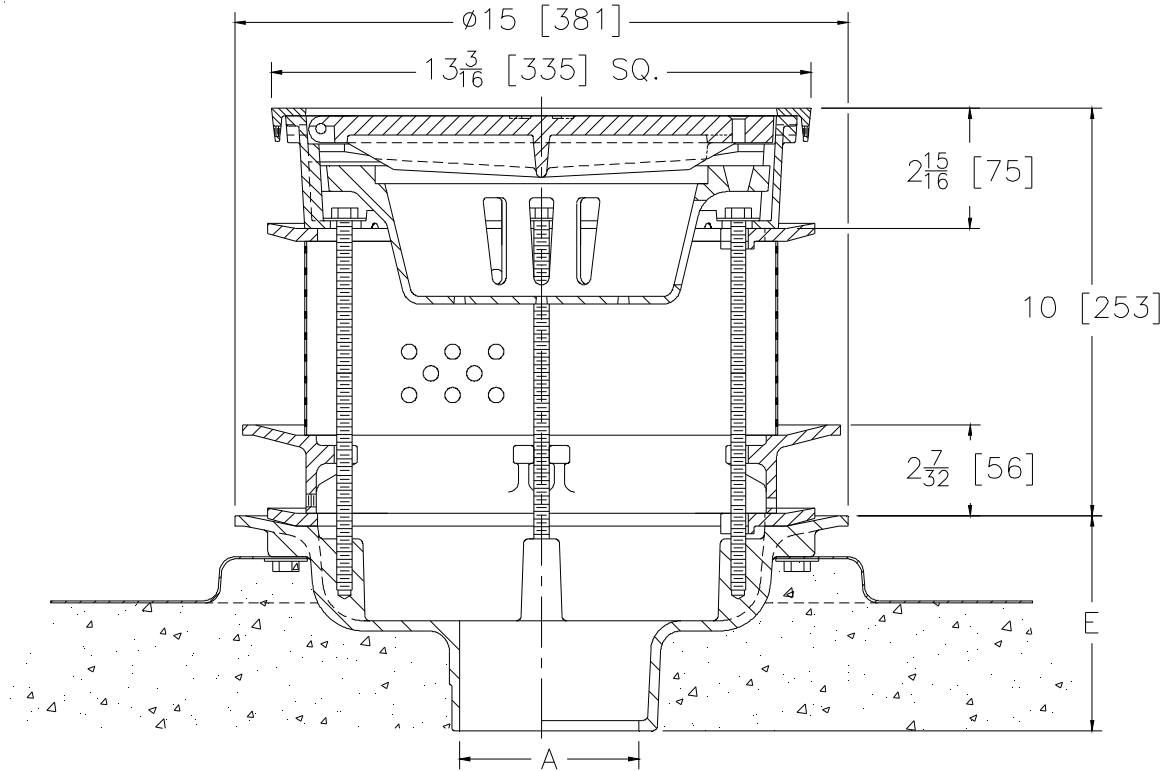
Z610-126

SPECIFICATION SHEET

12 [305] SQ. HEAVY-DUTY DRAIN W/ EXTENSIONS, SOLID COVER, BUCKET & DECK PLATE

TAG _____

Dimensional Data (inches and [mm]) are Subject to Manufacturing Tolerances and Change Without Notice



A- Pipe Size In.	Approx. Wt. Lbs. [kg]	Grate Open Area Sq. In. [cm ²]
2-3-4-5-6 [51-76-102-127-152]	54 [24]	21 [135]
8-10 [203-254]	56 [25]	

ENGINEERING SPECIFICATION: ZURN Z610-126

12 [305] Square top drain, Dura-Coated cast iron body with bottom outlet, seepage pan and combination membrane flashing clamp, deck plate, secondary clamp collar, solid extension, perforated extension, frame for heavy duty cast iron loose solid cover and suspended sediment bucket.

OPTIONS (Check/specify appropriate options)

PIPE SIZE

- 2 thru 6, 8, 10 [51 thru 152, 203, 254]
- 2 thru 4, 6 [51 thru 102, 152]
- 2 thru 6, 8, 10 [51 thru 152, 203, 254]
- 2 thru 6, 8, 10 [51 thru 152, 203, 254]
- 2 thru 4 [51 thru 102]

(Specify size/type) OUTLET

- _____ IC Inside Caulk
- _____ IG Inside Caulk w/Sealtrol Gskt.
- _____ IP Threaded
- _____ NH No-Hub
- _____ NL Neo-Loc

'E' BODY HT. DIM.

- 5-1/4 [133]
- 5-1/4 [133]
- 3-3/4 [95]
- 5-1/4 [133]
- 4-5/8 [117]

PREFIXES

- _____ ZB D.C.C.I Body w/Polished Bronze Top
- _____ ZN D.C.C.I Body w/Polished Nickel Bronze Top*

SUFFIXES

- _____ -AR Acid Resistant Epoxy Coated Finish
- _____ -DG Duresist Grate
- _____ -DX Dex-o-tex Flange
- _____ -G Galvanized Cast Iron
- _____ -P Trap Primer Connection
- _____ -S Secondary Strainer
- _____ -V Backwater Valve (See Z1099)
- _____ -VP Vandal Proof Secured Top
- _____ -YA Aluminum Sediment Bucket
- _____ -90 90° Threaded Side Outlet Body

*REGULARLY FURNISHED UNLESS OTHERWISE SPECIFIED

REV. DATE: 06/07/13 C.N. NO. 129482

PROD./DWG. NO. Z610-126