



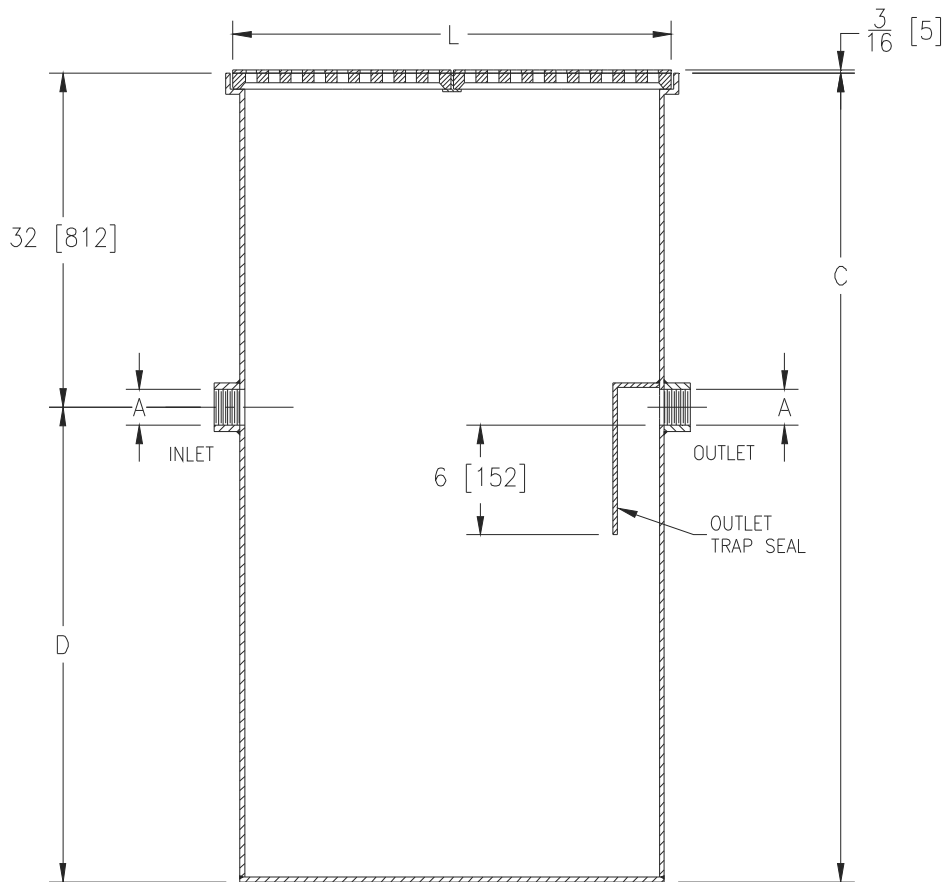
Z1187-SI-117

SIZE 20 SAND INTERCEPTOR WITH
INTEGRAL EXTENSION, & HEEL PROOF VENEER

SPECIFICATION SHEET

TAG _____

Dimensional Data (inches and [mm]) are Subject to Manufacturing Tolerances and Change Without Notice



Extension Designation -E	Size	Flow G.P.M. [L] (Max.)	A Pipe Size	C	L	D	Capacity Gal. [L] (Static)	No. of 12x24 [305x610] Grates	Width
E 20	20	20 [76]	4 [102]	58 [1473]	24 [610]	26 [660]	60 [227]	2	24 [610]

ENGINEERING SPECIFICATION: ZURN Z1187-SI-117

Acid Resistant Coated interior and exterior fabricated steel sand interceptor with threaded inlet and outlet, integral extension, complete with removable heavy-duty grates, and heel proof veneer.

OPTIONS (Check/specify appropriate options)

PREFIXES

___ Z Acid Resistant Coated Fabricated Steel*

SUFFIXES

___ -NH No-Hub Inlet and Outlet (Specify Size)

* Regularly furnished unless otherwise specified.