



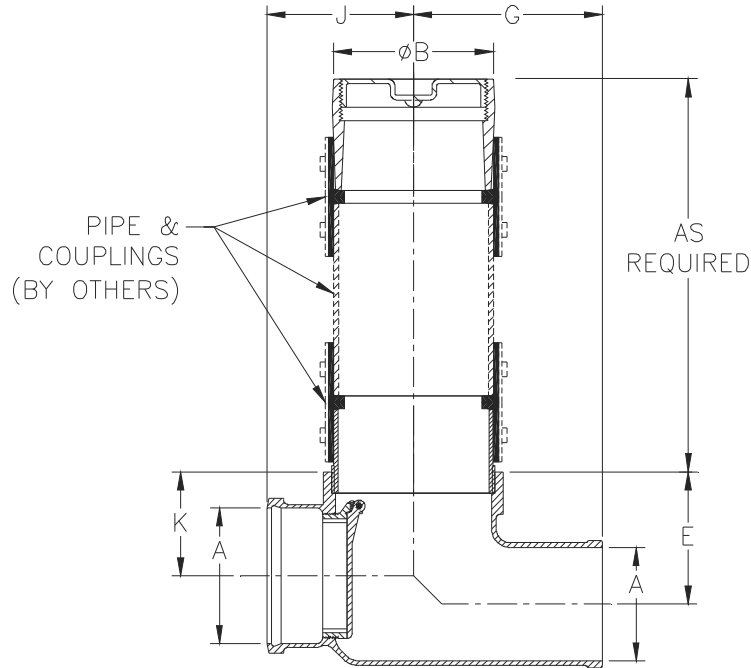
Z1095-89

BACKWATER VALVE W/ CLEANOUT FERRULE

SPECIFICATION SHEET

TAG _____

Dimensional Data (inches and [mm]) are Subject to Manufacturing Tolerances and Change Without Notice



ENGINEERING SPECIFICATION: ZURN Z1095-89

Backwater Valve, Dura-Coated cast iron body, hub inlet and offset spigot outlet, automatic type valve seat and flapper which hangs closed during periods of non-operation, complete with no-hub adapter and Dura-Coated cast iron floor cleanout with gas and watertight ABS tapered threaded plug.

Dimensions In Inches						App. Wt. Lbs. [kg.]
Pipe Size		E	G	J	K	
A	B					
2 [51]	4-9/16 [116]	4-3/8 [111]	7 [178]	5 [127]	2-7/8 [73]	28 [13]
3 [76]	5-9/16 [141]	5-1/8 [130]	8 [203]	6 [152]	3-5/8 [92]	37 [17]
4 [102]	6-5/16 [160]	5-5/8 [143]	8-1/2 [216]	6-3/4 [171]	4-1/8 [105]	42 [19]
6 [152]	8-3/8 [213]	6 [152]	10 [254]	7-3/4 [197]	4-1/2 [114]	70 [32]
8 [203]	10-9/16 [268]	7-1/2 [191]	11-7/8 [302]	9-3/8 [238]	6 [152]	99 [45]
10 [253]	12-9/16 [319]	7-7/16 [189]	12-3/4 [324]	10-7/8 [276]	7 [178]	130 [59]

CONNECTIONS (Check/specify appropriate options)

PIPE SIZE (Specify size) **CONNECTION**
 2,3,4,6,8,10 [51,76,102,154,203,254] _____ HB X SP Hub x Spigot

PREFIXES

- _____ Z D.C.C.I. Body*
- _____ ZB D.C.C.I. Body with Polished Bronze Top
- _____ ZN D.C.C.I. Body with Polished Nickel Bronze Top

SUFFIXES

- _____ -BP Bronze Plug
- _____ -BV Bronze Flapper Valve (4 [102] Size only)
- _____ -G Galvanized Cast Iron

* Regularly furnished unless otherwise specified.