



Z874-12-87

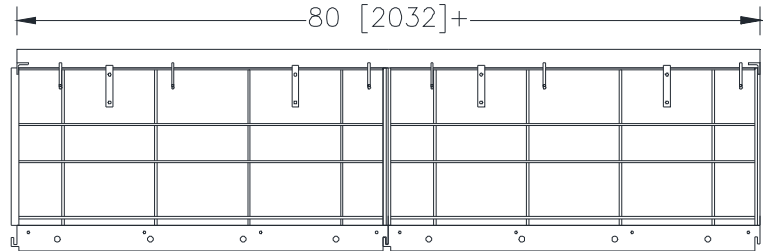
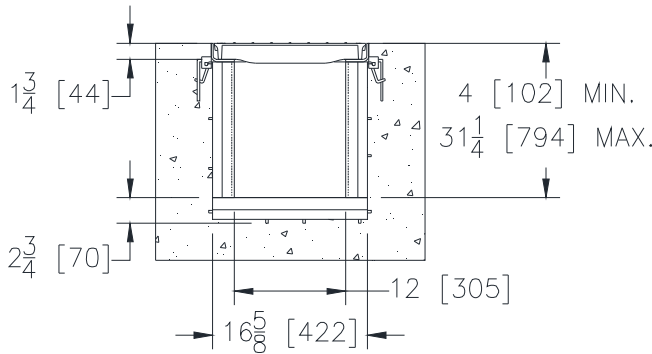
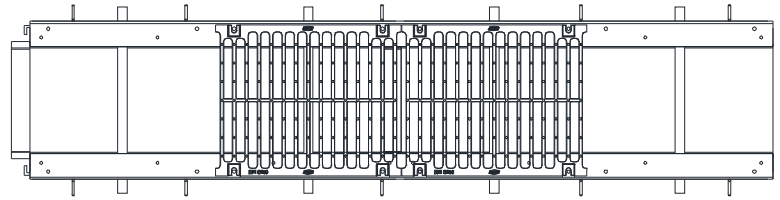
12 [305] WIDE THROAT TRENCH DRAIN SYSTEM W/FLAT BOTTOM

SPECIFICATION SHEET

TAG _____

Dimensional Data (inches and [mm]) are Subject to Manufacturing Tolerances and Change Without Notice

SPECIFYING ENGINEER IS RESPONSIBLE FOR CONCRETE ENCASEMENT AND REINFORCING BASED UPON APPLICATION AND LOCAL CODES



+ Actual High Density Polyethylene channel length is 82 [2083] to allow for overlap, with frame attached the length is 84-1/2 [2146].

ENGINEERING SPECIFICATION: Zurn Z874-12-87

Channels shall be 80" [2032mm] long, 17" [432mm] wide reveal and have a 12" [305mm] wide throat. Modular channel sections shall be made of 0% water absorbent High Density Polyethylene (HDPE). Shall have a positive mechanical connection between channel sections that will not separate during the installation and shall mechanically lock into the concrete surround every 10" [254mm]. Channels shall weigh less than 6.6 lbs. per linear foot [9.8 kg/m], have smooth flat bottom with a Manning's coefficient of .009 and 1.00% or neutral 0% built-in slope. Channels are available with inverts ranging from 4" [102mm] to 31.25" [794mm]. Channel shall have all grates locked down. Frame come with clips attached to the frame to accommodate vertical re-bar for positioning and anchoring purposes. Shall be provided with the standard DGC grate, Zurn 16-1/4" [413mm] wide Ductile Iron Slotted Grate, which locks down to the frame with 4 individual bolt anchors per grate. Ductile Iron conforms to ASTM specification A536, Grade 80-55-06. Ductile Iron grate is rated class C per the DIN EN1433 top load classifications. Supplied in 20" [508 mm] nominal lengths with 13/16" [21mm] wide slots, and 1-3/4" [44mm] bearing depth. Grate has an open area of 118 sq. in. per ft. [249779] sq. mm per meter. The 1/4" [6mm] thick Carbon Steel Frame Assembly conforms to ASTM specification A36 with 10 - 4" [102mm] long concrete anchors per 80" [2032mm]. The frame is supplied with a powder coated finish. All welds must be performed by a certified welder per ASTM standard AWS D1.1. Frames shall be produced in the USA.

PREFIX

___ Z 80 [2032] High Density Polyethylene Channel, Heavy-Duty Frame with Anchor Studs*

SUFFIX OPTIONS (Check/specify appropriate options)

Adapters

___ -E1	Closed End Cap	___ -U4	4 [102] No-Hub Bottom Outlet
___ -E4	4 [102] No-Hub End Outlet	___ -U6	6 [152] No-Hub Bottom Outlet
___ -E6	6 [152] No-Hub End Outlet	___ -U8	8 [203] No-Hub Bottom Outlet
___ -E8	8 [203] No-Hub End Outlet	___ -U12	12 [305] No-Hub Bottom Outlet
___ -E10	10 [254] No-Hub End Outlet		

Grate Options (Load Classifications are per DIN EN1433)

___ -DCC	Ductile Iron Solid Cover - Class C
___ -DCF	Ductile Iron Solid Cover - Class F
___ -DGC	Ductile Iron Slotted Grate - Class C*
___ -DGF	Ductile Iron Slotted Grate - Class F
___ -GDC	Galvanized Ductile Iron Grate - Class C
___ -GDF	Galvanized Ductile Iron Grate - Class F
___ -GG	Fiberglass Grate
___ -GHPD	Galvanized Heel-Proof Longitudinal Ductile Iron Grate - Class C
___ -HPD	Heel-Proof Longitudinal Ductile Iron Grate - Class C
___ -SBG	Stainless Steel Bar Grate - Class C

MADE in the U.S.A. (Load Classifications are per DIN EN1433)

___ -ADA-USA	Meets Americans with Disabilities Act Requirements - Class C
___ -DGC-USA	Ductile Iron Slotted Grate - Class C
___ -DGF-USA	Ductile Iron Slotted Grate-Class F
___ -GADA-USA	Galvanized Ductile ADA Slotted Grate - Class C
___ -GDC-USA	Galvanized Ductile Slotted Grate - Class C
___ -GDF-USA	Galvanized Ductile Slotted Grate - Class F

Miscellaneous Options

___ -RC	Rebar Clips (Set of 2)
___ -VP	Vandal-Proof Lockdown

MADE in the U.S.A. Miscellaneous Options

___ -CBF	Black Acid Resistant Coated Frame
___ -DB	Bottom Dome Strainer
___ -HDS	Type 304 Stainless Steel Top Frame
___ -HDG	Galvanized Frame Assembly

* Regularly furnished unless otherwise specified.