



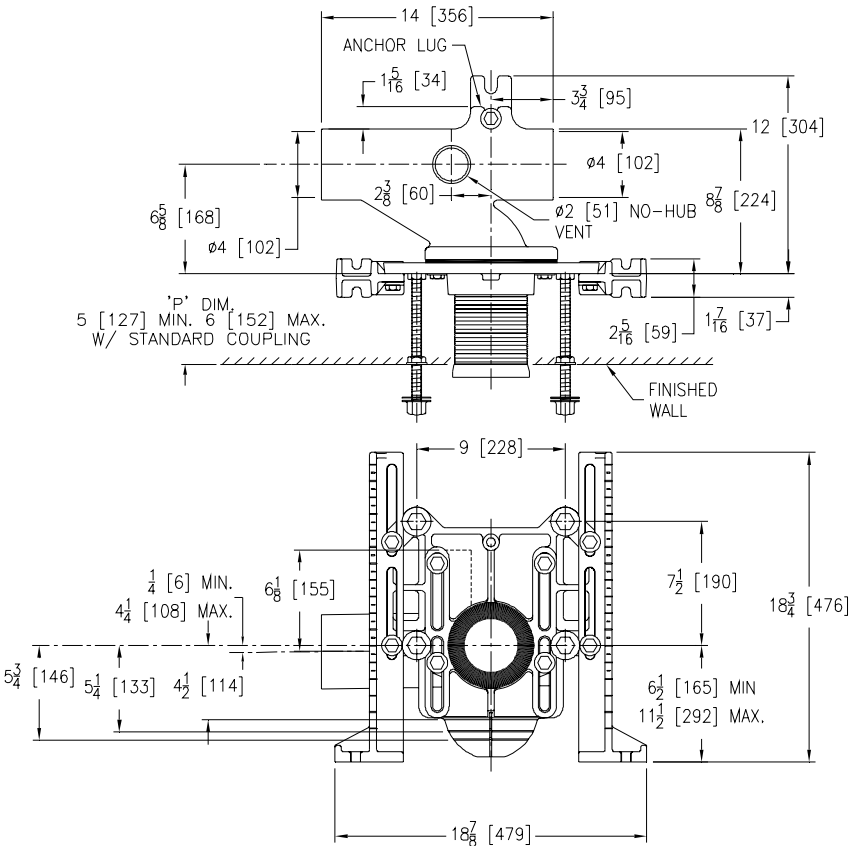
# Z1203-N-XI

## ADJUSTABLE HORIZONTAL SIPHON JET NO-HUB W/ INTEGRAL 2 [51] EXTENSION FEET

SPECIFICATION SHEET

TAG \_\_\_\_\_

Dimensional Data (inches and [ mm ]) are Subject to Manufacturing Tolerances and Change Without Notice



Product Number	Approx. Wt. Lbs. [kg]
Z1203-NL4-XI	70 [32]
Z1203-NR4-XI	70 [32]

**Note:**

1. Min. 'P' Dim. Obtainable=2 [51]
2. Feet bolted to floor using min. 1/2 [13] dia. bolts and back slots on carrier feet.
3. Back anchor foot required for secure installation.

**ENGINEERING SPECIFICATION: ZURN Z1203-N(-)-XI**

Adjustable, horizontal siphon jet water closet "Rigid System" with 4 [102] No-Hub connections. Complete with Dura-Coated cast iron right hand, left hand, or double main fitting, with 2 [51] vent, adjustable gasketed faceplate, integral 2 [51] extension floor mounted foot supports, corrosion resistant adjustable ABS coupling with integral test cap, fixture bolts, trim, and stud protectors. Rear anchor tie down and bonded "Neo-Seal" gasket.

**OPTIONS** (Check/specify appropriate options)

- \_\_\_ Z1203-NR4-XI    4 [102] No-Hub Right Hand Inlet with Flow to Left
- \_\_\_ Z1203-NL4-XI    4 [102] No-Hub Left Hand Inlet with Flow to Right

**PREFIXES**

- \_\_\_ Z    D.C.C.I. System with Zurn "ZZ" Adjustable Coupling\*
- \_\_\_ ZQ    D.C.C.I. System with NPT Faceplate, Non-Adjustable Coupling

**SUFFIXES**

- |   |  |
|---|--|
| <ul style="list-style-type: none"> <li>___ -B    Blowout Type Fixture Support</li> <li>___ -BC    Back Cleanout</li> <li>___ -CC    Corrosion Resistant Cast Iron Coupling (6 - 12 [152 - 305])</li> <li>___ -CL    Coupling Length Greater Than 12 [305] (Specified Length Required)</li> <li>___ -CV    Closed Vent (Use only when local codes allow)</li> <li>___ -G    Galvanized Cast Iron</li> <li>___ -T    Threaded Connection</li> <li>___ -VP    Vandal-Proof Trim</li> <li>___ -X3    3 [76] Foot Extension Assembly</li> <li>___ -X4    4 [102] Foot Extension Assembly</li> <li>___ -29    Mechanical Test Cap Assembly</li> </ul> | <ul style="list-style-type: none"> <li>___ -45    Finishing Frame for Siphon Jet System (for Blow Out System specify -45-B)</li> <li>___ -50    Flush Valve Supply Support for Water Closets</li> <li>___ -61    "ZZ" Coupling Wrench</li> </ul> |
|---|--|

\*REGULARLY FURNISHED UNLESS OTHERWISE SPECIFIED

REV. A	DATE: 2/24/11	C.N. NO. 120932
DWG. NO. 83141	PRODUCT NO. Z1203-N-XI	