



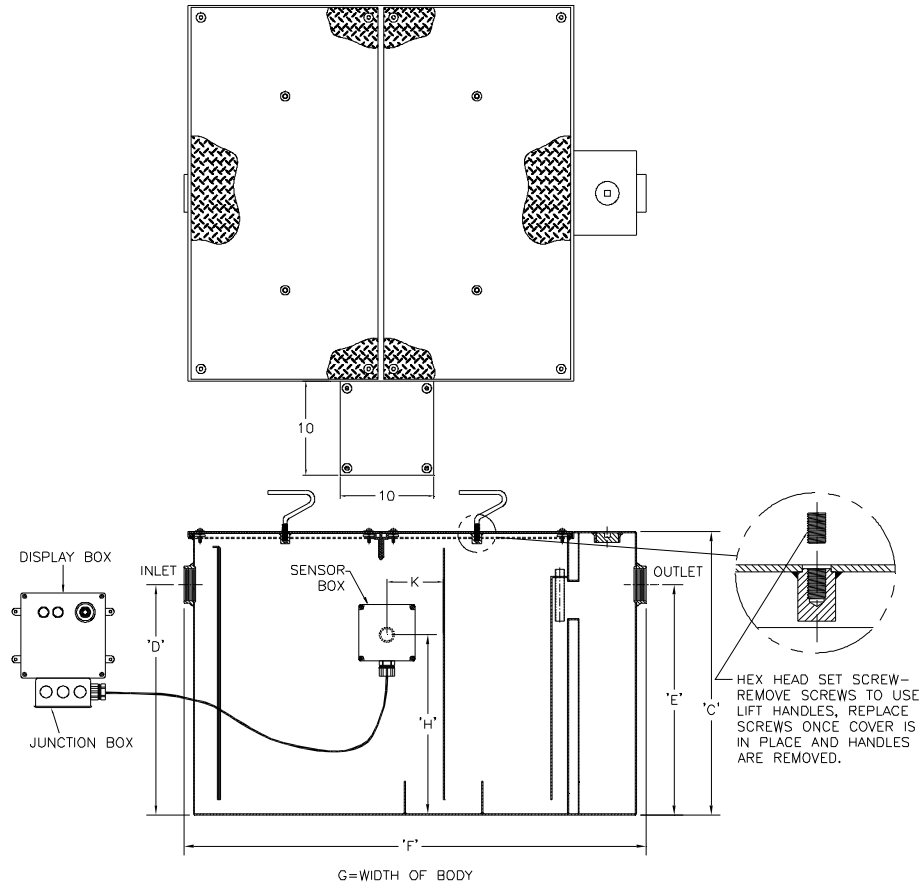
# Z1172-UN-75

## LARGE CAPACITY GREASE INTERCEPTOR WITH USER NOTIFICATION SYSTEM AND SIDE SENSOR ENCLOSURE

SPECIFICATION SHEET

TAG \_\_\_\_\_

Dimensional Data (inches and [ mm ]) are Subject to Manufacturing Tolerances and Change Without Notice



Size	Inlet/ Outlet Size	Flow Rate G.P.M. [L]	Capacity		Covers	Approx. Wt. Lbs. [kg]	Dimensions in Inches [mm]					
			Water Gal. [L]	Grease Lbs. [kg]			C	D/E	F	G	H	K
1300	4 [102]	200 [756]	270 [1021]	400 [182]	3	1220 [553]	35 1/2 [902]	29 7/8 [759]	61 [1549]	43 5/8 [1108]	21 7/8 [556]	6 [152]

**ENGINEERING SPECIFICATION: ZURN Z1172-UN-75**

Large capacity Acid Resistant Coated interior and exterior fabricated steel grease interceptor with side sensor enclosure, internal air relief by-pass, bronze cleanout plug and visible double wall trap seal with removable pressure equalizing/flow diffusing baffle. Gasketed non-skid secured covers with removable lift handles, complete with flow control fitting. Includes encased fiberglass sensor box containing an electronic grease level sensor (specify right or left side)\*, a fiberglass display box with one green power light, one red grease level lights, audio alarm and junction box. Regularly furnished with inlet and outlet in high position.

**OPTIONS** (Check/specify appropriate options)

**PREFIXES**

- \_\_\_ Z Acid Resistant Coated Fabricated Steel\*
- \_\_\_ ZS All Type 304 Fabricated Stainless Steel

**SUFFIXES**

- \_\_\_ -AL Aluminum Cover
- \_\_\_ -L Angle type (Z1108-L) flow control device.

**Note:**

- \*1. Sensor box is mounted on the left or right hand side of the unit when facing inlet (must be specified).
2. Power supply 120V GFCI.
3. User must drill holes for sensor box to junction box line and seal per local code requirements
4. Location of inlet from bottom of interceptor cannot be changed.

REV.	DATE: 07/16/08	C.N. NO. 98807
DWG. NO. P-15568	PRODUCT NO. Z1172-UN-75	

\*REGULARLY FURNISHED UNLESS OTHERWISE SPECIFIED