

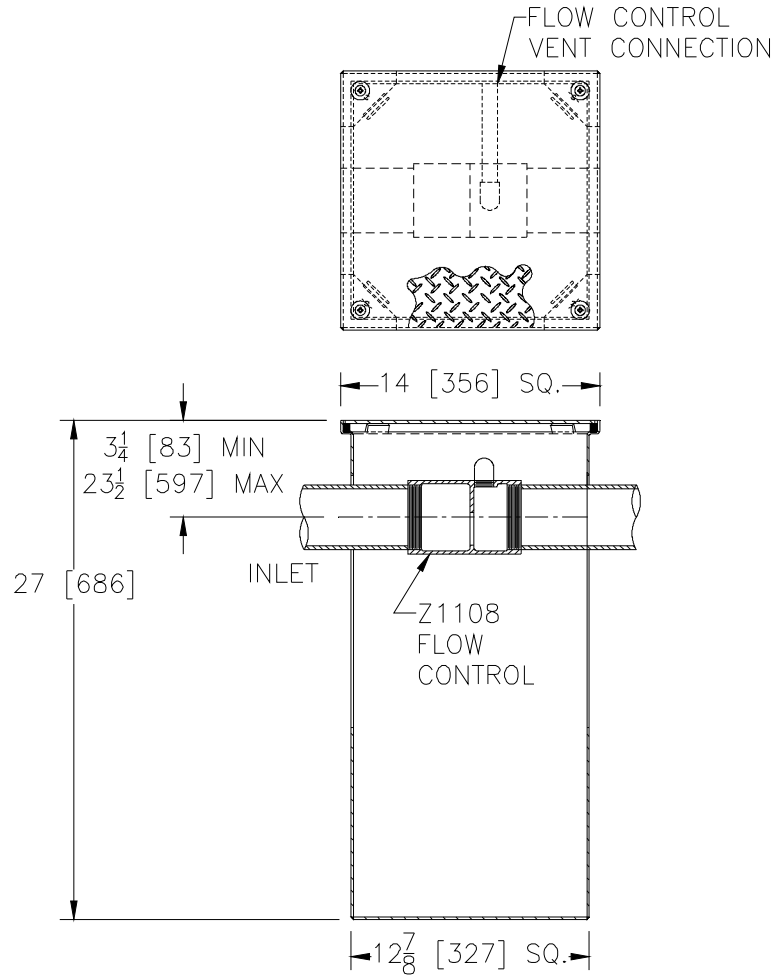


Z1108-83
GREASE INTERCEPTOR FLOW CONTROL
ACCESS BOX

SPECIFICATION SHEET

TAG _____

Dimensional Data (inches and [mm]) are Subject to Manufacturing Tolerances and Change Without Notice



Inlet/ Outlet Size	Approx. Wt. Lbs. [kg]
3[76]	75[34]

ENGINEERING SPECIFICATION: ZURN Z1108-83

Acid Resistant Coated interior and exterior fabricated steel access box with slotted openings for use with recessed Z1170 grease interceptor, complete with gasketed non-skid secured cover.

PREFIXES

___ Z Acid Resistant Coated Fabricated Steel*

SUFFIXES

- ___ -E Acid Resistant Coated Interior and exterior fabricated steel integral extension section. (Specify 'C' Dim. required) for recessed installation.
- ___ -K Anchor flange 1-3/4 [44] down from top and 2 [51] wide.
- ___ -KC Anchor flange 1-3/4 [44] down from top and 2 [51] wide with clamp collar.

* Regularly furnished unless otherwise specified.