



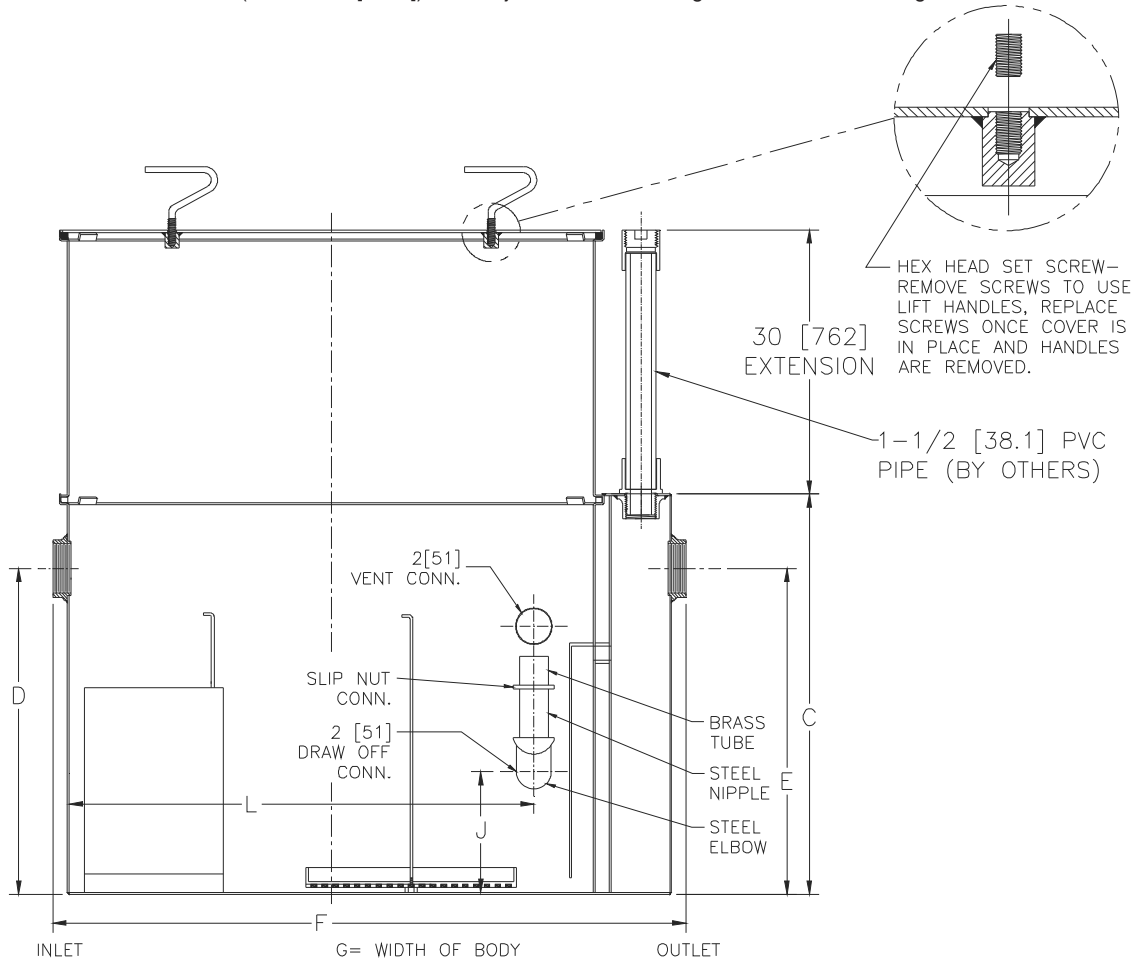
Z1188-173

LARGE CAPACITY OIL INTERCEPTOR W/RETROFIT EXTENSION

SPECIFICATION SHEET

TAG _____

Dimensional Data (inches and [mm]) are Subject to Manufacturing Tolerances and Change Without Notice



Flow Rate GPM [LPM]	Inlet/ Outlet Size	Water Capacity Gal. [L]	App. Wt. Lbs. [Kg]	No. of Covers	Dimensions In Inches [mm]					
					C	D/E	F	G	J	L
200 [757]	4 [102]	265 [1003]	1055 [478]	2	35-1/2 [901]	29-7/8 [759]	61 [1549]	43-5/8 [1108]	17-3/4 [451]	46-5/8 [1184]

ENGINEERING SPECIFICATION: ZURN Z1188-173

Large capacity Acid Resistant Coated interior and exterior fabricated steel oil interceptor, with bronze cleanout plug and visible double wall trap seal, removable combination pressure equalizing/flow diffusing baffle and sediment bucket, horizontal baffle, adjustable oil drawoff and vent connections either side. Complete with secured, gasketed, non-skid cover with removable lift handles and flow control fitting. Regularly furnished with inlet and outlet in high position with retro fit extension

OPTIONS (Check/specify appropriate options)

PREFIXES

___Z Acid Resistant Coated Fabricated Steel*

SUFFIXES

- ___-HD Heavy-duty traffic cover rated at 10,000 lbs [4536 kg.] maximum load. An increased 'C' dim. is required when -HD option is specified. (See -HD option specification sheet)
- ___-K Anchor flange 1-3/4 [44] down from top and 2 [51] wide. A 3 [76] minimum extension height is required when -K option is specified.
- ___-KC Anchor flange 1-3/4 [44] down from top and 2 [51] wide with clamp collar. A 3 [76] minimum extension height is required when -KC option is specified.
- ___-PW Plug wrench

* Regularly furnished unless otherwise specified.