



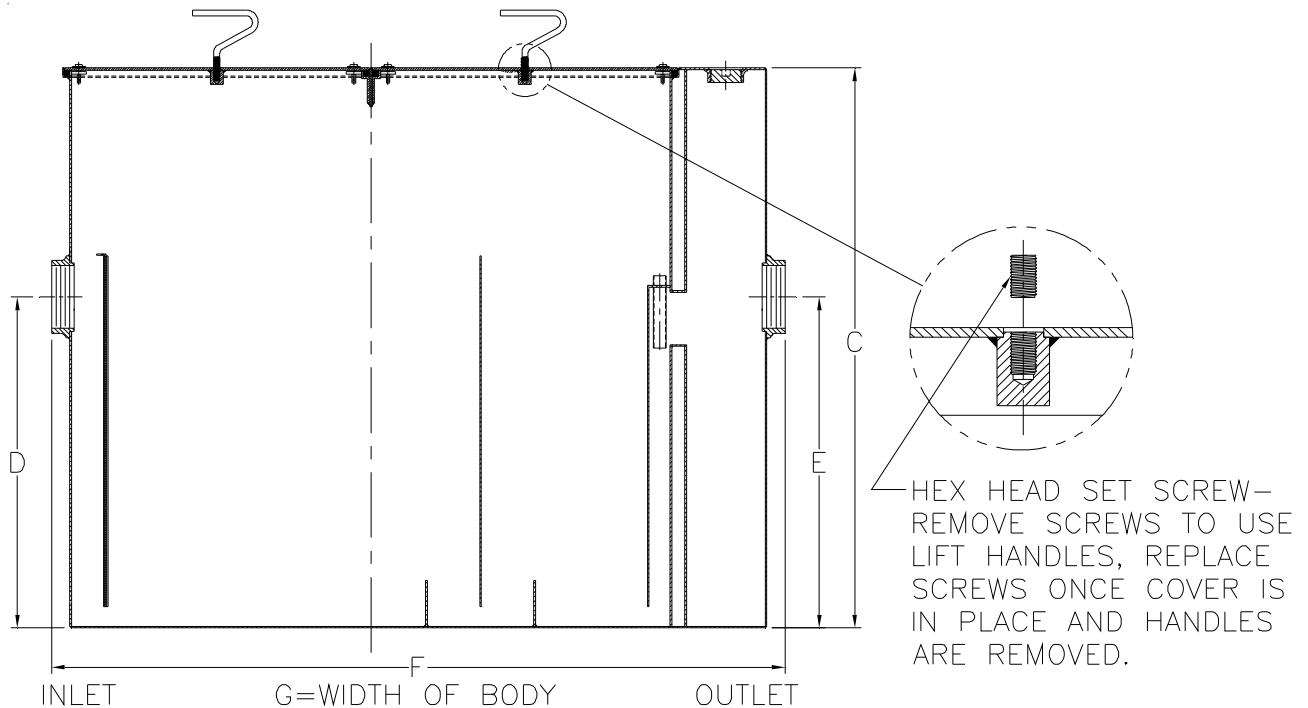
# Z1172-102

## 42 3/4 [1086] HIGH LARGE CAPACITY GREASE INTERCEPTOR

SPECIFICATION SHEET

TAG \_\_\_\_\_

Dimensional Data (inches and [ mm ]) are Subject to Manufacturing Tolerances and Change Without Notice



Size	Inlet/ Outlet Size**	Flow Rate G.P.M. [L]	Capacity		No. of Covers	Approx. Wt. Lbs. [kg]	Dimensions in Inches			
			Water Gal. [L]	Grease Lbs. [kg]			C	D/E	F	G
1200	6 [152]	150 [568]	195 [738]	375 [170]	2	856 [388]	42 3/4 [1086]	25 1/4 [641]	56 [1422]	41 5/8 [1057]

**ENGINEERING SPECIFICATION: ZURN Z1172-102**

Large capacity Acid Resistant Coated interior and exterior fabricated steel grease interceptor, rated at \_\_\_\_ GPM and \_\_\_\_ Lbs. grease capacity, with internal air relief by-pass, bronze cleanout plug and visible double wall trap seal with removable pressure equalizing/flow diffusing baffle and sediment tray. Gasketed non-skid secured H20 rated cover with removable lift handles and enzyme port having bronze plug, complete with flow control fitting. Regularly furnished with inlet and outlet in high position.

**OPTIONS** (Check/specify appropriate options)

**PREFIXES**

\_\_\_ Z Acid Resistant Coated Fabricated Steel\*

**SUFFIXES**

- \_\_\_ -E Acid Resistant Coated Interior and exterior fabricated steel extension section. (Specify 'C' Dim. required) for recessed installation.
- \_\_\_ -K Anchor flange 1 3/4 [44] down from top and 2 [51] wide.
- \_\_\_ -KC Anchor flange 1 3/4 [44] down from top and 2 [51] wide with clamp collar.
- \_\_\_ -L Angle type (Z1108-L) flow control device.

<b>REV. C</b>	<b>DATE: 07/27/07</b>	<b>C.N. NO. 97004</b>
<b>DWG. NO. P-14322</b>	<b>PRODUCT NO. Z1172-102</b>	

\*REGULARLY FURNISHED UNLESS OTHERWISE SPECIFIED