



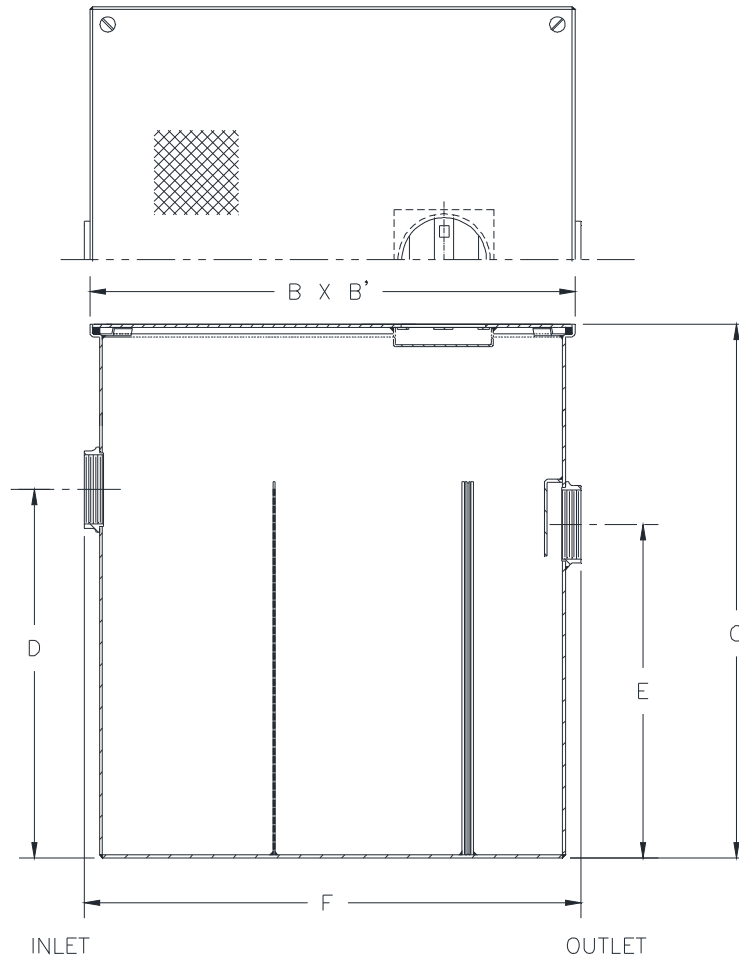
# Z1185-150

## LINT INTERCEPTOR WITH INTEGRAL EXTENSION & HIGH INLET/OUTLET

SPECIFICATION SHEET

TAG \_\_\_\_\_

Dimensional Data (inches and [ mm ]) are Subject to Manufacturing Tolerances and Change Without Notice



Size No. of Machines	Inlet/Outlet Size**	Flow Rate G.P.M. [L]	Approx. Wt. Lbs. [kg]	Dimensions In Inches [mm]					
				B	B'	C	D	E	F
20	4 [102]	200 [756]	554 [251]	40 [1016]	40 [1016]	48-5/8 [1235]	32-1/4 [819]	32 [813]	41 [1041]

### ENGINEERING SPECIFICATION: ZURN Z1185-150

Acid Resistant Coated interior and exterior fabricated steel lint interceptor, non-skid secured cover, integral extension with stainless lint intercepting secondary screen assembly and permanent primary straining baffle. Regularly furnished with high inlet and outlet.

### OPTIONS (Check/specify appropriate options)

#### PREFIXES

\_\_\_ Z Acid Resistant Coated Fabricated Steel\*

#### SUFFIXES

\_\_\_ -RS Stainless Steel Screen Replacement Assembly

\* Regularly furnished unless otherwise specified.